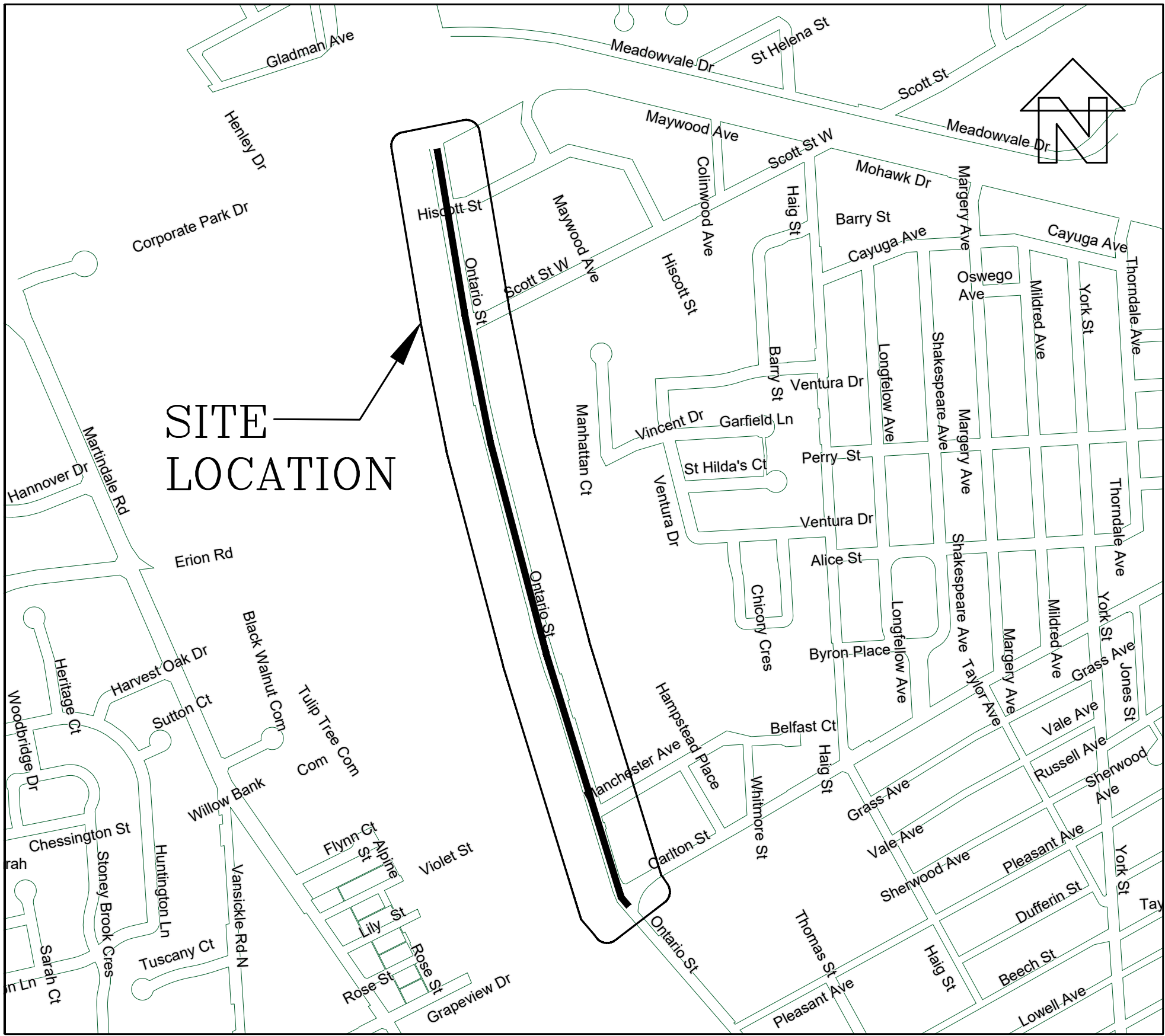




CITY OF ST. CATHARINES

ONTARIO STREET (RR#42) UNDERGROUND IMPROVEMENTS PROJECT NUMBER P21-003



KEY PLAN

LIST OF DRAWINGS

	TITLE PAGE
72-3524-A	Ontario Street (RR#42) Underground Improvements, Station 0+00 to 1+40
72-3524-1	Ontario Street (RR#42) Underground Improvements, Station 1+40 to 2+80
72-3524-2	Ontario Street (RR#42) Underground Improvements, Station 2+80 to 4+20
72-3524-3	Ontario Street (RR#42) Underground Improvements, Station 4+20 to 5+60
72-3524-4	Ontario Street (RR#42) Underground Improvements, Station 5+60 to 7+00
72-3524-5	Ontario Street (RR#42) Underground Improvements, Station 7+00 to 8+40
72-3524-6	Ontario Street (RR#42) Underground Improvements, Station 8+40 to 9+80
72-3524-7	Ontario Street (RR#42) Underground Improvements, Station 9+80 to 11+20
72-3524-8	Ontario Street (RR#42) Underground Improvements, Station 11+20 to 12+60
72-3524-9	Ontario Street (RR#42) Underground Improvements, Station 12+60 to 12+85
72-3524-10	

ANTHONY MARTUCCIO, P.ENG.
DIRECTOR OF ENGINEERING, FACILITIES
AND ENVIRONMENTAL SERVICES

MAT SISCOE
MAYOR

No.	STA.	TYPE	GRATE ELEV.	INV. ELEV.			
180	0+28	CB	98.66m	NO DATA			
145	0+28	CB	98.35m	NO DATA			
295	0+45	CB	98.28m	NO DATA			
349	1+04	CB	98.14m	E INV. 96.554m			
416	1+04	CB	98.12m	E INV. 96.597m	S INV. 97.007m	W INV. 96.547m	

- GENERAL NOTES:
- CONTRACTOR TO CONFIRM DEPTH, SIZE AND MATERIAL OF EX. WATERMAIN PRIOR TO CONSTRUCTION (TYP. ALL CONNECTIONS)
 - CONTRACTOR TO CONFIRM LOCATION, DEPTH, SIZE AND MATERIAL OF ALL WATER SERVICES PRIOR TO INSTALLATION OF PROP. WATER SERVICES
 - CONTRACTOR TO MAINTAIN 2.5m HORIZONTAL OR A 0.5m SEPARATION BETWEEN WATERMAIN / LARGE SERVICES AND SEWERS, PER CITY STANDARD DRAWING No. 110-4004, OR DEFLECT PROPOSED WATERMAIN AS REQUIRED TO SUIT.
 - ALL WATERMAIN AND SEWER SEPARATIONS FOR PARALLEL AND CROSSING INSTALLATIONS TO FOLLOW MOE-F-6-1 PROCEDURES.
 - WATERMAIN BRANCH OR HYDRANT LEAD TO CROSS UNDER EXISTING WATERMAIN USING 45 DEGREE BENDS PER CITY STANDARD DRAWING No. 110-4004
 - ALL WATERMAINS AND LARGE SERVICES TO BE PVC CLASS DR 18 PIPE.
 - WATER SERVICE TO BE REPLACED FROM PROP. WATERMAIN TO PROPERTY LINE OR NEW MAIN STOP, CURB STOP AND CURB BOX.
 - EXIST. CURB BOXES TO BE REMOVED AND DISPOSED OF OFFSITE.
 - PARTIAL UNDERGROUND SERVICES SHOWN ON THIS DRAWING ARE FOR INFORMATION PURPOSES ONLY. OTHER BURIED UTILITIES MAY EXIST WHICH ARE NOT SHOWN BECAUSE OF INSUFFICIENT INFORMATION. THE CONTRACTOR SHALL CONFIRM EXACT LOCATION AND DEPTH OF ALL SERVICES WITHIN THE PROJECT SITE LIMITS.
 - CONTRACTOR TO REFER TO GEOTECHNICAL INVESTIGATION REPORT IN CONTRACT DOCUMENTS

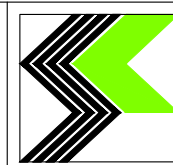
EX CL. ELEV	98.65	98.61	98.60	98.56	98.52	98.50	98.47	98.44	98.41	98.37	98.35	98.33	98.30
SAN SEWER ELEV													
STM SEWER ELEV													

NOTES

- THE POSITION OF THE POLE LINES, CONDUITS, WATERMAIN, SEWER AND OTHER UNDERGROUND AND ABOVE-GROUND UTILITIES AND STRUCTURES IS NOT NECESSARILY SHOWN ON THE CONSTRUCTION DRAWINGS AND WHERE SHOWN, THE ACCURACY OF THE POSITION OF SUCH UTILITIES AND STRUCTURES IS NOT GUARANTEED.
- BEFORE STARTING WORK, THE CONTRACTOR SHALL INFORM HIMSELF OF THE EXACT LOCATION OF SUCH UTILITIES AND STRUCTURES AND SHALL ASSUME ALL LIABILITY FOR DAMAGE TO THEM.

- HYDRO AND BELL POLES ARE TO BE SUPPORTED AS PER THE RESPECTIVE UTILITY REQUIREMENTS.
- ALL MANHOLE FRAMES, CATCH BASIN FRAMES, WATER VALVES AND GAS VALVES TO BE ADJUSTED TO FINISH GRADE.
- ALL PIPE SIZES ARE IN MILLIMETRES UNLESS OTHERWISE NOTED.
- ALL DIMENSIONS ARE IN METRES UNLESS OTHERWISE NOTED.
- BEFORE STARTING WORK, THE CONTRACTOR SHALL INFORM HIMSELF OF THE EXACT LOCATION OF SUCH UTILITIES AND STRUCTURES AND SHALL ASSUME ALL LIABILITY FOR DAMAGE TO THEM.

BASE PLAN	VB/JB
DESIGN	J.A.S.
CHECKED BY	F.K.



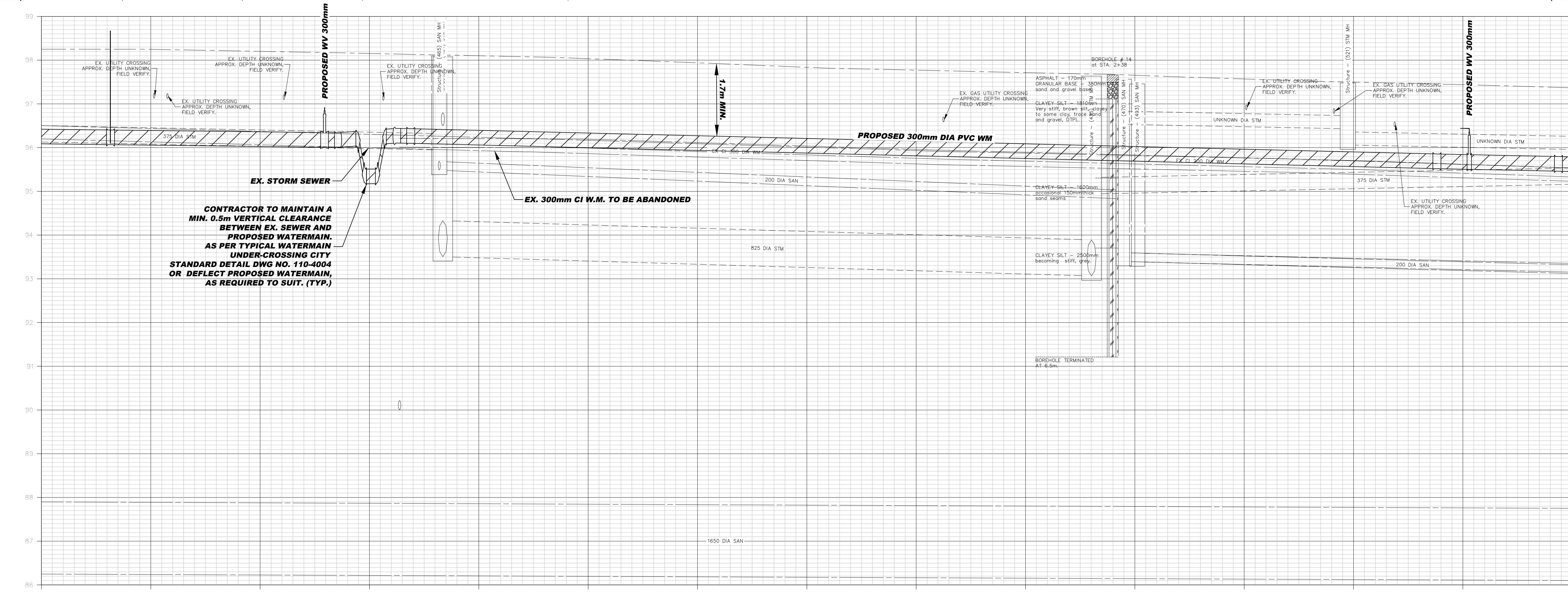
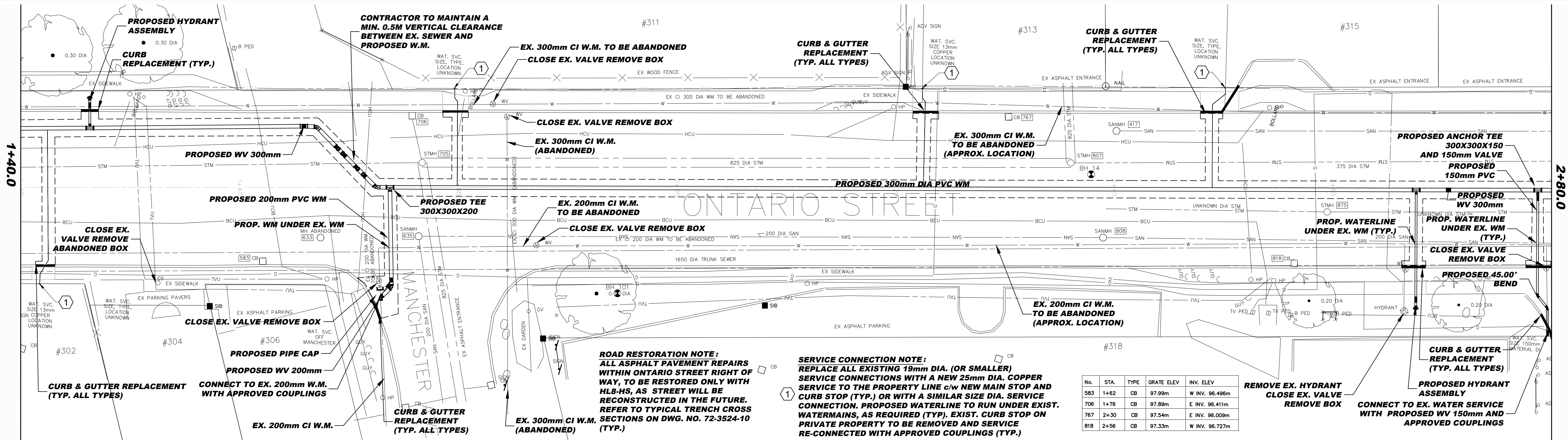
ST. CATHARINES
ENGINEERING, FACILITIES, AND
ENVIRONMENTAL SERVICES

ONTARIO STREET (RR#42)

Project Number P21-003
Ontario Street (RR#42)
Underground Improvements
Station 0+00 to 1+40

FIELD NOTES	100-
DATE	JAN. 2024
SCALE	H. 1:200 V. 1:50
DWG.No.	1
MUN.REF No.	72-3524-1
REV.	E

- GENERAL NOTES:
- CONTRACTOR TO CONFIRM DEPTH, SIZE AND MATERIAL OF EX. WATERMAIN PRIOR TO EX. CONSTRUCTION (TYP. ALL CONNECTIONS)
 - CONTRACTOR TO CONFIRM LOCATION, DEPTH, SIZE AND MATERIAL OF ALL WATER SERVICES PRIOR TO INSTALLATION OF PROP. WATER SERVICES
 - CONTRACTOR TO MAINTAIN 2.5m HORIZONTAL OR A 0.5m SEPARATION BETWEEN WATERMAIN (LARGE SERVICES AND SEWERS, PER CITY STANDARD DRAWING No. 110-4004, OR DEFLECT PROPOSED WATERMAIN AS REQUIRED TO SUIT.
 - ALL WATERMAIN AND SEWER SEPARATIONS FOR PARALLEL AND CROSSING INSTALLATIONS TO FOLLOW MCE-F-6-1 PROCEDURES.
 - WATERMAIN BRANCH OR HYDRANT LEAD TO CROSS UNDER EXISTING WATERMAIN USING 45 DEGREE BENDS PER CITY STANDARD DRAWING No. 110-4004
 - ALL WATERMANS AND LARGE SERVICES TO BE PVC CLASS DR 18 PIPE.
 - WATER SERVICE TO BE REPLACED FROM PROP. WATERMAIN TO PROPERTY LINE c/w NEW MAIN STOP, CURB STOP AND CURB BOX.
 - EXIST. CURB BOXES TO BE REMOVED AND DISPOSED OF OFFSITE.
 - PARTIAL UNDERGROUND SERVICES SHOWN ON THIS DRAWING ARE FOR INFORMATION PURPOSES ONLY. OTHER BURIED UTILITIES MAY EXIST WHICH ARE NOT SHOWN BECAUSE OF INSUFFICIENT INFORMATION. THE CONTRACTOR SHALL CONFIRM EXACT LOCATION AND DEPTH OF ALL SERVICES WITHIN THE PROJECT SITE LIMITS.
 - CONTRACTOR TO REFER TO GEOTECHNICAL INVESTIGATION REPORT IN CONTRACT DOCUMENTS



E	ISSUED FOR TENDER	FEB. 2024	JAS
D	ISSUED FOR DESIGN REVIEW	DEC. 2023	JAS
C	ISSUED FOR PRELIMINARY DESIGN REVIEW	JUN. 2023	JAS
B	REVISED BASE PLAN	FEB. 2023	JB
A	BASE PLAN	DEC. 2022	VB
NO.	REVISION	DATE	INIT.

NOTES

- THE POSITION OF THE POLE LINES, CONDUITS, WATERMAIN, SEWER AND OTHER UNDERGROUND AND ABOVE-GROUND UTILITIES AND STRUCTURES IS NOT NECESSARILY SHOWN ON THE CONSTRUCTION DRAWINGS AND WHERE SHOWN, THE ACCURACY OF THE POSITION OF SUCH UTILITIES AND STRUCTURES IS NOT GUARANTEED.
- BEFORE STARTING WORK, THE CONTRACTOR SHALL INFORM HIMSELF OF THE EXACT LOCATION OF SUCH UTILITIES AND STRUCTURES AND SHALL ASSUME ALL LIABILITY FOR DAMAGE TO THEM.

- HYDRO AND BELL POLES ARE TO BE SUPPORTED AS PER THE RESPECTIVE UTILITY REQUIREMENTS.
- ALL MANHOLE FRAMES, CATCH BASIN FRAMES, WATER VALVES AND GAS VALVES TO BE ADJUSTED TO FINISH GRADE.
- ALL PIPE SIZES ARE IN MILLIMETRES UNLESS OTHERWISE NOTED.
- ALL DIMENSIONS ARE IN METRES UNLESS OTHERWISE NOTED.
- HIGH PRIORITY FIBRE OPTIC BELL AND COGECO CABLES ARE PRESENT - USE EXTREME CAUTION.

BASE PLAN
VB/JB

DESIGN
J.A.S.

CHECKED BY
F.K.

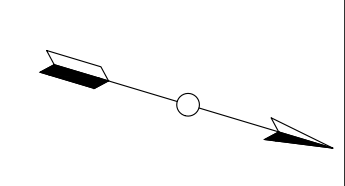
 **ST. CATHARINES**
ENGINEERING, FACILITIES, AND
ENVIRONMENTAL SERVICES

ONTARIO STREET (RR#42)

Project Number P21-003
Ontario Street (RR#42)
Underground Improvements
Station 1+40 to 2+80

FIELD NOTES	100-
DATE	JAN. 2024
SCALE	H. 1:200 V. 1:50
DWG.No.	2
MUN.REF No.	72-3524-2
REV.	E

1. CONTRACTOR TO CONFIRM DEPTH, SIZE AND MATERIAL OF EX. WATERMAIN PRIOR TO CONSTRUCTION (TYP. ALL CONNECTIONS)
2. CONTRACTOR TO CONFIRM LOCATION, DEPTH, SIZE AND MATERIAL. OF ALL WATER SERVICES PRIOR TO INSTALLATION OF PROPOSED WATER SERVICES
3. CONTRACTOR TO MAINTAIN 2.5m HORIZONTAL OR 0.5m SEPARATION BETWEEN WATERMAIN / LARGE SERVICES AND SEWERS, AND 1.0m BETWEEN ALL OTHERS. 110-400d, OR DEFLECT PROPOSED WATERMAIN AS REQUIRED TO SUIT.
4. ALL WATERMAIN AND SEWER SEPARATIONS FOR PARALLEL AND PERPENDICULAR INSTALLATIONS FOLLOW MOE-F-6-1 PROCEDURES.
5. WATERMAIN BRANCH OR HYDRANT LEAD TO CROSS UNDER EXISTING WATERMAIN USING 45 DEGREE BENDS PER CITY STANDARD DRAWING NO. 110-400d
6. ALL WATERMAINS AND LARGE SERVICES TO BE PVC CLASS 18 PIPE.
7. WATER SERVICE TO BE REPLACED FROM PROP. WATERMAIN TO PROPERTY LINE c/w NEW MAIN STOP, CURB STOP AND CURB BOX.
8. EXIST. CURB BOXES TO BE REMOVED AND DISPOSED OF OFFSITE.
9. PARTIAL UNDERGROUND SERVICES SHOWN ON THIS DRAWINGS ARE FOR INFORMATION PURPOSES ONLY. OTHER BURIED UTILITIES MAY EXIST WHICH ARE NOT SHOWN BECAUSE OF INSUFFICIENT INFORMATION. CONTRACTOR SHALL CONFIRM EXACT LOCATION AND DEPTH OF ALL SERVICES WITHIN THE PROJECT SITE LIMITS.
10. CONTRACTOR TO REFER TO THE TECHNICAL INVESTIGATION REPORT IN CONTRACT DOCUMENTS



No.	STA.	TYPE	GRATE ELEV	INV. ELEV
934	2+89	CB	97.10m	W INV. 96.417m
999	2+87	CB	97.11m	E INV. 95.538m
1069	3+53	CB	96.63m	E INV. 94.986m
1225	3+54	CB	96.61m	W INV. 95.797m
1087	+1+13	CB	96.39m	E INV. 94.813m
1413	+1+12	CB	96.39m	W INV. 95.565m
1442	+4+08	CB	96.51m	NW INV. 95.627m

E	ISSUED FOR TENDER	FEB. 2024	JAS
D	ISSUED FOR DESIGN REVIEW	DEC. 2023	JAS
C	ISSUED FOR PRELIMINARY DESIGN REVIEW	JUN. 2023	JAS
B	REVISED BASE PLAN	FEB. 2023	JB
A	BASE PLAN	DEC. 2022	VB
NO.	REVISION	DATE	INT.

1. THE POSITION OF THE POLE LINES, CONDUITS, WATERMAIN, SEWER AND OTHER UNDERGROUND AND ABOVE-GROUND UTILITIES AND STRUCTURES IS NOT NECESSARILY SHOWN ON THE CONSTRUCTION DRAWINGS AND WHERE SHOWN, THE ACCURACY OF THE POSITION OF SUCH UTILITIES AND STRUCTURES IS NOT GUARANTEED.
2. BEFORE STARTING WORK, THE CONTRACTOR SHALL INFORM HIMSELF OF THE EXACT LOCATION OF SUCH UTILITIES AND STRUCTURES AND SHALL ASSUME ALL LIABILITY FOR DAMAGE TO THEM.

3. HYDRO AND BELL POLES ARE TO BE SUPPORTED AS PER THE RESPECTIVE UTILITY REQUIREMENTS.
4. ALL MANHOLE FRAMES, CAST IRON BASH FRAMES, WATER VALVES AND GAS VALVES TO BE ADJUSTED TO FINISH GRADE.
5. ALL PIPE SIZES ARE IN MILLIMETRES UNLESS OTHERWISE NOTED.
6. ALL DIMENSIONS ARE IN METRES UNLESS OTHERWISE NOTED.
7. HIGH PRIORITY FIBRE OPTIC BELL AND COGECO CABLES ARE PRESENT – USE EXTREME CAUTION.

BASE PLAN	VB/JB
DESIGN	J.A.S.
CHECKED BY	E.K.

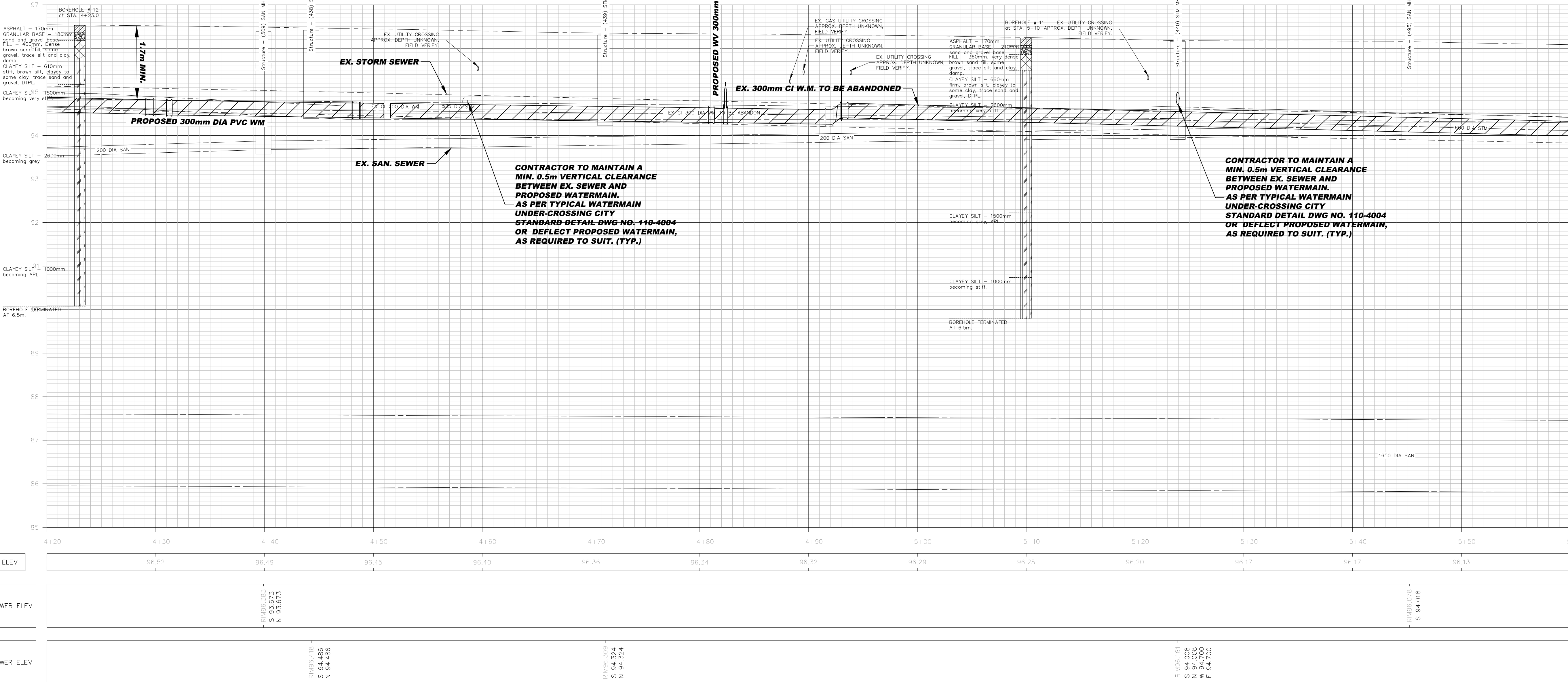
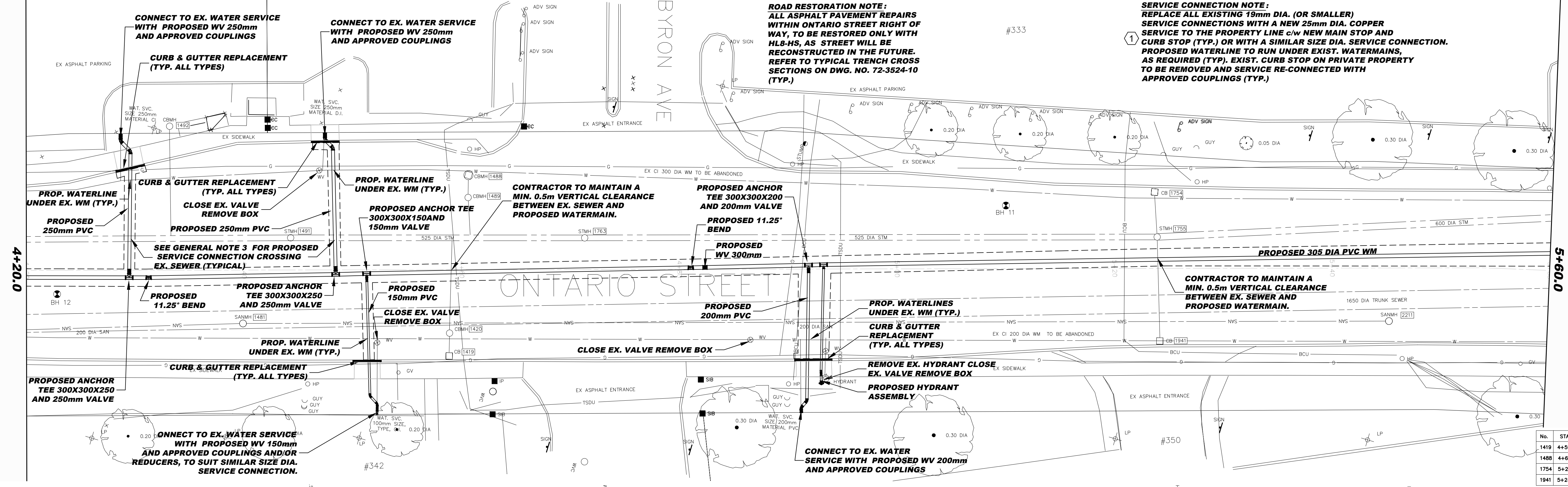


**Project Number P21-003
Ontario Street (RR#42)
Underground Improvements
Station 2+80 to 4+20**

FIELD NOTES	100—
DATE	JAN. 2024
SCALE	H. 1:200 V. 1:50
DWG.No.	3
MUN.REF.No.	72-3524 -3
	REV. E

GENERAL NOTES:

- CONTRACTOR TO CONFIRM DEPTH, SIZE AND MATERIAL OF EX. WATERMAIN PRIOR TO CONSTRUCTION (TYP. ALL CONNECTIONS)
- CONTRACTOR TO CONFIRM LOCATION, DEPTH, SIZE AND MATERIAL OF ALL WATER SERVICES PRIOR TO INSTALLATION OF PROP. WATER SERVICES
- CONTRACTOR TO MAINTAIN 2.5m HORIZONTAL OR A 0.5m SEPARATION BETWEEN WATERMAIN / LARGE SERVICES AND SEWERS, PER CITY STANDARD DRAWING No. 110-4004, OR DEFLECT PROPOSED WATERMAIN AS REQUIRED TO SUIT.
- ALL WATERMAIN AND SEWER SEPARATIONS FOR PARALLEL AND CROSSING INSTALLATIONS TO FOLLOW MCE-F-6-1 PROCEDURES.
- WATERMAIN BRANCH OR HYDRANT LEAD TO CROSS UNDER EXISTING WATERMAIN USING 45 DEGREE BENDS PER CITY STANDARD DRAWING No. 110-4004
- ALL WATERMAINS AND LARGE SERVICES TO BE PVC CLASS DR 18 PIPE.
- WATER SERVICE TO BE REPLACED FROM PROP. WATERMAIN TO PROPERTY LINE c/w NEW MAIN STOP, CURB STOP AND CURB BOX.
- EXIST. CURB BOXES TO BE REMOVED AND DISPOSED OF OFFSITE.
- PARTIAL UNDERGROUND SERVICES SHOWN ON THIS DRAWING ARE FOR INFORMATION PURPOSES ONLY. OTHER BURIED UTILITIES MAY EXIST WHICH ARE NOT SHOWN BECAUSE OF INSUFFICIENT INFORMATION. THE CONTRACTOR SHALL CONFIRM EXACT LOCATION AND DEPTH OF ALL SERVICES WITHIN THE PROJECT SITE LIMITS.
- CONTRACTOR TO REFER TO GEOTECHNICAL INVESTIGATION REPORT IN CONTRACT DOCUMENTS



NO.	REVISION	DATE	INIT.
E	ISSUED FOR TENDER	FEB. 2024	JAS
D	ISSUED FOR DESIGN REVIEW	DEC. 2023	JAS
C	ISSUED FOR PRELIMINARY DESIGN REVIEW	JUN. 2023	JAS
B	REVISED BASE PLAN	FEB. 2023	JB
A	BASE PLAN	DEC. 2022	VB

NO.	REVISION	DATE	INIT.
1	THE POSITION OF THE POLE LINES, CONDUITS, WATERMAIN, SEWER AND OTHER UNDERGROUND AND ABOVE-GROUND UTILITIES AND STRUCTURES IS NOT NECESSARILY SHOWN ON THE CONSTRUCTION DRAWINGS AND WHERE SHOWN, THE ACCURACY OF THE POSITION OF SUCH UTILITIES AND STRUCTURES IS NOT GUARANTEED.		
2	BEFORE STARTING WORK, THE CONTRACTOR SHALL INFORM HIMSELF OF THE EXACT LOCATION OF SUCH UTILITIES AND STRUCTURES AND SHALL ASSUME ALL LIABILITY FOR DAMAGE TO THEM.		

3. HYDRO AND BELL POLES ARE TO BE SUPPORTED AS PER THE RESPECTIVE UTILITY REQUIREMENTS.	
4. ALL MANHOLE FRAMES, CATCH BASIN FRAMES, WATER VALVES AND GAS VALVES TO BE ADJUSTED TO FINISH GRADE.	
5. ALL PIPE SIZES ARE IN MILLIMETRES UNLESS OTHERWISE NOTED.	
6. ALL DIMENSIONS ARE IN METRES UNLESS OTHERWISE NOTED.	
7. HIGH PRIORITY FIBRE OPTIC BELL AND COGECO CABLES ARE PRESENT - USE EXTREME CAUTION.	

BASE PLAN	VB/JB
DESIGN	J.A.S.
CHECKED BY	F.K.

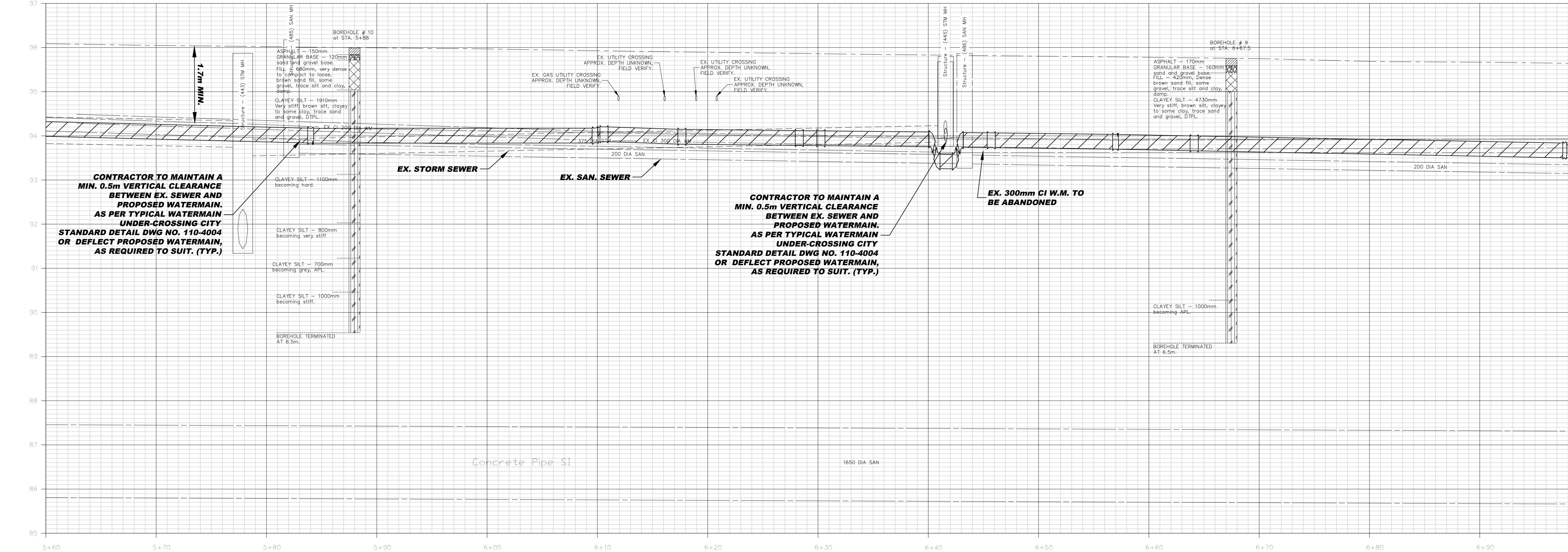
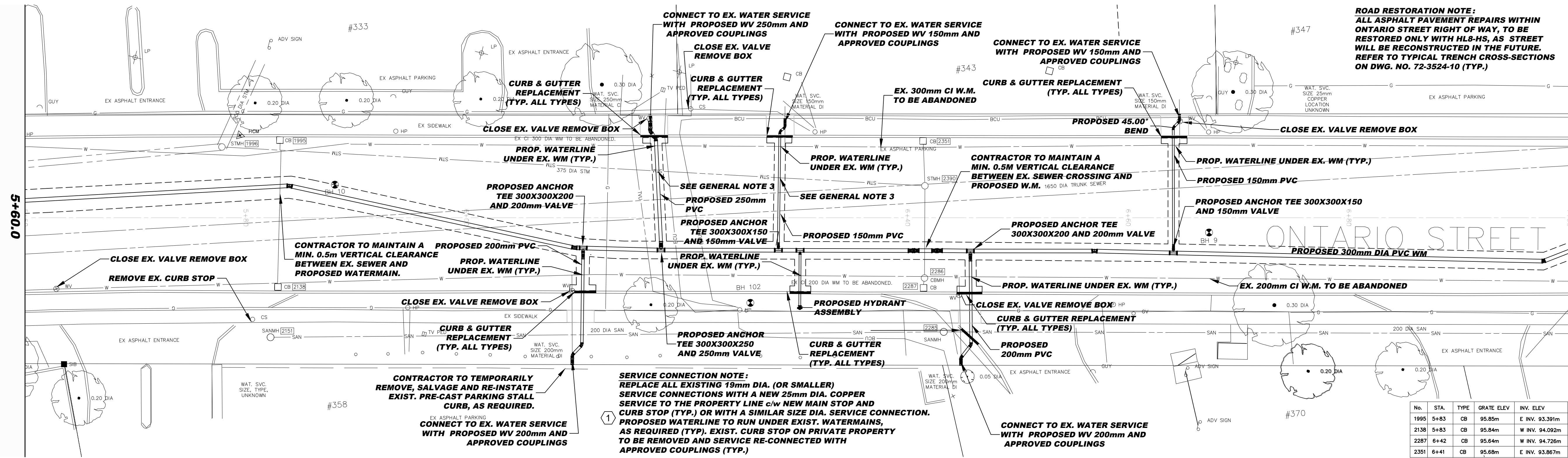
ST. CATHARINES ENGINEERING, FACILITIES, AND ENVIRONMENTAL SERVICES
ONTARIO STREET (RR#42)

Project Number P21-003 Ontario Street (RR#42) Underground Improvements Station 4+20 to 5+60
--

FIELD NOTES	100-
DATE	JAN. 2024
SCALE	H. 1:200 V. 1:50
DWG.No.	4
MUN.REF No.	72-3524-4
REV.	E

GENERAL NOTES:

- CONTRACTOR TO CONFIRM DEPTH, SIZE AND MATERIAL OF EX. WATERMAIN PRIOR TO CONSTRUCTION (TYP. ALL CONNECTIONS)
- CONTRACTOR TO CONFIRM LOCATION, DEPTH, SIZE AND MATERIAL OF ALL WATER SERVICES PRIOR TO INSTALLATION OF PROP. WATER SERVICES
- CONTRACTOR TO MAINTAIN 2.5m HORIZONTAL OR A 0.5m SEPARATION BETWEEN WATERMAIN / LARGE SERVICES AND SEWERS, PER CITY STANDARD DRAWING No. 110-4004, OR DEFLECT PROPOSED WATERMAIN AS REQUIRED TO SUIT.
- ALL WATERMAIN AND SEWER SEPARATIONS FOR PARALLEL AND CROSSING INSTALLATIONS TO FOLLOW MOE-F-6-1 PROCEDURES.
- WATERMAIN BRANCH OR HYDRANT LEAD TO CROSS UNDER EXISTING WATERMAIN USING 45 DEGREE BENDS PER CITY STANDARD DRAWING No. 110-4004
- ALL WATERMANS AND LARGE SERVICES TO BE PVC CLASS DR 18 PIPE.
- WATER SERVICE TO BE REPLACED FROM PROP. WATERMAIN TO PROPERTY LINE c/w NEW MAIN STOP, CURB STOP AND CURB BOX.
- EXIST. CURB BOXES TO BE REMOVED AND DISPOSED OF OFFSITE.
- PARTIAL UNDERGROUND SERVICES SHOWN ON THIS DRAWING ARE FOR INFORMATION PURPOSES ONLY. OTHER BURIED UTILITIES MAY EXIST WHICH ARE NOT SHOWN BECAUSE OF INSUFFICIENT INFORMATION. THE CONTRACTOR SHALL CONFIRM EXACT LOCATION AND DEPTH OF ALL SERVICES WITHIN THE PROJECT SITE LIMITS.
- CONTRACTOR TO REFER TO GEOTECHNICAL INVESTIGATION REPORT IN CONTRACT DOCUMENTS



EX CL ELEV	96.05	96.02	95.99	95.97	95.93	95.89	95.86	95.83	95.80	95.78	95.75	95.69	95.67
SAN SEWER ELEV													
STM SEWER ELEV													

NOTES

- THE POSITION OF THE POLE LINES, CONDUITS, WATERMAIN, SEWER AND OTHER UNDERGROUND AND ABOVE-GROUND UTILITIES AND STRUCTURES IS NOT NECESSARILY SHOWN ON THE CONSTRUCTION DRAWINGS AND WHERE SHOWN, THE ACCURACY OF THE POSITION OF SUCH UTILITIES AND STRUCTURES IS NOT GUARANTEED.
- BEFORE STARTING WORK, THE CONTRACTOR SHALL INFORM HIMSELF OF THE EXACT LOCATION OF SUCH UTILITIES AND STRUCTURES AND SHALL ASSUME ALL LIABILITY FOR DAMAGE TO THEM.

- HYDRO AND BELL POLES ARE TO BE SUPPORTED AS PER THE RESPECTIVE UTILITY REQUIREMENTS.
- ALL MANHOLE FRAMES, CATCH BASIN FRAMES, WATER VALVES AND GAS VALVES TO BE ADJUSTED TO FINISH GRADE.
- ALL PIPE SIZES ARE IN MILLIMETRES UNLESS OTHERWISE NOTED.
- ALL DIMENSIONS ARE IN METRES UNLESS OTHERWISE NOTED.
- HIGH PRIORITY FIBRE OPTIC BELL AND COGECO CABLES ARE PRESENT - USE EXTREME CAUTION.

BASE PLAN

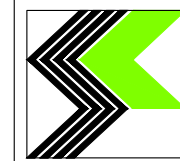
VB/JB

DESIGN

J.A.S.

CHECKED BY

F.K.



ST. CATHARINES
ENGINEERING, FACILITIES, AND
ENVIRONMENTAL SERVICES

ONTARIO STREET (RR#42)

Project Number P21-003
Ontario Street (RR#42)
Underground Improvements
Station 5+60 to 7+00

FIELD NOTES

100-

DATE

JAN. 2024

SCALE

H. 1:200
V. 1:50

DWG.No.

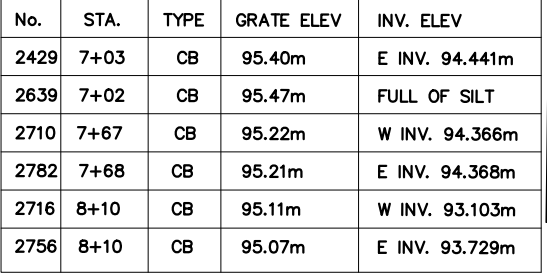
5


MUN. REF. No.

72-3524-5

REV. E

1. CONTRACTOR TO CONFIRM DEPTH, SIZE AND MATERIAL OF EX. EXISTING MAIN RIGID PIPE CONSTRUCTION (TYP. ALL CONNECTIONS)
2. CONTRACTOR TO CONFIRM LOCATION, DEPTH, SIZE AND MATERIAL, OF ALL WATER SERVICES PRIOR TO INSTALLATION OF PROP. WATER SERVICES
3. CONTRACTOR TO MAINTAIN 2.5m HORIZONTAL OR A 0.5m SEPARATION BETWEEN WATERMAIN (OR GAS) AND SEWERS, PER CITY STANDARD DRAWING NO. 110-0440, OR DEFLECT PROPOSED WATERMAIN AS REQUIRED TO SUIT.
4. ALL WATERMAIN AND SEWER SEPARATIONS FOR PARALLEL AND PERPENDICULAR INSTALLATIONS TO FOLLOW MOE-F-6-1 PROCEDURES.
5. WATERMAIN BRANCH OR HYDRANT LEAD TO CROSS UNDER EXISTING WATERMAIN USING 45 DEGREE BENDER CITY STANDARD DRAWING NO. 110-0440
6. ALL WATERS INES AND LARGE SERVICES TO BE PVC CLASS DR 18 PIPE.
7. WATER SERVICE TO BE REPLACED FROM PROP. WATERMAIN TO PROPERTY LINE @ NEW MAIN STOP, CURB STOP AND CURB BOX.
8. EXIST. CURB BOXES TO BE REMOVED AND DISPOSED OF OFFSITE.
9. PARTIAL UNDERGROUND SERVICES SHOWN ON THIS DRAWINGS ARE FOR INFORMATION PURPOSES ONLY. OTHER BURIED UTILITIES MAY EXIST WHICH ARE NOT SHOWN BECAUSE OF LIMITED INFORMATION. THE CONTRACTOR SHALL CONFIRM EXACT LOCATION AND DEPTH OF ALL SERVICES WITH THE PROJECT SITEMITS.
10. CONTRACTOR TO REFER TO GEOTECHNICAL INVESTIGATION REPORT IN CONTRACT DOCUMENTS



				NOTES		BASE PLAN				 ST. CATHARINES ENGINEERING, FACILITIES, AND ENVIRONMENTAL SERVICES		Project Number P21-003 Ontario Street (RR#42) Underground Improvements Station 7+00 to 8+40		FIELD NOTES 100-- DATE JAN. 2024 SCALE H: 1/200 V: 1/50 DWG.No. 6 MUN. REF. No. 72-3524-6 REV.	
E	ISSUED FOR TENDER	FEB. 2024	JAS	1. THE POSITION OF THE POLE LINES, CONDUITS, WATERMAIN, SEWER, AND OTHER UNDERGROUND UTILITIES AND ABOVE-GROUND UTILITIES AND STRUCTURES IS NOT NECESSARILY SHOWN ON THE CONSTRUCTION DRAWINGS AND WHERE SHOWN, ALL THE ACCURACY OF THE POSITION OF SUCH UTILITIES AND STRUCTURES IS NOT GUARANTEED.		3. HYDRO AND BELL POLES ARE TO BE SUPPORTED AS PER THE RESPECTIVE UTILITY REQUIREMENTS.		VB/JB							
D	ISSUED FOR DESIGN REVIEW	DEC. 2023	JAS	2. BEFORE STARTING WORK, THE CONTRACTOR SHALL INFORM HIMSELF OF THE EXACT LOCATION OF SUCH UTILITIES AND STRUCTURES AND SHALL ASSUME ALL LIABILITY FOR DAMAGE TO THEM.		4. ALL MANHOLE FRAMES, CATCH BASIN FRAMES, WATER VALVES AND GAS VALVES TO BE ADJUSTED TO FINISH GRADE.		DESIGN							
C	ISSUED FOR PRELIMINARY DESIGN REVIEW	JUN. 2023	JAS			5. ALL PIPE SIZES ARE IN MILLIMETRES UNLESS OTHERWISE NOTED.		J.A.S.							
B	REVISED BASE PLAN	FEB. 2023	JB			6. ALL DIMENSIONS ARE IN METRES UNLESS OTHERWISE NOTED.									
A	BASE PLAN	DEC. 2022	VB			7. HIGH PRIORITY FIBRE OPTIC BELL AND COGECO CABLES ARE PRESENT – USE EXTREME CAUTION.		CHECKED BY							
NO.	REVISION	DATE	INIT.					F.K.							

GENERAL NOTES:

- CONTRACTOR TO CONFIRM DEPTH, SIZE AND MATERIAL OF EX. WATERMAIN PRIOR TO CONSTRUCTION (TYP. ALL CONNECTIONS)
- CONTRACTOR TO CONFIRM LOCATION, DEPTH, SIZE AND MATERIAL OF ALL WATER SERVICES PRIOR TO INSTALLATION OF PROP. WATER SERVICES
- CONTRACTOR TO MAINTAIN 2.5m HORIZONTAL OR A 0.5m SEPARATION BETWEEN WATERMAIN (LARGE SERVICES AND SEWERS, PER CITY STANDARD DRAWING No. 110-4004, OR DEFLECT PROPOSED WATERMAIN AS REQUIRED TO SUIT.
- ALL WATERMAIN AND SEWER SEPARATIONS FOR PARALLEL AND CROSSING INSTALLATIONS TO FOLLOW MOE-F-6-1 PROCEDURES.
- WATERMAIN BRANCH OR HYDRANT LEAD TO CROSS UNDER EXISTING WATERMAIN USING 45 DEGREE BENDS PER CITY STANDARD DRAWING No. 110-4004
- ALL WATERMANS AND LARGE SERVICES TO BE PVC CLASS DR 18 PIPE.
- WATER SERVICE TO BE REPLACED FROM PROP. WATERMAIN TO PROPERTY LINE c/w NEW MAIN STOP, CURB STOP AND CURB BOX.
- EXIST. CURB BOXES TO BE REMOVED AND DISPOSED OF OFFSITE.
- PARTIAL UNDERGROUND SERVICES SHOWN ON THIS DRAWING ARE FOR INFORMATION PURPOSES ONLY. OTHER BURIED UTILITIES MAY EXIST WHICH ARE NOT SHOWN BECAUSE OF INSUFFICIENT INFORMATION. THE CONTRACTOR SHALL CONFIRM EXACT LOCATION AND DEPTH OF ALL SERVICES WITHIN THE PROJECT SITE LIMITS.
- CONTRACTOR TO REFER TO GEOTECHNICAL INVESTIGATION REPORT IN CONTRACT DOCUMENTS

ROAD RESTORATION NOTE:
ALL ASPHALT PAVEMENT REPAIRS WITHIN ONTARIO STREET RIGHT OF WAY, TO BE RESTORED ONLY WITH HLB-HS, AS STREET WILL BE RECONSTRUCTED IN THE FUTURE. REFER TO TYPICAL TRENCH CROSS-SECTIONS ON DWG. NO. 72-3524-10 (TYP.)

PROPOSED HYDRANT ASSEMBLY

**REMOVE EX. HYDRANT
CLOSE EX. VALVE
REMOVE BOX**

**CONNECT TO EX. WATER SERVICE
WITH PROPOSED WV 150mm
AND APPROVED COUPLINGS**

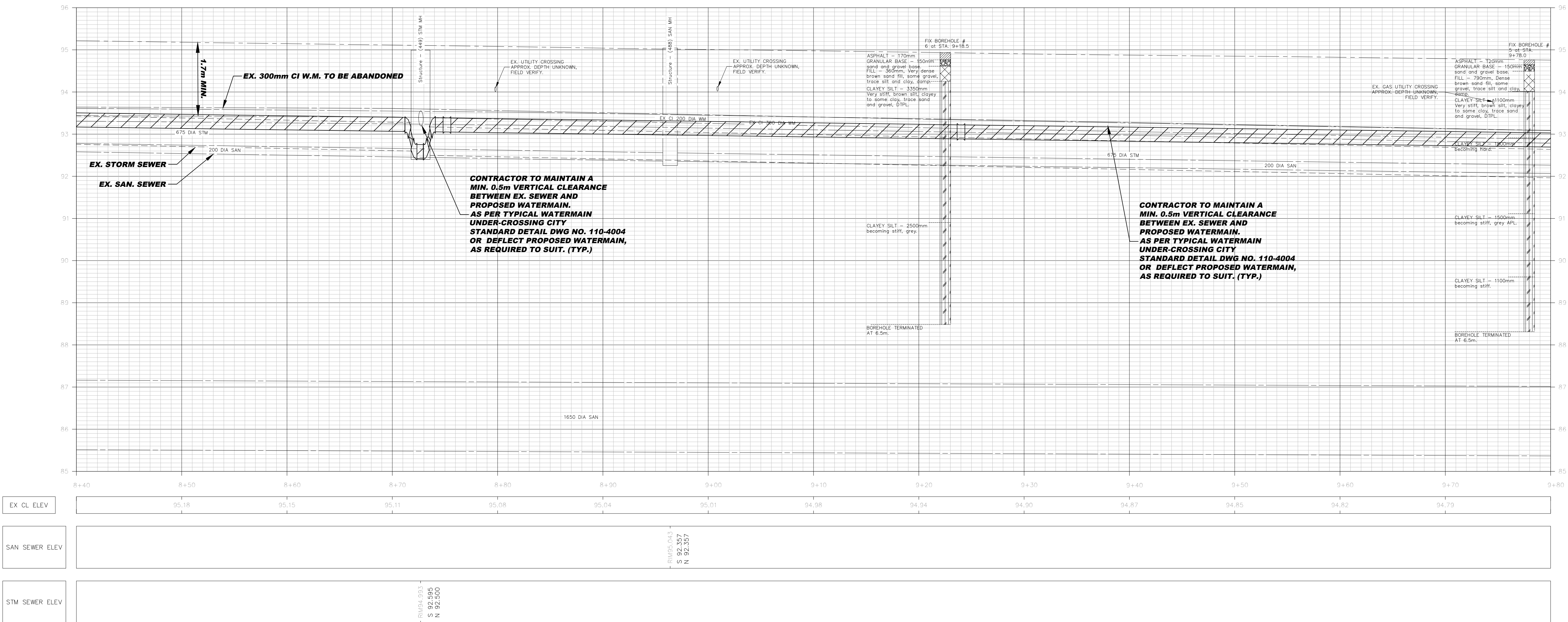
SERVICE CONNECTION NOTE:
REPLACE ALL EXISTING 19mm DIA. (OR SMALLER) SERVICE CONNECTIONS WITH A NEW 25mm DIA. COPPER SERVICE TO THE PROPERTY LINE c/w NEW MAIN STOP AND CURB STOP (TYP.) OR WITH A SIMILAR SIZE DIA. SERVICE CONNECTION. PROPOSED WATERLINE TO RUN UNDER EXIST. WATERMANS, AS REQUIRED (TYP). EXIST. CURB STOP ON PRIVATE PROPERTY TO BE REMOVED AND SERVICE RE-CONNECTED WITH APPROVED COUPLINGS (TYP.)

0+00+8

**CONTRACTOR TO MAINTAIN A MIN. 0.5m VERTICAL CLEARANCE
BETWEEN EX. SEWER CROSSING AND PROPOSED W.M.**

No.	STA.	TYPE	GRATE ELEV	INV. ELEV	
2960	8+72	CB	94.90m	E INV. 94.026m	
2961	8+72	CBMH	94.934	E INV. 93.474m W INV. 94.054m	
2963	8+72	CBMH	94.94m	E INV. 93.834m W INV. 93.494m	
2964	8+72	CB	94.92m	W INV. 93.824m	
3134	9+36	CB	94.68m	E INV. 93.118m W INV. 92.718m	
3199	9+36	CB	94.68m	E INV. 93.318m	

0+00+9

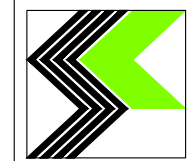


NO.	REVISION	DATE	INIT.
E	ISSUED FOR TENDER	FEB. 2024	JAS
D	ISSUED FOR DESIGN REVIEW	DEC. 2023	JAS
C	ISSUED FOR PRELIMINARY DESIGN REVIEW	JUN. 2023	JAS
B	REVISED BASE PLAN	FEB. 2023	JB
A	BASE PLAN	DEC. 2022	VB
NO.	REVISION	DATE	INIT.

NOTES

- THE POSITION OF THE POLE LINES, CONDUITS, WATERMAIN, SEWER AND OTHER UNDERGROUND AND ABOVE-GROUND UTILITIES AND STRUCTURES IS NOT NECESSARILY SHOWN ON THE CONSTRUCTION DRAWINGS AND WHERE SHOWN, THE ACCURACY OF THE POSITION OF SUCH UTILITIES AND STRUCTURES IS NOT GUARANTEED.
- BEFORE STARTING WORK, THE CONTRACTOR SHALL INFORM HIMSELF OF THE EXACT LOCATION OF SUCH UTILITIES AND STRUCTURES AND SHALL ASSUME ALL LIABILITY FOR DAMAGE TO THEM.
- HYDRO AND BELL POLES ARE TO BE SUPPORTED AS PER THE RESPECTIVE UTILITY REQUIREMENTS.
- ALL MANHOLE FRAMES, CATCH BASIN FRAMES, WATER VALVES AND GAS VALVES TO BE ADJUSTED TO FINISH GRADE.
- ALL PIPE SIZES ARE IN MILLIMETRES UNLESS OTHERWISE NOTED.
- ALL DIMENSIONS ARE IN METRES UNLESS OTHERWISE NOTED.
- HIGH PRIORITY FIBRE OPTIC BELL AND COGECO CABLES ARE PRESENT - USE EXTREME CAUTION.

BASE PLAN	VB/JB
DESIGN	J.A.S.
CHECKED BY	F.K.



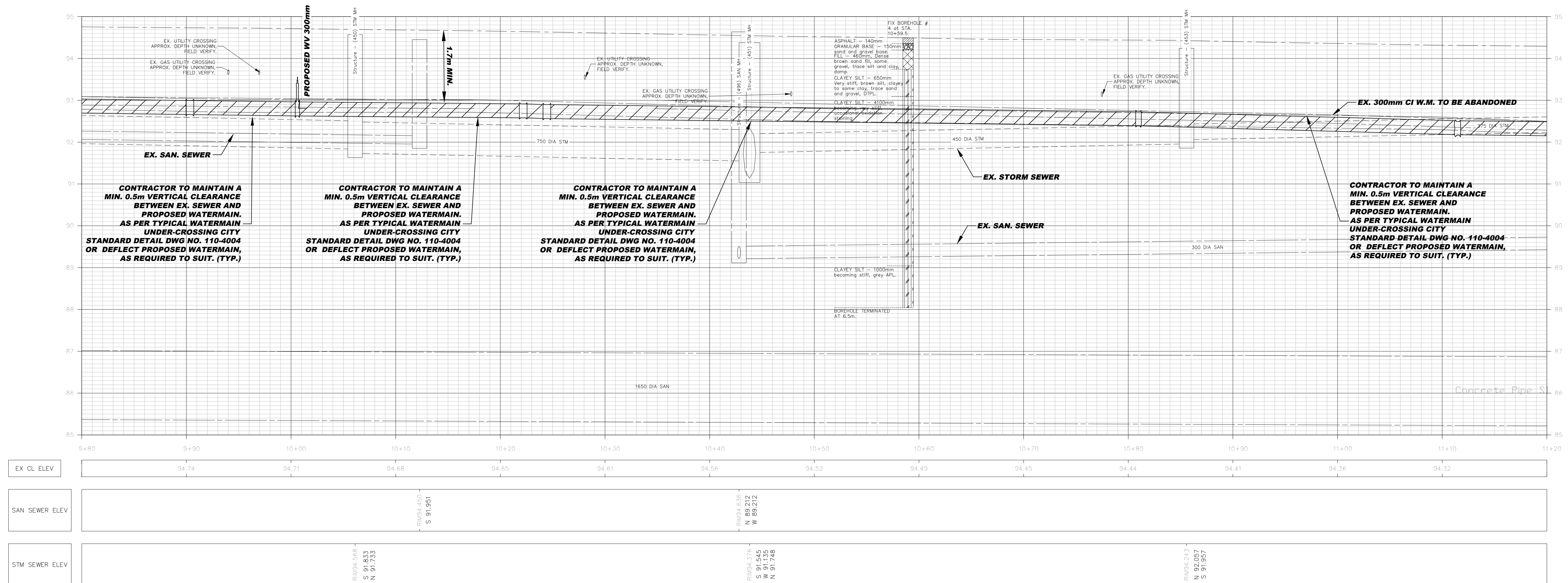
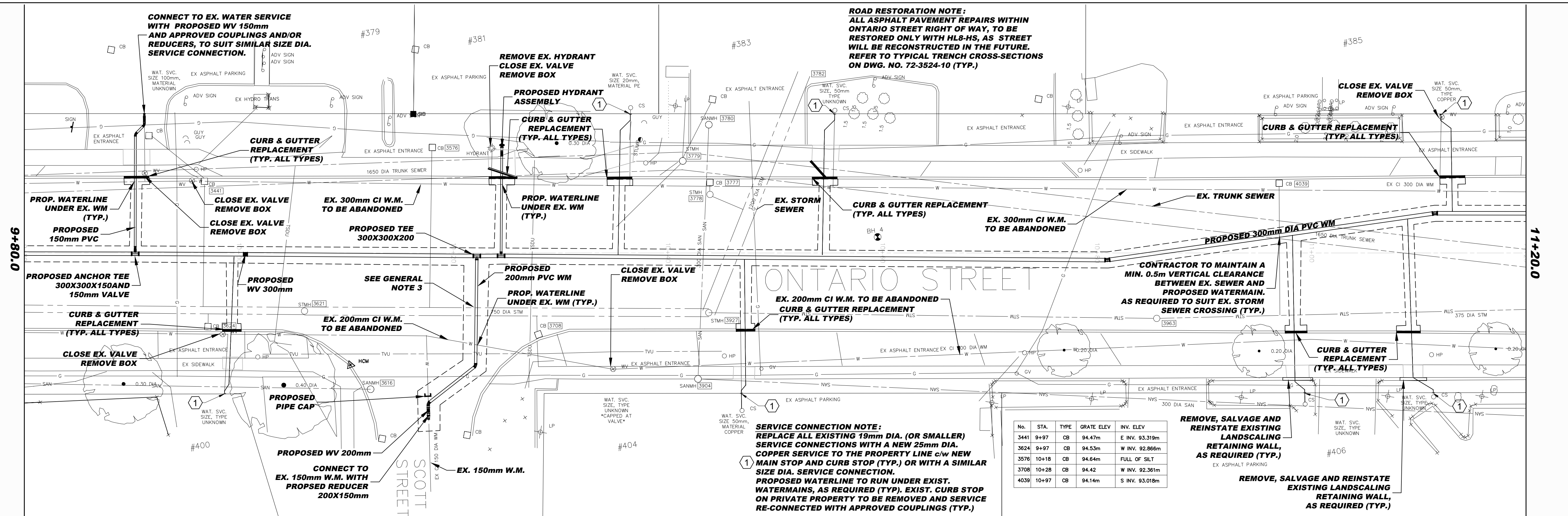
ST. CATHARINES
ENGINEERING, FACILITIES, AND
ENVIRONMENTAL SERVICES


ONTARIO STREET (RR#42)

Project Number P21-003
Ontario Street (RR#42)
Underground Improvements
Station 8+40 to 9+80

FIELD NOTES	100-
DATE	JAN. 2024
SCALE	H. 1:200 V. 1:50
DWG.No.	7
MUN.REF No.	72-3524-7
REV.	E

1. CONTRACTOR TO CONFIRM DEPTH, SIZE AND MATERIAL OF EX. WATERMAIN PRIOR TO CONSTRUCTION (TYP. ALL CONNECTIONS)
2. CONTRACTOR TO CONFIRM LOCATION, DEPTH, SIZE AND MATERIAL. OF ALL WATER SERVICES PRIOR TO INSTALLATION OF PROPOSED WATER SERVICES
3. CONTRACTOR TO MAINTAIN 2.5m HORIZONTAL OR 0.5m SEPARATION BETWEEN WATERMAIN / LARGE SERVICES AND SEWERS, AND 1.0m BETWEEN ALL OTHERS. 110-400d, OR DEFLECT PROPOSED WATERMAIN AS REQUIRED TO SUIT.
4. ALL WATERMAIN AND SEWER SEPARATIONS FOR PARALLEL AND PERPENDICULAR INSTALLATIONS FOLLOW MOE-F-6-1 PROCEDURES.
5. WATERMAIN BRANCH OR HYDRANT LEAD TO CROSS UNDER EXISTING WATERMAIN USING 45 DEGREE BENDS PER CITY STANDARD DRAWING NO. 110-400d
6. ALL WATERMAINS AND LARGE SERVICES TO BE PVC CLASS 18 PIPE.
7. WATER SERVICE TO BE REPLACED FROM PROP. WATERMAIN TO PROPERTY LINE c/w NEW MAIN STOP, CURB STOP AND CURB BOX.
8. EXIST. CURB BOXES TO BE REMOVED AND DISPOSED OF OFFSITE.
9. PARTIAL UNDERGROUND SERVICES SHOWN ON THIS DRAWINGS ARE FOR INFORMATION PURPOSES ONLY. OTHER BURIED UTILITIES MAY EXIST WHICH ARE NOT SHOWN BECAUSE OF INSUFFICIENT INFORMATION. CONTRACTOR SHALL CONFIRM EXACT LOCATION AND DEPTH OF ALL SERVICES WITHIN THE PROJECT SITE LIMITS.
10. CONTRACTOR TO REFER TO THE TECHNICAL INVESTIGATION REPORT IN CONTRACT DOCUMENTS



			NOTES	1. THE POSITION OF THE POLE LINES, CONDUITS, WATERMAIN, SEWER AND OTHER UNDERGROUND AND ABOVE-GROUND UTILITIES AND STRUCTURES IS NOT NECESSARILY SHOWN ON THE CONSTRUCTION DRAWINGS AND WHERE SHOWN, THE ACCURACY OF THE POSITION OF SUCH UTILITIES AND STRUCTURES IS NOT GUARANTEED.		3. HYDRO AND BELL POLES ARE TO BE SUPPORTED AS PER THE RESPECTIVE UTILITY REQUIREMENTS.		BASE PLAN	VB/UB	<div><div>ST. CATHARINES ENGINEERING, FACILITIES, AND ENVIRONMENTAL SERVICES</div><div>ONTARIO STREET (RR#42)</div></div> <div>Project Number P21-003 Ontario Street (RR#42) Underground Improvements Station 9+80 to 11+20</div>	FIELD NOTES	100--	
D	ISSUED FOR TENDER	FEB. 2024		JAS.	4. ALL MANHOLE FRAMES, CATCH BASIN FRAMES, WATER VALVES AND GAS VALVES TO BE ADJUSTED TO FINISH GRADE.		4. ALL MANHOLE FRAMES, CATCH BASIN FRAMES, WATER VALVES AND GAS VALVES TO BE ADJUSTED TO FINISH GRADE.		DESIGN			DATE	JAN. 2024
E	ISSUED FOR DESIGN REVIEW	DEC. 2023		JAN.	5. ALL PIPE SIZES ARE IN MILLIMETRES UNLESS OTHERWISE NOTED.		5. ALL PIPE SIZES ARE IN MILLIMETRES UNLESS OTHERWISE NOTED.					SCALE	H. 1:200 V. 1:50
C	ISSUED FOR PRELIMINARY DESIGN REVIEW	JUN. 2023		JAS.	6. ALL DIMENSIONS ARE IN METRES UNLESS OTHERWISE NOTED.		6. ALL DIMENSIONS ARE IN METRES UNLESS OTHERWISE NOTED.		J.A.S.			DWG.No.	8
B	REVISED BASE PLAN	FEB. 2023		JB	2. BEFORE STARTING WORK, THE CONTRACTOR SHALL INFORM HIMSELF OF THE EXISTENCE AND LOCATION OF SUCH UTILITIES AND STRUCTURES AND SHALL ASSUME ALL LIABILITY FOR DAMAGE TO THEM.		7. HIGH PRIORITY FIBRE OPTIC BELL AND COGECO CABLES ARE PRESENT – USE EXTREME CAUTION.					MUN.REF No.	72-3524-8
A	BASE PLAN	DEC. 2022	VB					CHECKED BY	F.K.	REV.			
NO	REVISION	DATE	INIT.										

- GENERAL NOTES:

1. CONTRACTOR TO CONFIRM DEPTH, SIZE AND MATERIAL OF EX. WATERMAIN PRIOR TO CONSTRUCTION (TYP. ALL CONNECTIONS)

2. CONTRACTOR TO CONFIRM LOCATION, DEPTH, SIZE AND MATERIAL OF ALL WATER SERVICES PRIOR TO INSTALLATION OF PROP. WATER SERVICES

3. CONTRACTOR TO MAINTAIN 2.5m HORIZONTAL OR A 0.5m SEPARATION BETWEEN WATERMAIN / LARGE SERVICES AND SEWERS, PER CITY STANDARD DRAWING No. 110-4004, OR DEFLECT PROPOSED WATERMAIN AS REQUIRED TO SUIT

4. ALL WATERMAIN AND SEWER SEPERATIONS FOR PARALLEL AND CROSSING INSTALLATIONS TO FOLLOW MOE-F-6-1 PROCEDURES.

5. WATERMAIN BRANCH OR HYDRANT
LEAD TO CROSS UNDER EXISTING
WATERMAIN USING 45 DEGREE
BENDS PER CITY STANDARD
DRAWING No. 110-4004

6. ALL WATERMAINS AND LARGE SERVICES TO BE PVC CLASS DR 18 PIPE.
7. WATER SERVICE TO BE REPLACED FROM PROP. WATERMAIN TO

8. EXIST. CURB BOXS TO BE REMOVED AND DISPOSED OF OFFSITE.

9. PARTIAL UNDERGROUND SERVICES SHOWN ON THIS DRAWING ARE FOR INFORMATION PURPOSES ONLY. OTHER BURIED UTILITIES MAY EXIST WHICH ARE NOT SHOWN BECAUSE OF INSUFFICIENT INFORMATION. THE CONTRACTOR SHALL CONFIRM EXACT LOCATION AND DEPTH OF ALL SERVICES WITHIN THE PROJECT SITE LIMITS.

10. CONTRACTOR TO REFER TO
GEOTECHNICAL INVESTIGATION
REPORT IN CONTRACT DOCUMENTS

No.	STA.	TYPE	GRATE ELEV	INV. ELEV	
3953	11+44	CB	94.00m	W INV. 92.432m	
4033	11+44	CB	94.01m	E INV. 92.487m	W INV. 92.627m
4255	11+84	CB	93.83m	E INV. 93.019m	
4256	11+84	MH	93.91m	E INV. 92.367m	W INV. 92.597m

ROAD RESTORATION NOTE:
ALL ASPHALT PAVEMENT REPAIRS WITHIN
ONTARIO STREET RIGHT OF WAY, TO BE
RESTORED ONLY WITH HL8-HS, AS STREET
WILL BE RECONSTRUCTED IN THE FUTURE.
REFER TO TYPICAL TRENCH CROSS-SECTIONS
ON DWG. NO. 72-3524-10 (TYP.)

**PROP. WATERLINE UNDER
EX. WM (TYP.)**

**CONNECT TO EX. WATER SERVICE
WITH PROPOSED WV 150mm
- AND APPROVED COUPLINGS AND/OR
REDUCERS, TO SUIT SIMILAR SIZE DIA.
SERVICE CONNECTION.**

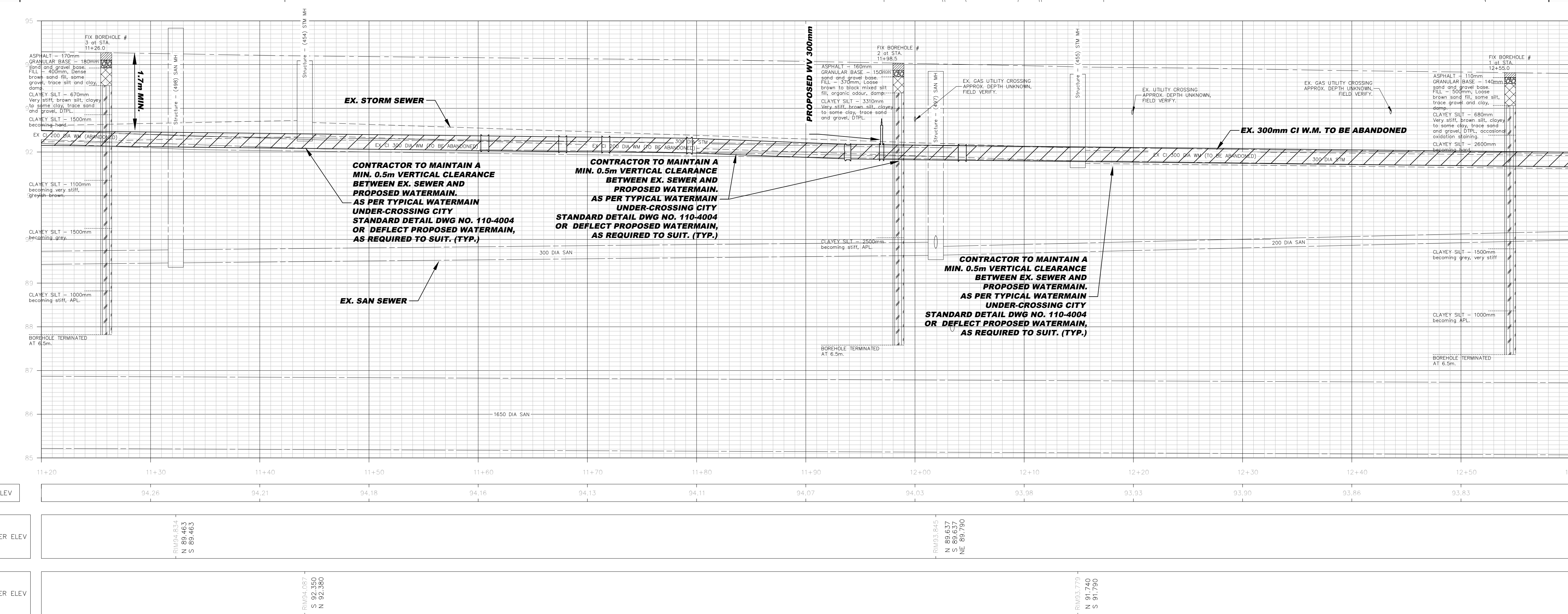
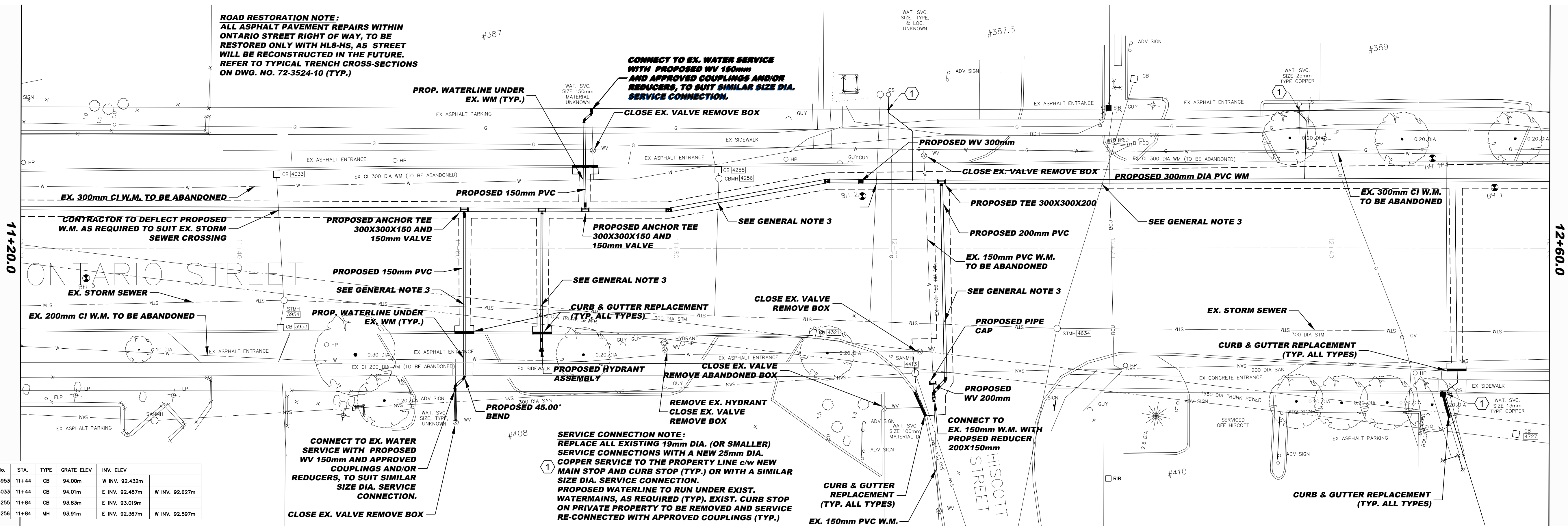
VE BOX

WAT. SVC.
SIZE, TYPE,
& LOC.
UNKNOWN

#387.5

#389

12+60.0



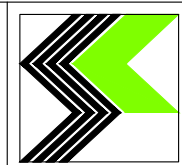
E	ISSUED FOR TENDER	FEB. 2024	JAS
D	ISSUED FOR DESIGN REVIEW	DEC. 2023	JAS
C	ISSUED FOR PRELIMINARY DESIGN REVIEW	FEB. 2023	JAS
B	REVISED BASE PLAN	JUN. 2023	JB
A	BASE PLAN	DEC. 2022	VB
NO.	REVISION	DATE	INIT.

NOTES

1. THE POSITION OF THE POLE LINES, CONDUITS, WATERMAIN, SEWER AND OTHER UNDERGROUND AND ABOVE-GROUND UTILITIES AND STRUCTURES IS NOT NECESSARILY SHOWN ON THE CONSTRUCTION DRAWINGS AND WHERE SHOWN, THE ACCURACY OF THE POSITION OF SUCH UTILITIES AND STRUCTURES IS NOT GUARANTEED.
2. BEFORE STARTING WORK, THE CONTRACTOR SHALL INFORM HIMSELF OF THE EXACT LOCATION OF SUCH UTILITIES AND STRUCTURES AND SHALL ASSUME ALL LIABILITY FOR DAMAGE TO THEM.

3. HYDRO AND BEL POLES ARE TO BE SUPPORTED AS PER THE RESPECTIVE UTILITY REQUIREMENTS.
4. ALL MANHOLE FRAMES, CATCH BASIN FRAMES, WATER VALVES AND GAS VALVES TO BE ADJUSTED TO FINISH GRADE.
5. ALL PIPE SIZES ARE IN MILLIMETRES UNLESS OTHERWISE NOTED.
6. ALL DIMENSIONS ARE IN METRES UNLESS OTHERWISE NOTED.
7. HIGH PRIORITY FIBRE OPTIC BELL AND COGECO CABLES ARE PRESENT - USE EXTREME CAUTION.

BASE PLAN	VB/JB
DESIGN	J.A.S.
CHECKED BY	F.K.



ST. CATHARINES
ENGINEERING, FACILITIES, AND
ENVIRONMENTAL SERVICES

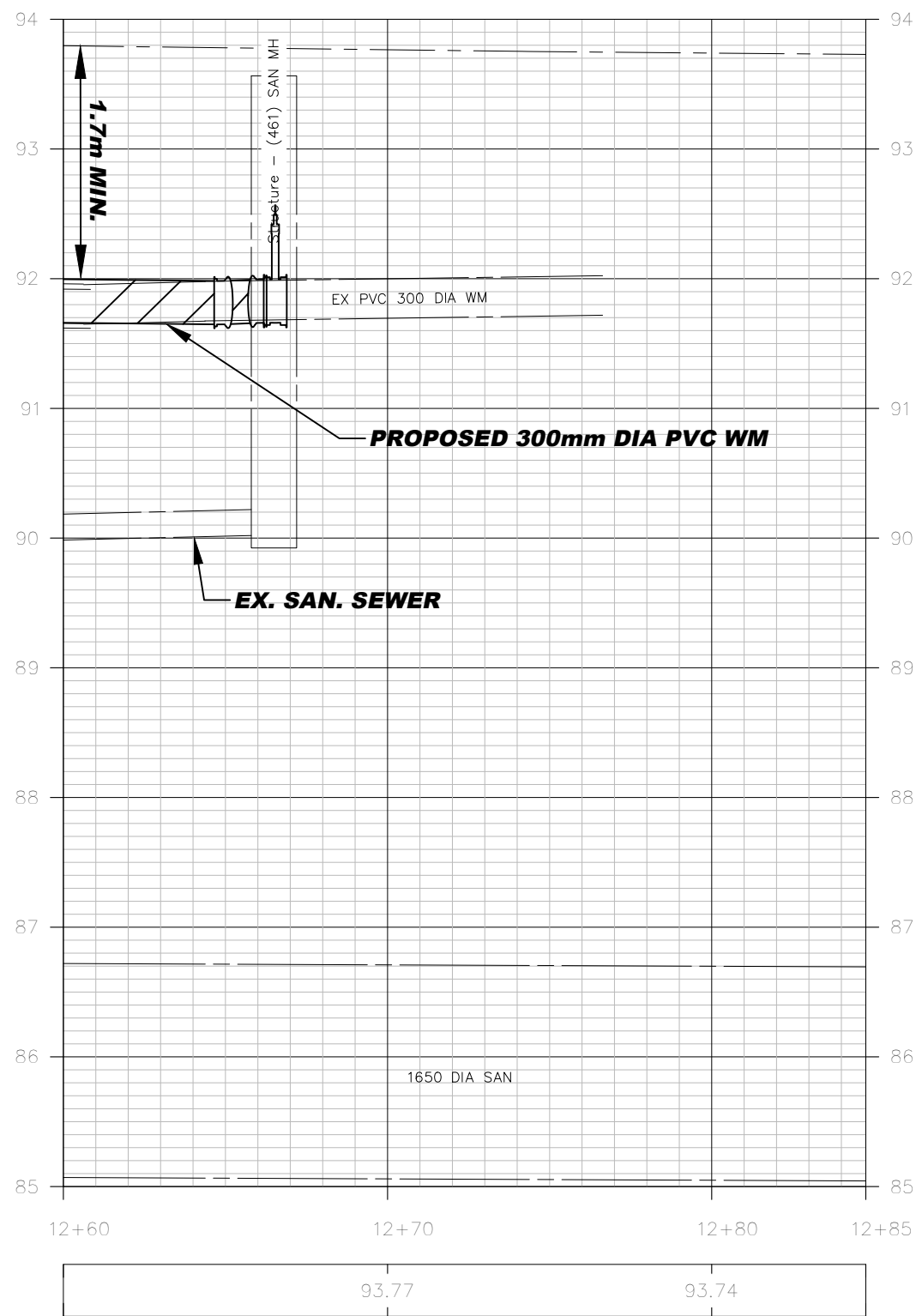
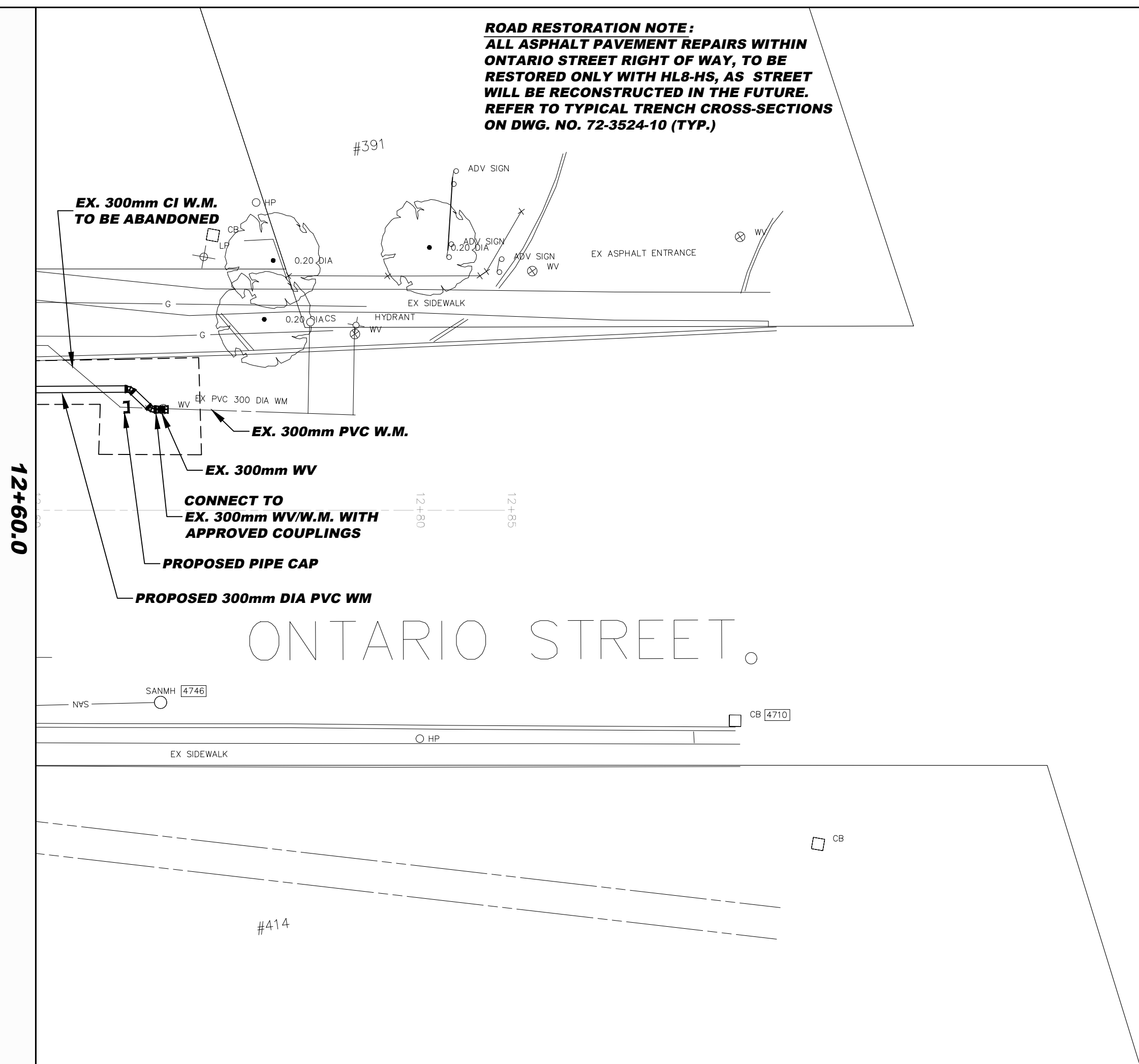
ONTARIO STREET (RR#42)

**Project Number P21-003
Ontario Street (RR#42)
Underground Improvements
Station 11+20 to 12+60**

FIELD NOTES	100--
DATE	JAN. 2024
SCALE	H. 1:200 V. 1:50
DWG.No.	9
MUN.REF.No.	72-3524 -9
	REV E

- GENERAL NOTES:
- CONTRACTOR TO CONFIRM DEPTH, SIZE AND MATERIAL OF EX. WATERMAIN PRIOR TO CONSTRUCTION (TYP. ALL CONNECTIONS)
 - CONTRACTOR TO CONFIRM LOCATION, DEPTH, SIZE AND MATERIAL OF ALL WATER SERVICES PRIOR TO INSTALLATION OF PROP. WATER SERVICES
 - CONTRACTOR TO MAINTAIN 2.5m HORIZONTAL OR A 0.5m SEPARATION BETWEEN WATERMAIN / LARGE SERVICES AND SEWERS, PER CITY STANDARD DRAWING No. 110-4004, OR DEFLECT PROPOSED WATERMAIN AS REQUIRED TO SUIT.
 - ALL WATERMAIN AND SEWER SEPERATIONS FOR PARALLEL AND CROSSING INSTALLATIONS TO FOLLOW MOE-F-6-1 PROCEDURES.
 - WATERMAIN BRANCH OR HYDRANT LEAD TO CROSS UNDER EXISTING WATERMAIN USING 45 DEGREE BENDS PER CITY STANDARD DRAWING No. 110-4004
 - ALL WATERMAINS AND LARGE SERVICES TO BE PVC CLASS DR 18 PIPE.
 - WATER SERVICE TO BE REPLACED FROM PROP. WATERMAIN TO PROPERTY LINE ON NEW MAIN STOP, CURB STOP AND CURB BOX.
 - EXIST. CURB BOXS TO BE REMOVED AND DISPOSED OF OFFSITE.
 - PARTIAL UNDERGROUND SERVICES SHOWN ON THIS DRAWING ARE FOR INFORMATION PURPOSES ONLY. OTHER BURIED UTILITIES MAY EXIST WHICH ARE NOT SHOWN BECAUSE OF INSUFFICIENT INFORMATION. THE CONTRACTOR SHALL CONFIRM EXACT LOCATION AND DEPTH OF ALL SERVICES WITHIN THE PROJECT SITE LIMITS.
 - CONTRACTOR TO REFER TO GEOTECHNICAL INVESTIGATION REPORT IN CONTRACT DOCUMENTS

12+60.0

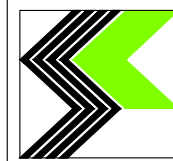


EX CL. ELEV	93.77	93.74
SAN SEWER ELEV	RIM 3.564 S 90.024	
STM SEWER ELEV		

NOTES

- THE POSITION OF THE POLE LINES, CONDUITS, WATERMAIN, SEWER AND OTHER UNDERGROUND AND ABOVE-GROUND UTILITIES AND STRUCTURES IS NOT NECESSARILY SHOWN ON THE CONSTRUCTION DRAWINGS AND WHERE SHOWN, THE ACCURACY OF THE POSITION OF SUCH UTILITIES AND STRUCTURES IS NOT GUARANTEED.
- BEFORE STARTING WORK, THE CONTRACTOR SHALL INFORM HIMSELF OF THE EXACT LOCATION OF SUCH UTILITIES AND STRUCTURES AND SHALL ASSUME ALL LIABILITY FOR DAMAGE TO THEM.
- HYDRO AND BELL POLES ARE TO BE SUPPORTED AS PER THE RESPECTIVE UTILITY REQUIREMENTS.
- ALL MANHOLE FRAMES, CATCH BASIN FRAMES, WATER VALVES AND GAS VALVES TO BE ADJUSTED TO FINISH GRADE.
- ALL PIPE SIZES ARE IN MILLIMETRES UNLESS OTHERWISE NOTED.
- ALL DIMENSIONS ARE IN METRES UNLESS OTHERWISE NOTED.
- HIGH PRIORITY FIBRE OPTIC BELL AND COGECO CABLES ARE PRESENT - USE EXTREME CAUTION.

BASE PLAN	VB/JB
DESIGN	J.A.S.
CHECKED BY	F.K.



ST. CATHARINES
ENGINEERING, FACILITIES, AND
ENVIRONMENTAL SERVICES

ONTARIO STREET (RR#42)

Project Number P21-003
Ontario Street (RR#42)
Underground Improvements
Station 12+60 to 12+85

FIELD NOTES	100-
DATE	JAN. 2024
SCALE	H. 1:200 V. 1:50
DWG.No.	10
MUN.REF No.	72-3524-10
REV.	E