

MATCHLINE - STA. 3+60

SEE PAGE 3  
MATCHLINE - STA. 4+85

NO.	REVISION	DATE	INIT.
2	SIDEWALK DESIGN	31 MAY 2021	CS
1	BASE PLANS	29 MAY 2020	SI

**DISCLAIMER:**

- THE POSITION OF THE POLE LINES, CONDUITS, WATERMAIN, SEWER AND OTHER UNDERGROUND AND ABOVE-GROUND UTILITIES AND STRUCTURES IS NOT NECESSARILY SHOWN ON THE CONSTRUCTION DRAWINGS AND WHERE SHOWN, THE ACCURACY OF THE POSITION OF SUCH UTILITIES AND STRUCTURES IS NOT GUARANTEED.
- BEFORE STARTING WORK, THE CONTRACTOR SHALL INFORM HIMSELF OF THE EXACT LOCATION OF SUCH UTILITIES AND STRUCTURES AND SHALL ASSUME ALL LIABILITY FOR DAMAGE TO THEM.

- HYDRO AND BELL POLES ARE TO BE SUPPORTED AS PER THE RESPECTIVE UTILITY REQUIREMENTS.
- ALL MANHOLE FRAMES, CATCH BASIN FRAMES, WATER VALVES AND GAS VALVES TO BE ADJUSTED TO FINISH GRADE.
- ALL PIPE SIZES ARE IN MILLIMETRES UNLESS OTHERWISE NOTED.
- ALL DIMENSIONS ARE IN METRES UNLESS OTHERWISE NOTED.
- HIGH PRIORITY FIBRE OPTIC BELL AND COGECO CABLES ARE PRESENT - USE EXTREME CAUTION.

BASE PLAN	SI
DESIGN	
CHECKED BY	

BENCHMARK  
BM# 8038038  
TABLET SET HORIZONTALLY  
IN THE EAST FACE OF  
THE CONC. FOUNDATION  
OF THE BLDG. AT THE  
SOUTHWEST CORNER OF  
NIAGARA STREET AND  
LINWELL ROAD  
ELEVATION: 100.41m



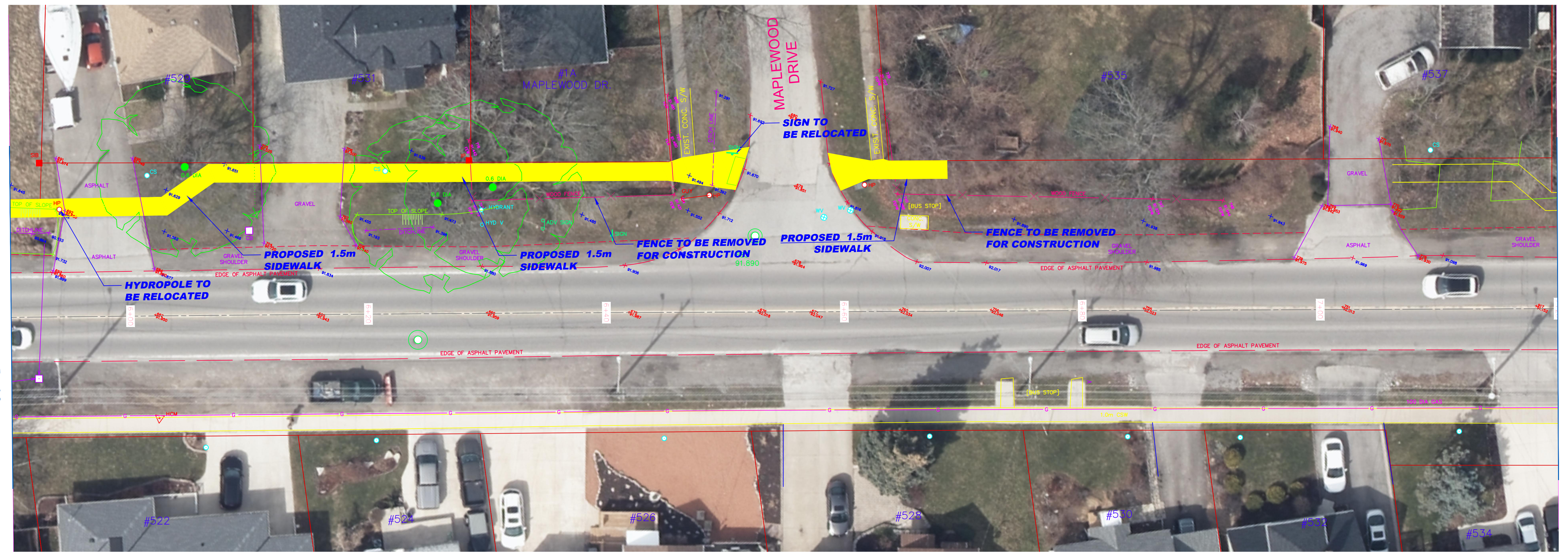
**Project No. P 20-\_\_**  
**NIAGARA STREET SIDEWALK**  
**- West Side -**  
**From Linwell Road to Scott Street**  
**Station 3+60 to 4+85**

FIELD NOTES	100-
DATE	MAY, 2021
SCALE	H. 1:200 V. 1:50
DWG.No.	1
MUN.REF.No.	
REV.	



MATCHLINE - STA. 4+85  
SEE PAGE 2

SEE BELOW  
MATCHLINE - STA. 5+90



MATCHLINE - STA. 5+90  
SEE ABOVE

SEE PAGE 4  
MATCHLINE - STA. 7+20

NO.	REVISION	DATE	INIT.
2	SIDEWALK DESIGN	31 MAY 2021	CS
1	BASE PLANS	29 MAY 2020	SI

**DISCLAIMER:**

- THE POSITION OF THE POLE LINES, CONDUITS, WATERMAIN, SEWER AND OTHER UNDERGROUND AND ABOVE-GROUND UTILITIES AND STRUCTURES IS NOT NECESSARILY SHOWN ON THE CONSTRUCTION DRAWINGS AND WHERE SHOWN, THE ACCURACY OF THE POSITION OF SUCH UTILITIES AND STRUCTURES IS NOT GUARANTEED.
- BEFORE STARTING WORK, THE CONTRACTOR SHALL INFORM HIMSELF OF THE EXACT LOCATION OF SUCH UTILITIES AND STRUCTURES AND SHALL ASSUME ALL LIABILITY FOR DAMAGE TO THEM.

- HYDRO AND BELL POLES ARE TO BE SUPPORTED AS PER THE RESPECTIVE UTILITY REQUIREMENTS.
- ALL MANHOLE FRAMES, CATCH BASIN FRAMES, WATER VALVES AND GAS VALVES TO BE ADJUSTED TO FINISH GRADE.
- ALL PIPE SIZES ARE IN MILLIMETRES UNLESS OTHERWISE NOTED.
- ALL DIMENSIONS ARE IN METRES UNLESS OTHERWISE NOTED.
- HIGH PRIORITY FIBRE OPTIC BELL AND COGECO CABLES ARE PRESENT - USE EXTREME CAUTION.

BASE PLAN	SI
DESIGN	
CHECKED BY	

BENCHMARK  
BM# 8038038  
TABLET SET HORIZONTALLY  
IN THE EAST FACE OF  
THE CONC. FOUNDATION  
OF THE BLDG. AT THE  
SOUTHWEST CORNER OF  
NIAGARA STREET AND  
LINWELL ROAD  
ELEVATION: 100.41m

**ST. CATHARINES  
ENGINEERING, FACILITIES, AND  
ENVIRONMENTAL SERVICES**

**Project No. P 20-\_\_**  
**NIAGARA STREET SIDEWALK**  
**- West Side -**  
**From Linwell Road to Scott Street**  
**Station 4+85 to 7+20**

FIELD NOTES	100-
DATE	MAY, 2021
SCALE	H. 1:200 V. 1:50
DWG.No.	2
MUN.REF.No.	
REV.	