

**Critical
to the success
of the Study
is you.**

The Secondary Plan will establish a clear vision, goals, objectives, land use policies and permissions, and the implementation strategies required to guide the future development of the Ontario Street Corridor.

We need and welcome your input, comments, questions and ideas.

Today's open house has two purposes:

1. **To introduce** the project, to provide background, context, study components, process, and timeline.
2. **To invite** your participation and input.

Today's Schedule

6:30 p.m. Doors open and display materials

7 p.m. Welcome and presentation followed by question and answer period

Be Involved

There are lots of ways to be involved in the Ontario Street Corridor Secondary Plan.

E-mail us your thoughts:

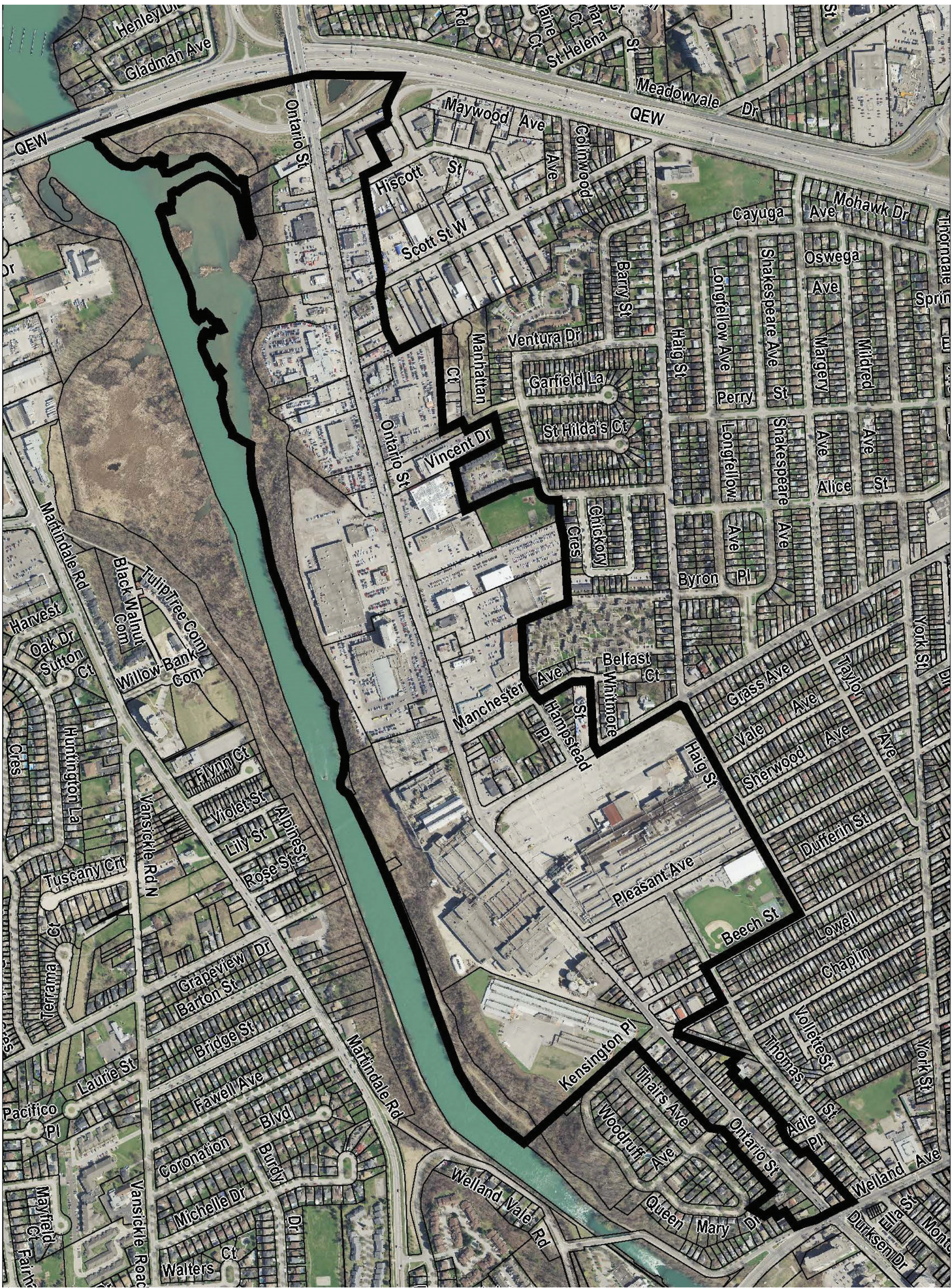
✉ OntarioStreetStudy@stcatharines.ca

Visit the project website:

🌐 engagestc.ca/OntarioStreetStudy

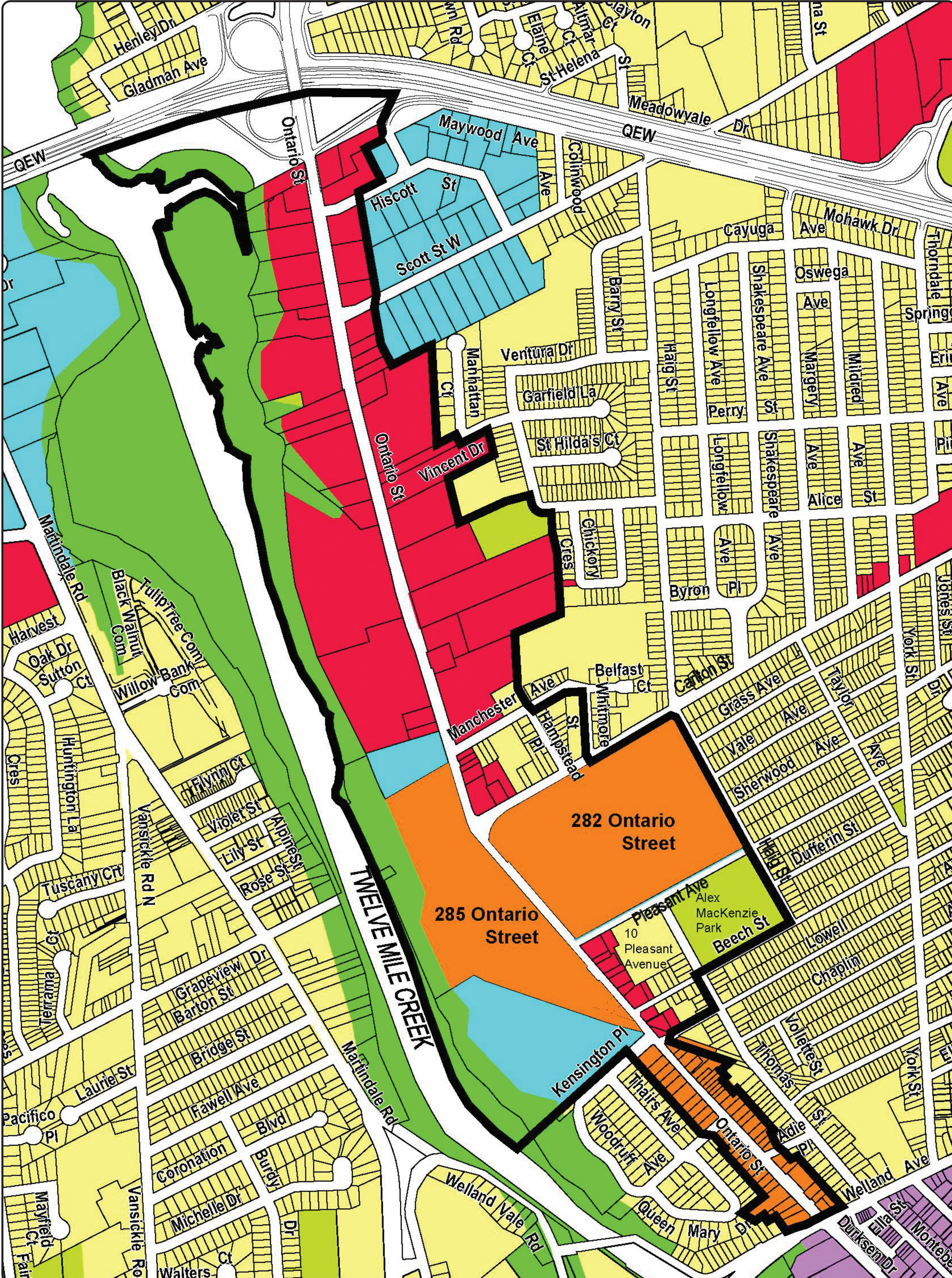
**Look out
for the next
project update
Spring 2023**

Study Area



Official Plan: General Land Use Permissions

- Neighbourhood Residential
- Commercial
- Employment
- Mixed Use
- Downtown
- Parkland and Open Space
- Natural Areas



Project Timeline

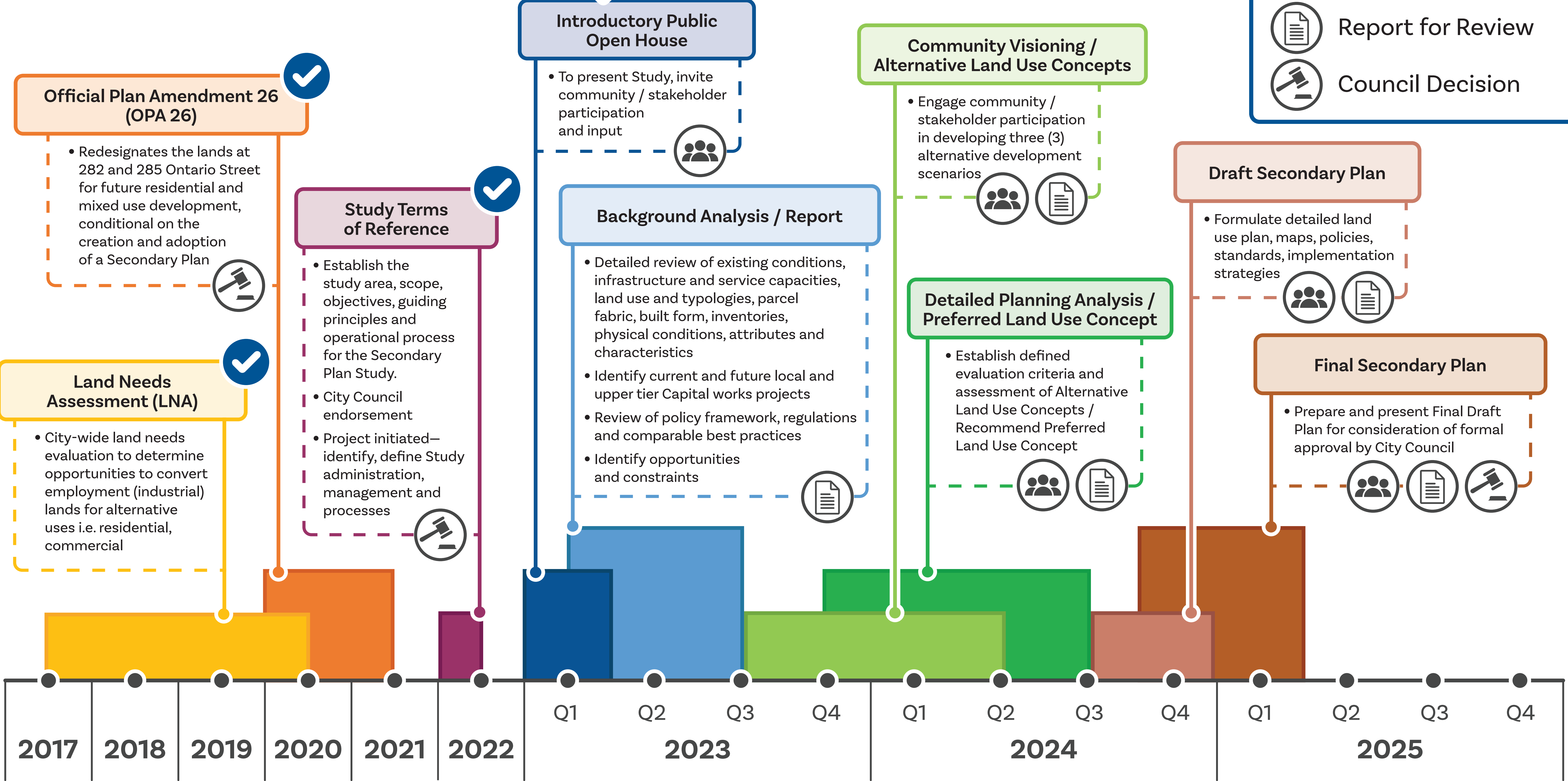


Legend

Public Engagement

Report for Review

Council Decision



Guiding Principles and Objectives

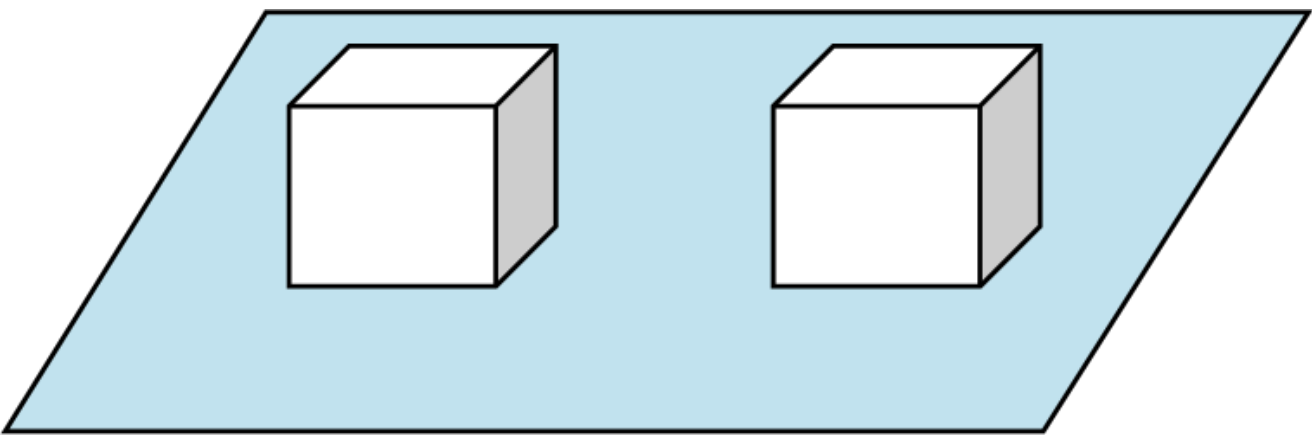


Built Form

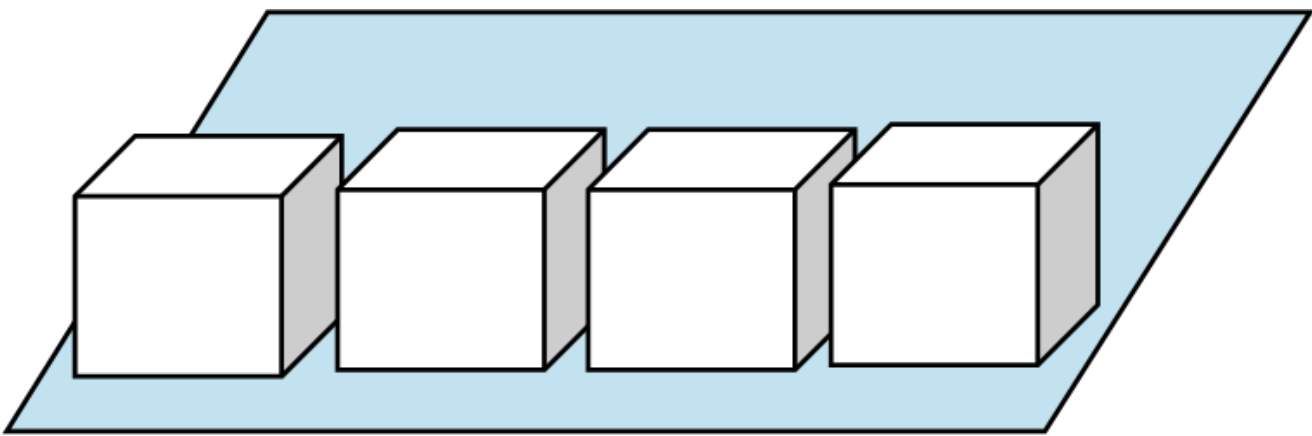
How we use space to accommodate people and jobs in the Corridor

Density

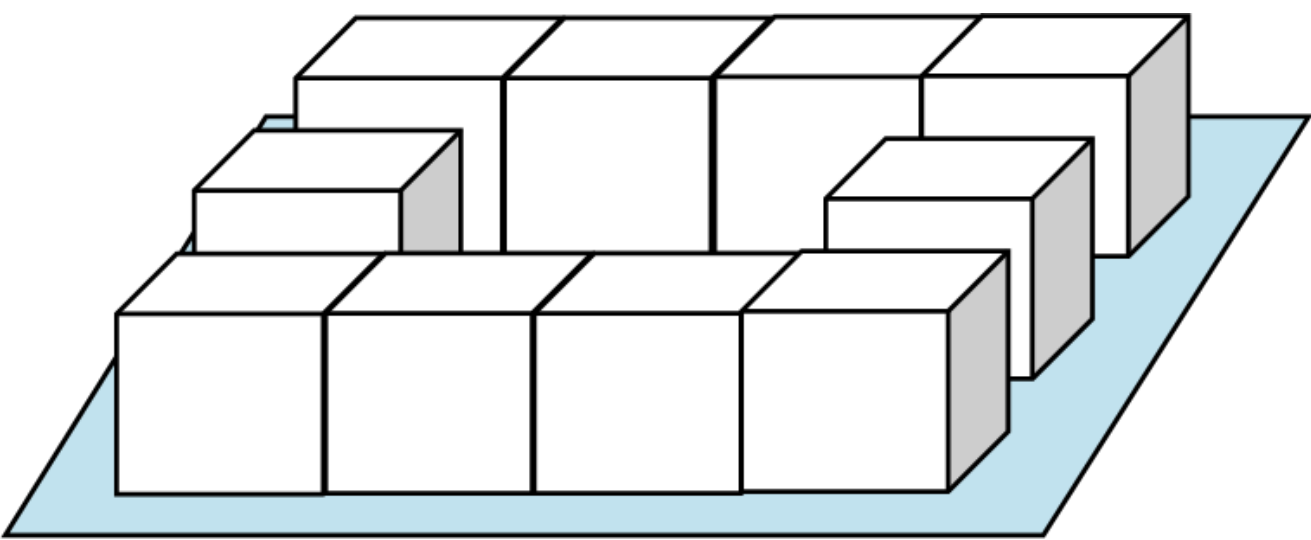
same heights, different densities



LOW (20-32 units/hectare)



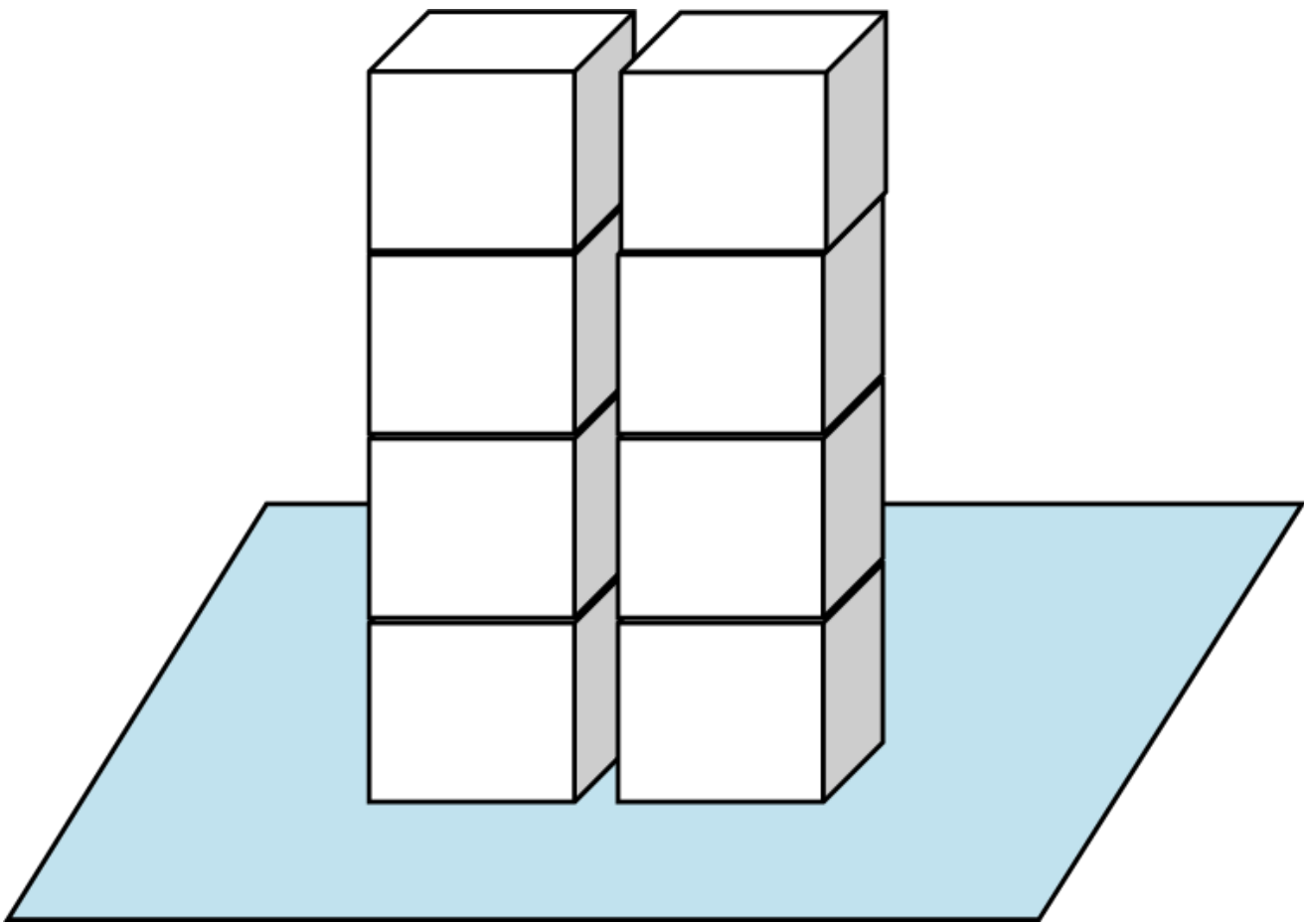
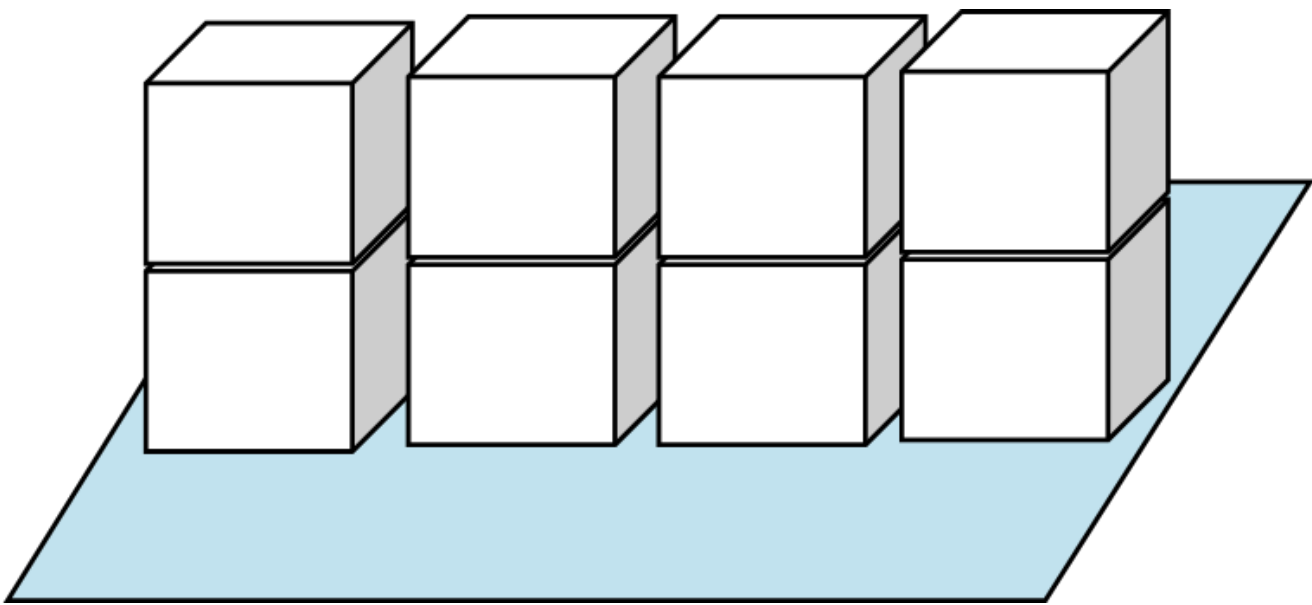
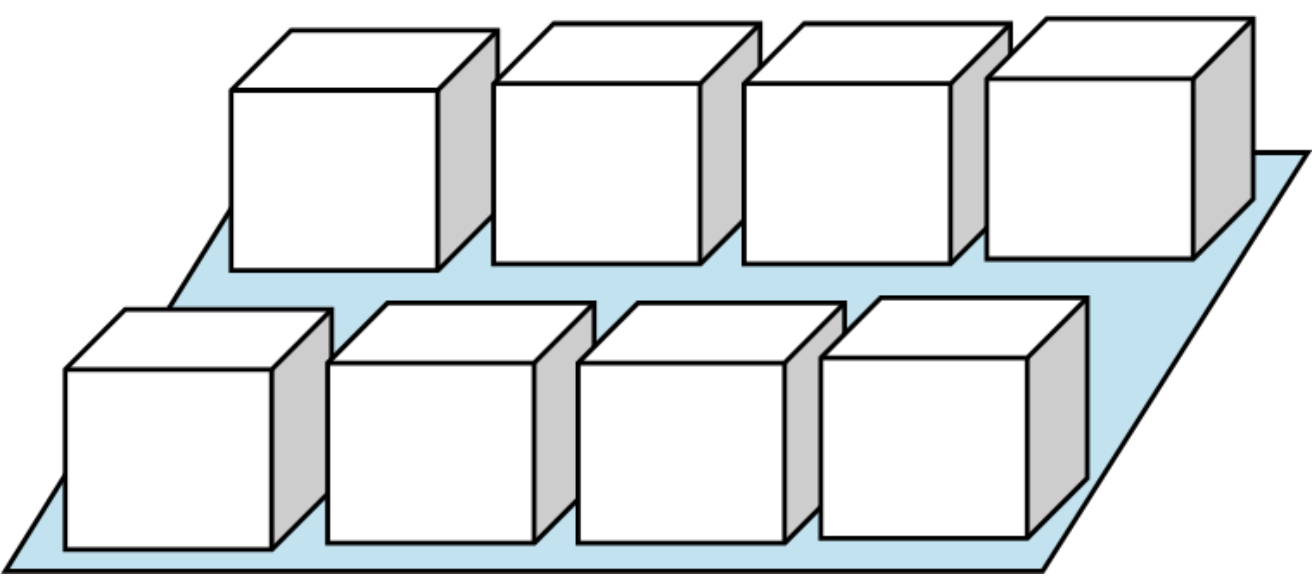
MEDIUM (25-99 units/hectare)



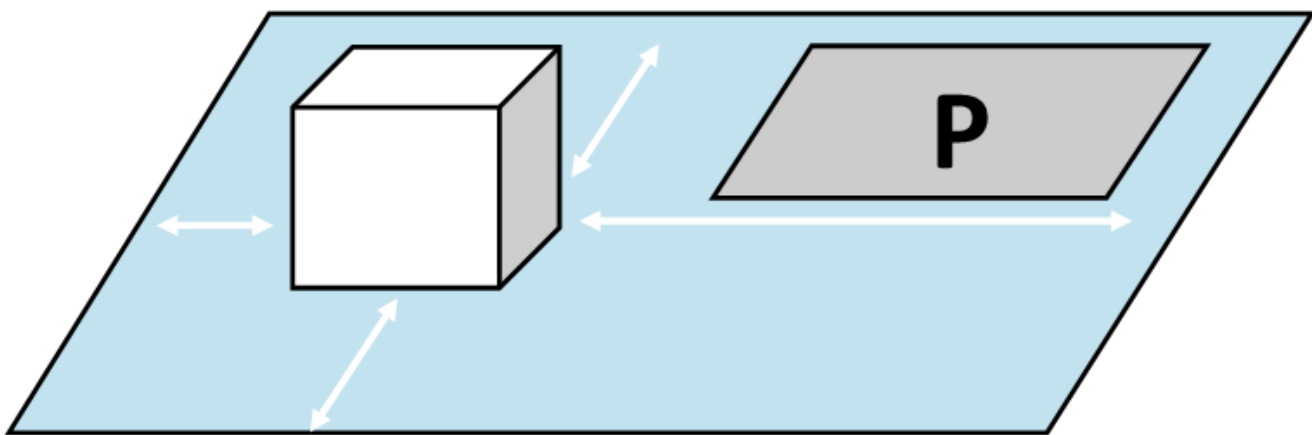
HIGH (>85 units/hectare)

Height

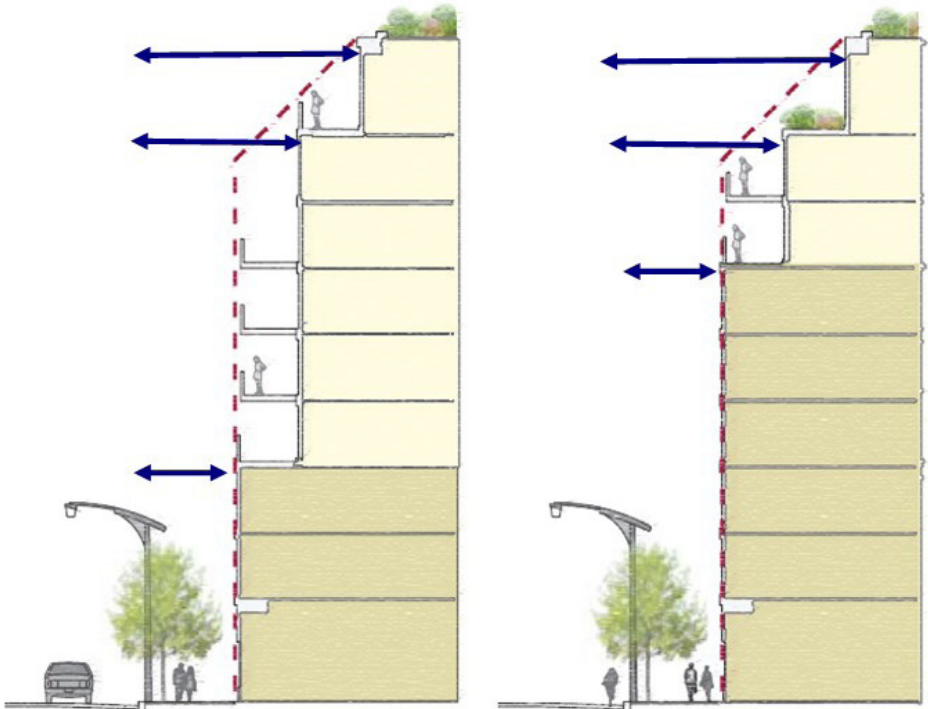
same densities, different heights



Setbacks



- From lot lines
- From streets
- Between buildings
- To parking areas



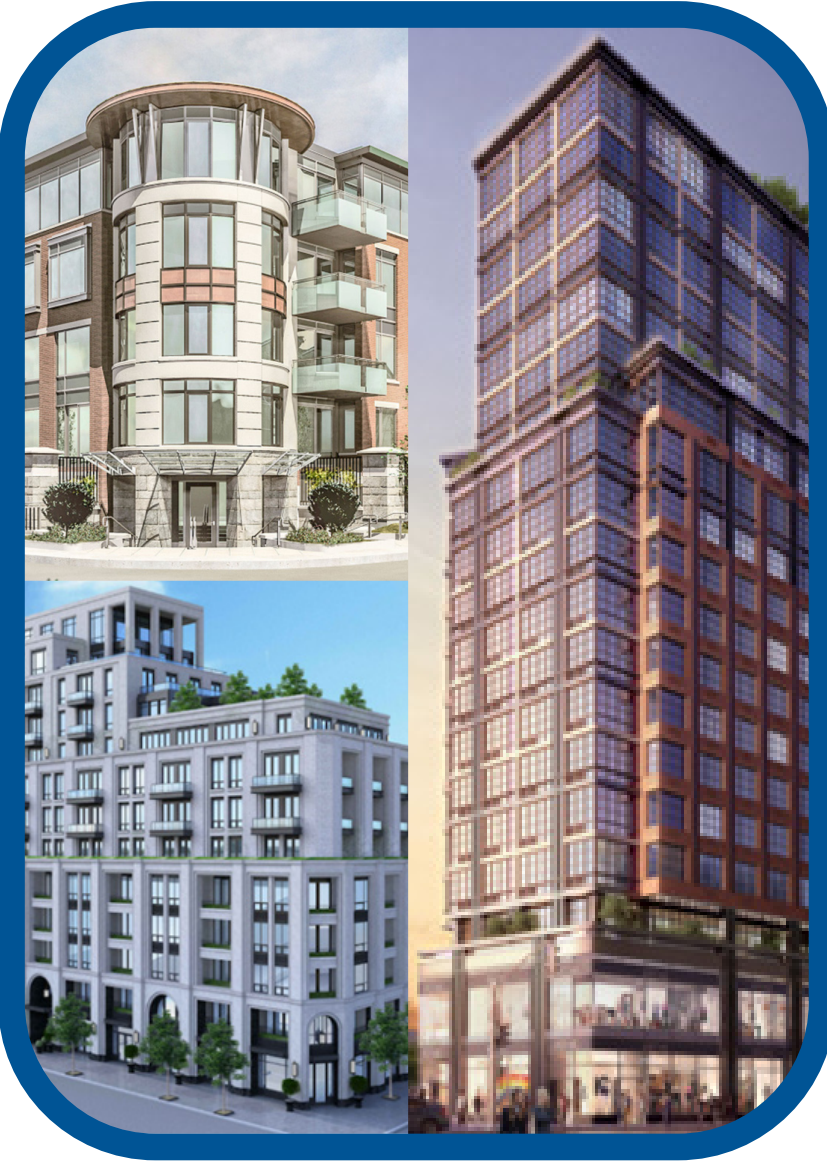
Varied setbacks based on building height

Land Use

Residential



Mixed-Use



Commercial



Natural Areas



Institutional



Employment



Parkland



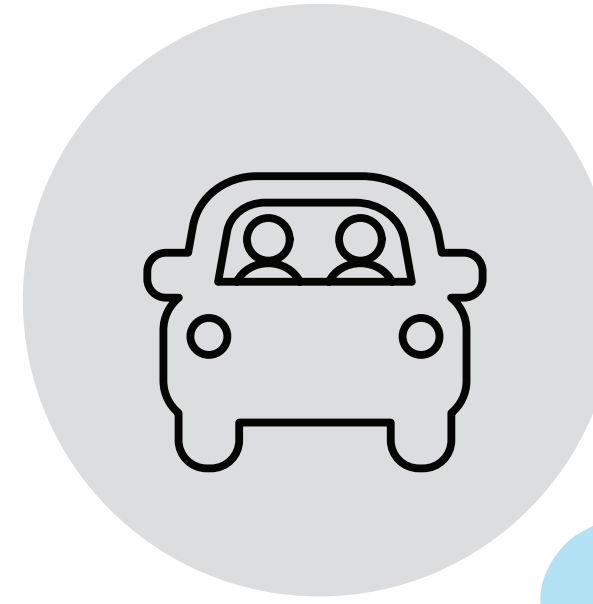
?

1. Do you have any needs or services that are not currently met by the Corridor?
2. Do you have an idea of your preferred built form, density, height and land uses for the Corridor?
3. Are there examples within the City or beyond that you would like to experience here?

Transportation Networks

How we move to, from and within the Corridor

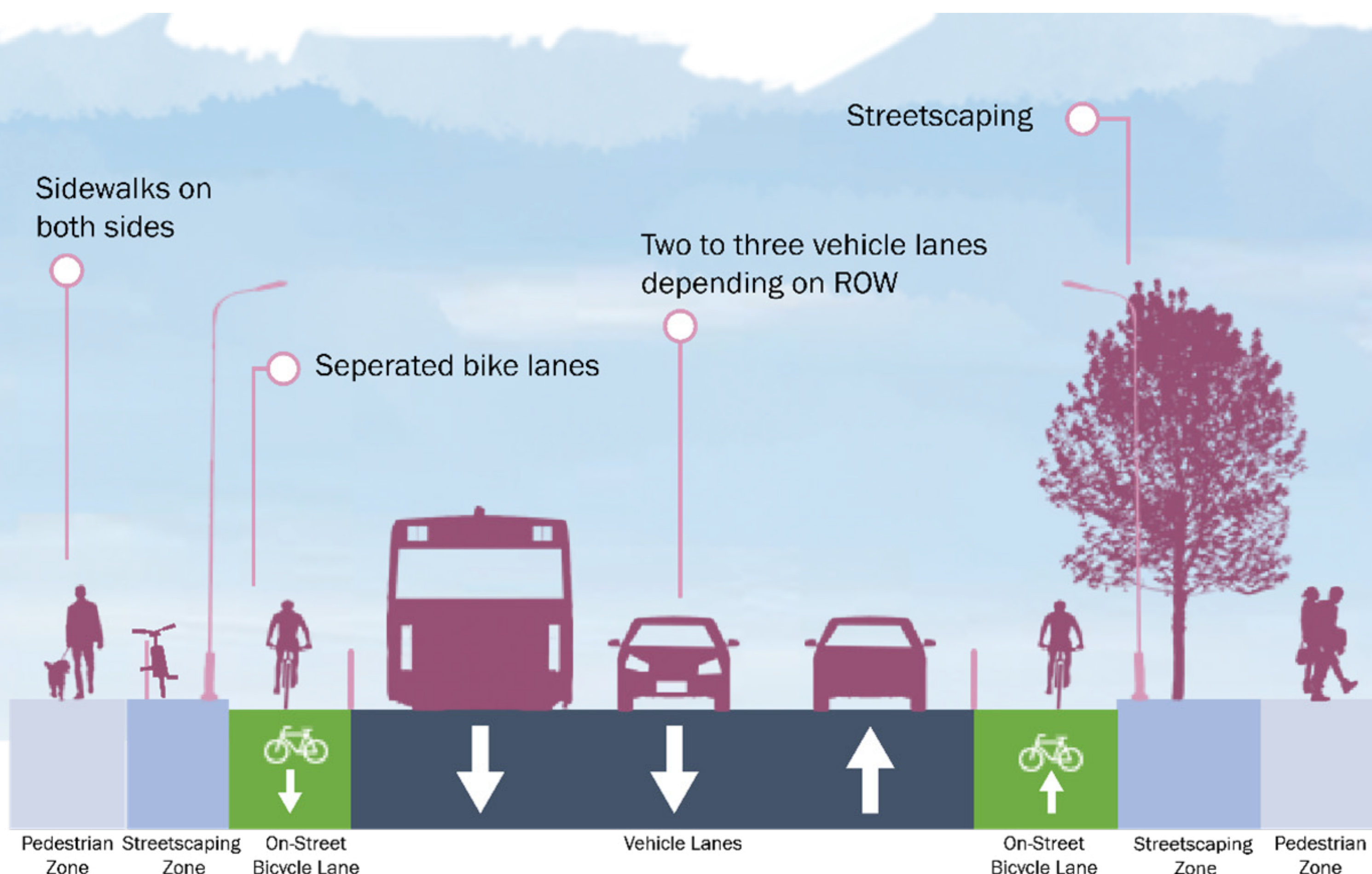
- Improve connectivity, linkages through a Complete Streets approach
- Support the sustainable and strategic movement of people and goods
- Transportation planning that is context sensitive and integrated with land use conditions
- Support enhanced greening, landscape, public realm, safety, accessibility and functionality
- Plan for multi-modal transportation infrastructure
- Establish Ontario Street as a gateway into the city, and the downtown



“A complete street is a public right-of-way where the transportation facilities and adjacent land uses are planned, designed and constructed to accommodate users of all ages and abilities including all modes.”



4. What modes of transportation do you use the most when travelling to, from and within the Corridor?
5. Currently, is there a mode of transportation you do not use as much as you would like? If so, what are the barriers preventing you from doing so?



An example of a Complete Street design

Dedicated Bicycle Lane



Greening, Urban Street Trees



Public Transit



Public Realm and Design

How we experience and identify the Corridor

The public realm informs how we view and experience space.

A combination of various design elements can be utilized to establish and enhance

community identity, highlight the local character and create a sense of place.

Some of the design tools available are illustrated here as a visual dictionary and will be explored through this study.

Active Streetscape



Architectural Interest



Vegetation and Landscaping



Benches



Gateway Features



Decorative Lighting



Public Squares and Plazas



Art Installations



Placemaking Signs



?

6. What brings you to the Corridor?
7. How would you describe the Corridor to someone who has never been there?
8. What are the negative/positive characteristics of the Corridor that impact your enjoyment and use?

Environmental Resiliency and Sustainability

How we enhance function and protect the Corridor

Service Infrastructure and Capacity

To provide for efficient, cost-effective, environmentally friendly, resilient and coordinated infrastructure investments to accommodate existing and future development opportunities and needs.

Climate Change Resiliency

To support climate change mitigation and adaptation design initiatives, including low impact developments , LEED certified design, renewable energy systems, water conservation, enhanced vegetative cover and urban canopy, and efficient land development.

Site Remediation

To support time sensitive, cost-effective, and orderly environmental remediation of 282/285 Ontario Street. The environmental evaluation and remediation of the lands is a key priority for the City.

A close-up view of a paved surface made of interlocking, porous concrete or stone tiles, designed to allow water to infiltrate the ground.

Permeable Pavement

A narrow, vegetated channel designed to collect and filter runoff water from impervious surfaces like roads and parking lots.

Bioswale

A raised garden bed with wooden borders, filled with various plants including leafy greens and small orange flowers.

Community Garden

A landscaped area with a variety of plants, including tall grasses and purple flowers, designed to capture and filter rainwater runoff from a nearby road.

Roadside Rain Garden

An aerial view of a park area featuring a large, rectangular, vegetated retention pond surrounded by walking paths and trees.

Stormwater Retention Park

A view of a flat roof covered in a dense layer of green plants and flowers, with several white HVAC units visible.

Green Roof

A view of a parking lot with several cars parked. In the foreground, there are landscaped islands with grass, small trees, and shrubs.

Green Parking Islands

?

9. What observations do you have on how the Corridor currently functions?

10. What impacts of climate change have you experienced or witnessed within the Corridor?

Natural and Heritage Features

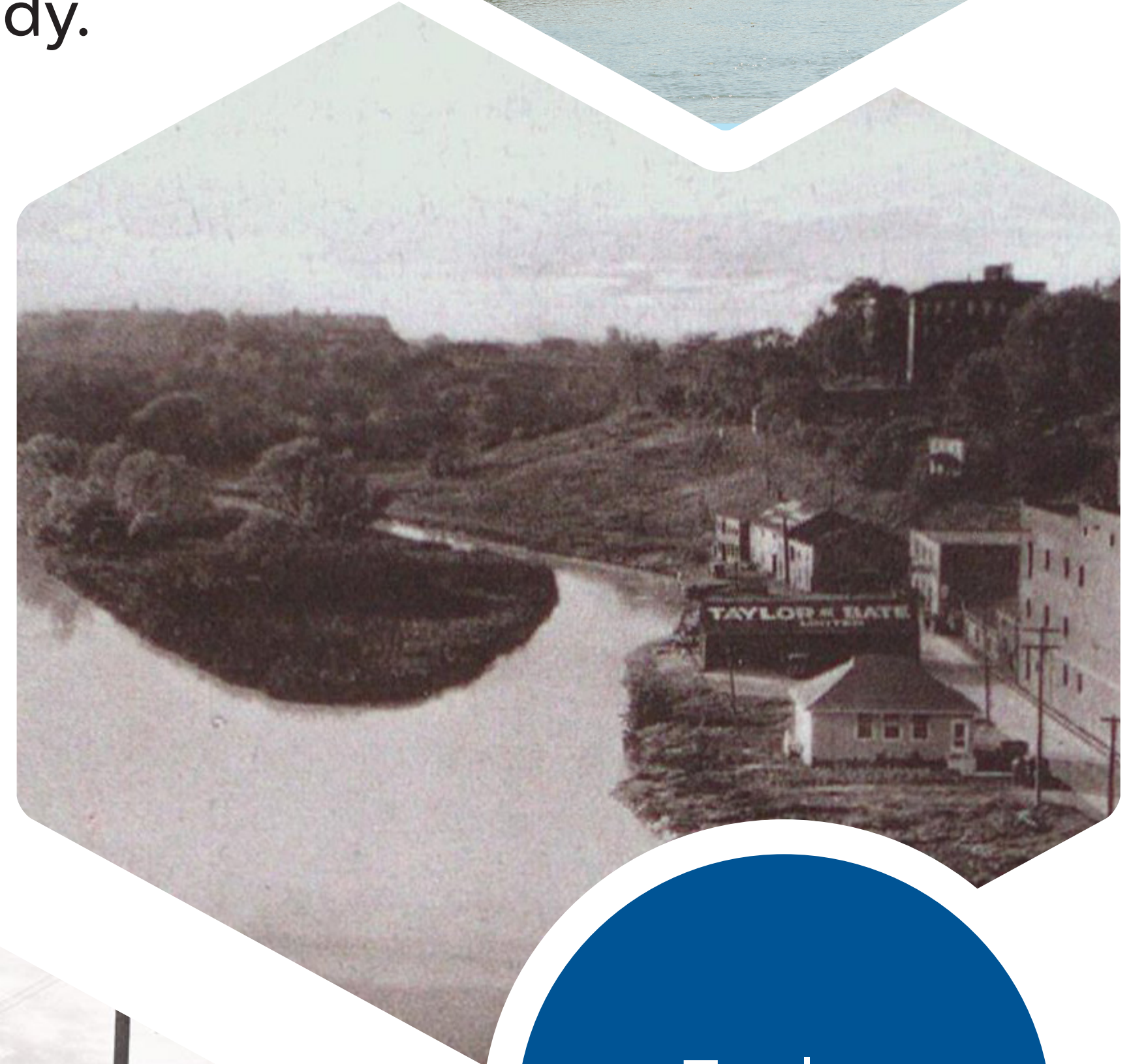
How we share and celebrate stories in the Corridor

Alex
MacKenzie
Park



The Ontario Street Corridor has helped shape the city's economic, social, cultural, and physical landscape for generations.

Protection, enhancement, integration and promotion of natural and heritage features is an important principle of this study.



Twelve
Mile Creek



Former
General
Motors Auto
Manufacturing
Facility



Haig Bowl
Arena



?

11. What features within the Corridor would you like to see celebrated or preserved?

12. Are there any stories or memories of the Corridor that you would like to share?