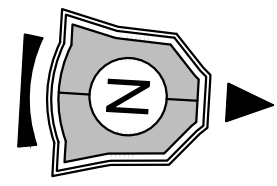
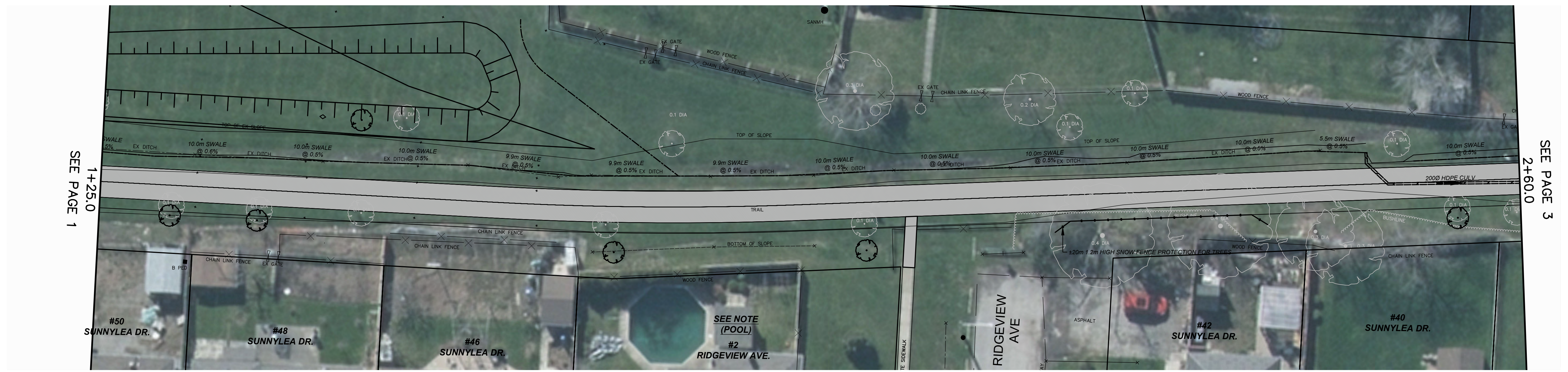
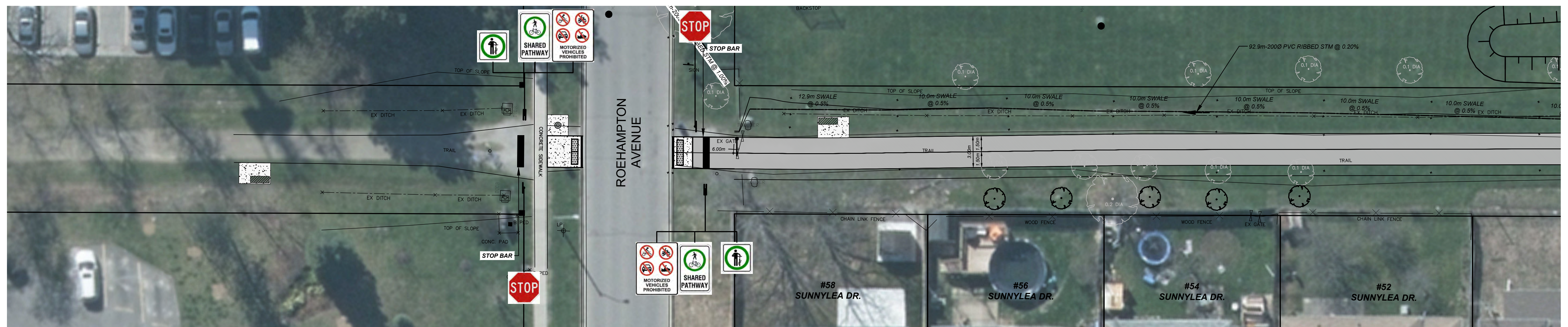


LEGEND

WV	EX WATER VALVE
HP	EX HYDRANT
CB	EX CATCHBASIN
DCB	EX DOUBLE CATCHBASIN
CBMH	EX CATCHBASIN MANHOLE
STM	EX STORM MANHOLE
SAN	EX SANITARY MANHOLE
HP O	EX HYDRO POLE
+	EX LIGHT STANDARD
100.00	EXISTING ELEVATION
100.00	PROPOSED ELEVATION
---	EX WATERMAIN
---	EX STORM SEWER
---	EX SANITARY SEWER
---	EX DITCH
---	PROPOSED DITCH
---	PROP TACTILE WARNING PLATES
---	PROP ROOT PROTECTION LIMITS
---	PROP SIGN LOCATION
○	PROP TREE RELOCATION
■	PROP ASPHALT AREA
■	PROP CONCRETE SIDEWALK
---	PROP ROADWAY ENTRANCE GATE
■	PROP CONCRETE PAD AND BENCH C/W OPTIONAL CENTER ARM INSTALLED
■	PROP CONCRETE PAD AND WASTE RECEPTACLE



SEE PAGE 1

SEE PAGE 3

SEE PAGE 2

SEE PAGE 4

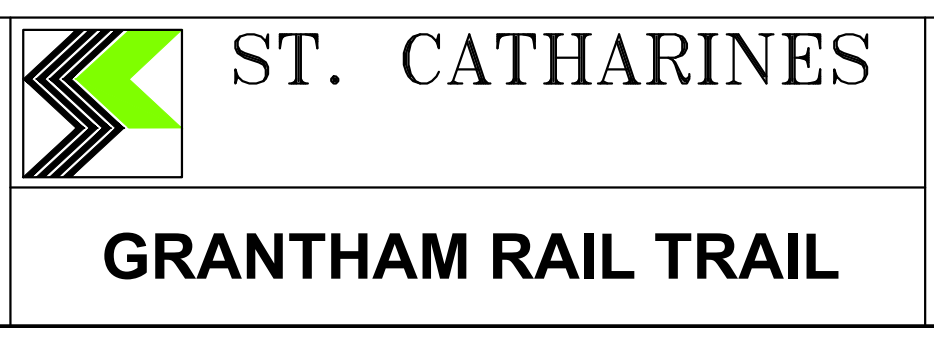
NO.	REVISION	DATE	INIT.
2	ISSUED FOR REVIEW (90%)	2022-07-08	MW
1	ISSUED FOR REVIEW (60%)	2022-06-17	MW
0	ISSUED FOR REVIEW (30%)	2022-05-25	MW

DISCLAIMER:

- THE POSITION OF THE POLE LINES, CONDUITS, WATERMAIN, SEWER AND OTHER UNDERGROUND AND ABOVE-GROUND UTILITIES AND STRUCTURES IS NOT NECESSARILY SHOWN ON THE CONSTRUCTION DRAWINGS AND WHERE SHOWN, THE ACCURACY OF THE POSITION OF SUCH UTILITIES AND STRUCTURES IS NOT GUARANTEED.
- BEFORE STARTING WORK, THE CONTRACTOR SHALL INFORM HIMSELF OF THE EXACT LOCATION OF SUCH UTILITIES AND STRUCTURES AND SHALL ASSUME ALL LIABILITY FOR DAMAGE TO THEM.
- HYDRO AND BELL POLES ARE TO BE SUPPORTED AS PER THE RESPECTIVE UTILITY REQUIREMENTS.
- ALL MANHOLE FRAMES, CATCH BASIN FRAMES, WATER VALVES AND GAS VALVES TO BE ADJUSTED TO FINISH GRADE.
- ALL PIPE SIZES ARE IN MILLIMETRES UNLESS OTHERWISE NOTED.
- ALL DIMENSIONS ARE IN METRES UNLESS OTHERWISE NOTED.
- HIGH PRIORITY FIBRE OPTIC BELL AND COGECO CABLES ARE PRESENT - USE EXTREME CAUTION.

BASE PLAN	MW
DESIGN	
CHECKED BY	

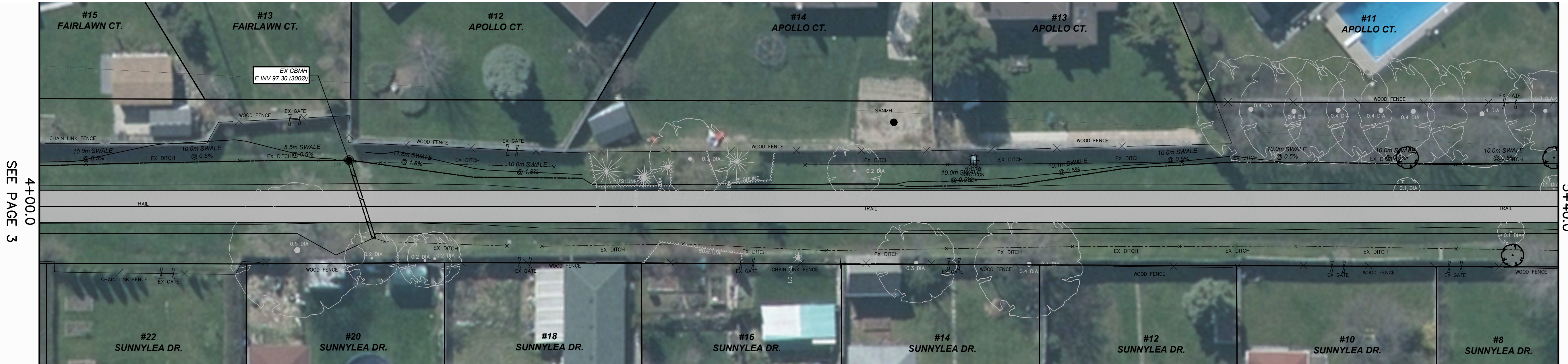
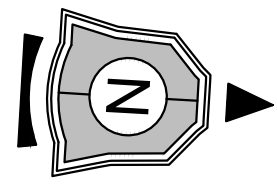
GEODETIC BENCHMARK
No. 9338022
Iron pipe with brass cap
situated on the northeast
corner of Drury Cres. and
Sunnylea Drive, 10.0m north
of centerline Drury Cres.,
9.0m east of centerline
Sunnylea Drive, 2.7m
north of street sign,
14.9m south of hydrant.
ELEVATION: 99.908m



GRANTHAM RAIL TRAIL
GRANTHAM RAIL TRAIL
Plan View
Station 0+00 to 4+00

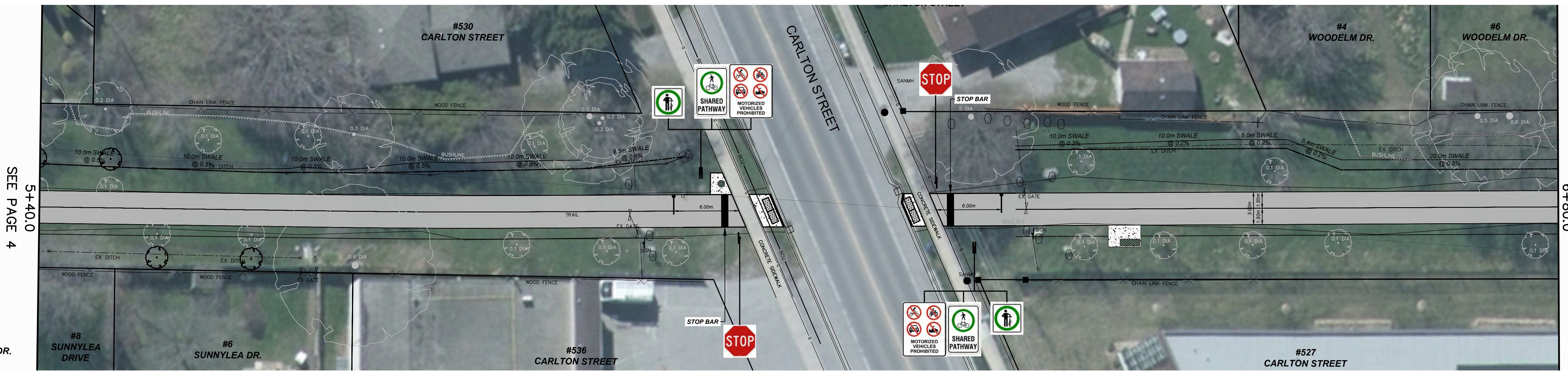
FIELD NOTES	100-
DATE	2022-07-08
SCALE	1:200
DWG.No.	
MUN.REF.No.	REV. 2

LEGEND	
WV	EX WATER VALVE
HY	EX HYDRANT
CB	EX CATCHBASIN
DCB	EX DOUBLE CATCHBASIN
CBMH	EX CATCHBASIN MANHOLE
SM	EX STORM MANHOLE
SAN	EX SANITARY MANHOLE
HP	EX HYDRO POLE
+	EX LIGHT STANDARD
100.00	EXISTING ELEVATION
100.00	PROPOSED ELEVATION
---	EX WATERMAIN
---	EX STORM SEWER
---	EX SANITARY SEWER
---	EX DITCH
---	PROPOSED DITCH
---	PROP TACTILE WARNING PLATES
---	PROP ROOT PROTECTION LIMITS
---	PROP SIGN LOCATION
---	PROP TREE RELOCATION
---	PROP ASPHALT AREA
---	PROP CONCRETE SIDEWALK
---	PROP ROADWAY ENTRANCE GATE
---	PROP CONCRETE PAD AND BENCH C/W OPTIONAL CENTER ARM INSTALLED
---	PROP CONCRETE PAD AND WASTE RECEPTACLE



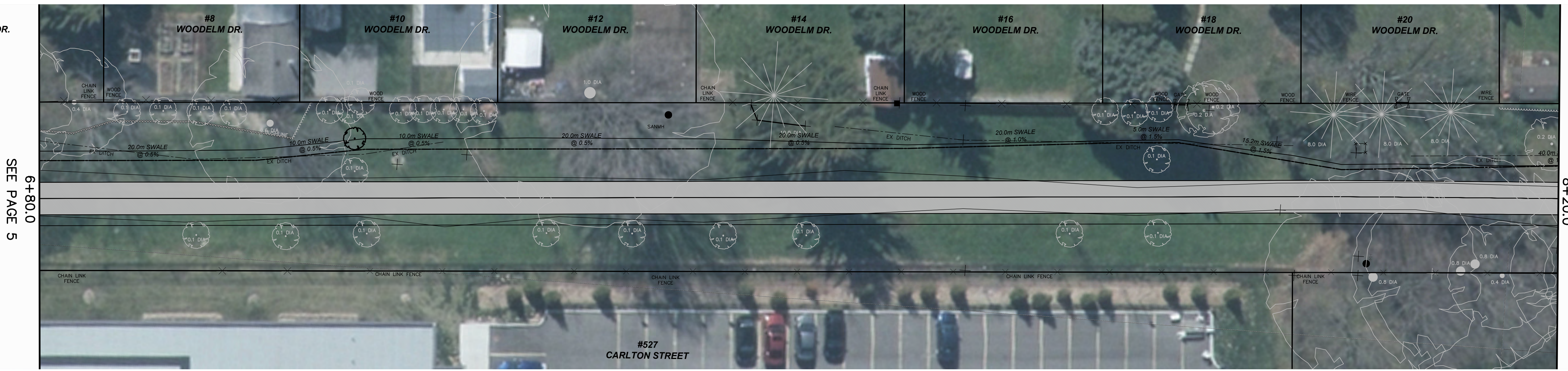
SEE PAGE 3

SEE PAGE 5



SEE PAGE 4

SEE PAGE 6



SEE PAGE 5

SEE PAGE 7

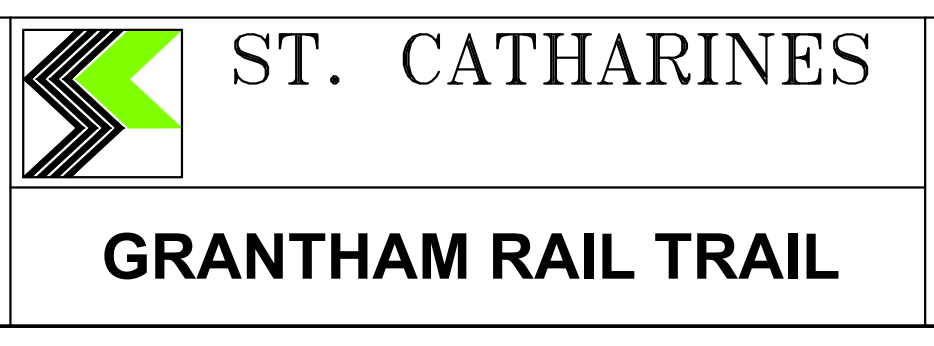
NO.	REVISION	DATE	INIT.
2	ISSUED FOR REVIEW (90%)	2022-07-08	MW
1	ISSUED FOR REVIEW (60%)	2022-06-17	MW
0	ISSUED FOR REVIEW (30%)	2022-05-25	MW

DISCLAIMER:

- THE POSITION OF THE POLE LINES, CONDUITS, WATERMAIN, SEWER AND OTHER UNDERGROUND AND ABOVE-GROUND UTILITIES AND STRUCTURES IS NOT NECESSARILY SHOWN ON THE CONSTRUCTION DRAWINGS AND WHERE SHOWN, THE ACCURACY OF THE POSITION OF SUCH UTILITIES AND STRUCTURES IS NOT GUARANTEED.
- BEFORE STARTING WORK, THE CONTRACTOR SHALL INFORM HIMSELF OF THE EXACT LOCATION OF SUCH UTILITIES AND STRUCTURES AND SHALL ASSUME ALL LIABILITY FOR DAMAGE TO THEM.
- HYDRO AND BELL POLES ARE TO BE SUPPORTED AS PER THE RESPECTIVE UTILITY REQUIREMENTS.
- ALL MANHOLE FRAMES, CATCH BASIN FRAMES, WATER VALVES AND GAS VALVES TO BE ADJUSTED TO FINISH GRADE.
- ALL PIPE SIZES ARE IN MILLIMETRES UNLESS OTHERWISE NOTED.
- ALL DIMENSIONS ARE IN METRES UNLESS OTHERWISE NOTED.
- HIGH PRIORITY FIBRE OPTIC BELL AND COSECO CABLES ARE PRESENT - USE EXTREME CAUTION.

BASE PLAN	MW
DESIGN	
CHECKED BY	

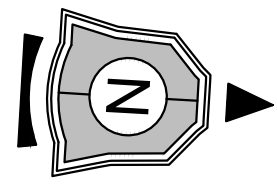
GEODETIC BENCHMARK
No. 9338022
Iron pipe with brass cap situated on the northeast corner of Drury Cres. and Sunnylea Drive, 10.0m north of centerline Drury Cres., 9.0m east of centerline Sunnylea Drive, 2.7m northeast of street sign, 14.9m south of hydrant.
ELEVATION: 99.908m



GRANTHAM RAIL TRAIL
GRANTHAM RAIL TRAIL
Plan View
Station 4+00 to 8+20

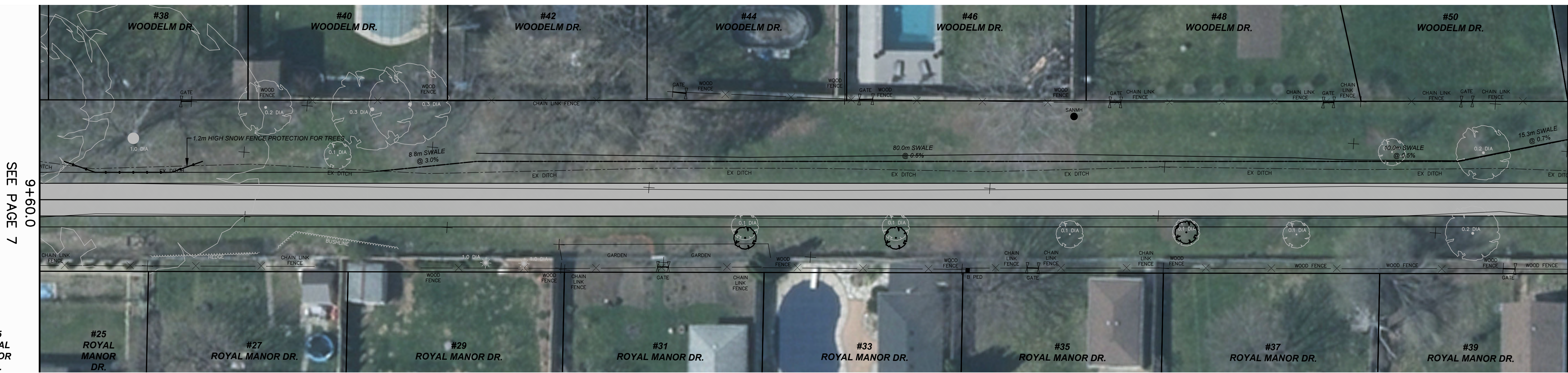
FIELD NOTES	100-
DATE	2022-07-08
SCALE	1:200
DWG.No.	
MUN.REF.No.	
REV.	2

LEGEND	
WV	EX WATER VALVE
HY	EX HYDRANT
CB	EX CATCHBASIN
DCB	EX DOUBLE CATCHBASIN
CBMH	EX CATCHBASIN MANHOLE
SM	EX STORM MANHOLE
SAN	EX SANITARY MANHOLE
HP	EX HYDRO POLE
+	EX LIGHT STANDARD
100.00	EXISTING ELEVATION
100.00	PROPOSED ELEVATION
---	EX WATERMAIN
---	EX STORM SEWER
---	EX SANITARY SEWER
---	EX DITCH
---	PROPOSED DITCH
---	PROP TACTILE WARNING PLATES
---	PROP ROOT PROTECTION LIMITS
---	PROP SIGN LOCATION
---	PROP TREE RELOCATION
---	PROP ASPHALT AREA
---	PROP CONCRETE SIDEWALK
---	PROP ROADWAY ENTRANCE GATE
---	PROP CONCRETE PAD AND BENCH C/W OPTIONAL CENTER ARM INSTALLED
---	PROP CONCRETE PAD AND WASTE RECEPTACLE



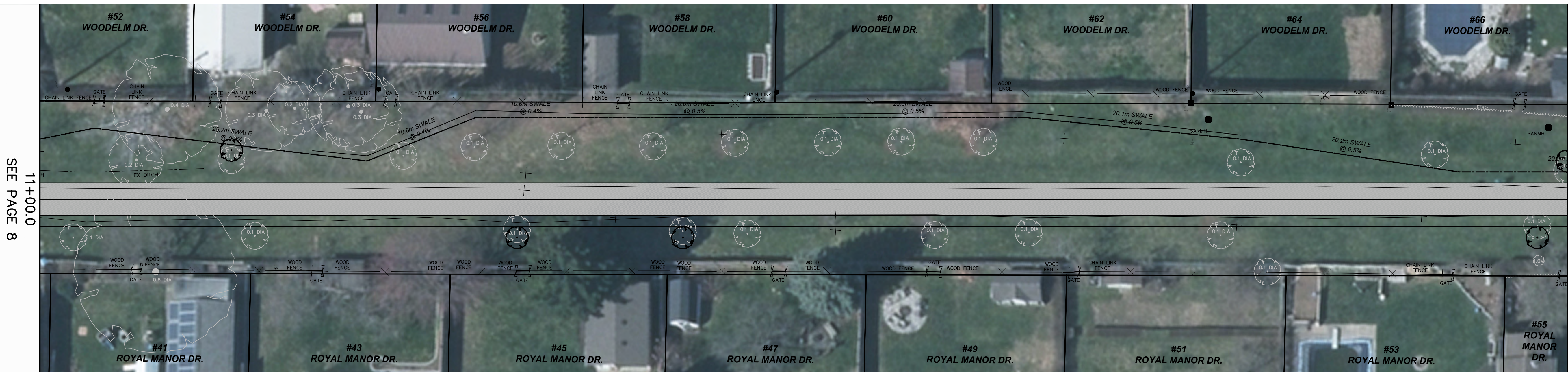
8+20.0
SEE PAGE 6

9+60.0
SEE PAGE 8



9+60.0
SEE PAGE 7

11+00.0
SEE PAGE 9



11+00.0
SEE PAGE 8

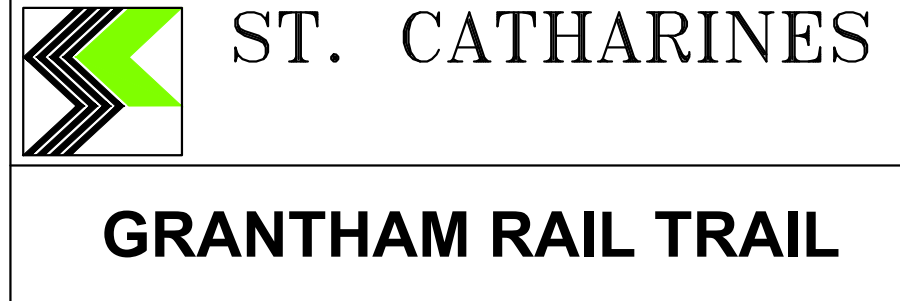
12+40.0
SEE PAGE 10

DISCLAIMER:

- THE POSITION OF THE POLE LINES, CONDUITS, WATERMAIN, SEWER AND OTHER UNDERGROUND AND ABOVE-GROUND UTILITIES AND STRUCTURES IS NOT NECESSARILY SHOWN ON THE CONSTRUCTION DRAWINGS AND WHERE SHOWN, THE ACCURACY OF THE POSITION OF SUCH UTILITIES AND STRUCTURES IS NOT GUARANTEED.
- BEFORE STARTING WORK, THE CONTRACTOR SHALL INFORM HIMSELF OF THE EXACT LOCATION OF SUCH UTILITIES AND STRUCTURES AND SHALL ASSUME ALL LIABILITY FOR DAMAGE TO THEM.
- HYDRO AND BELL POLES ARE TO BE SUPPORTED AS PER THE RESPECTIVE UTILITY REQUIREMENTS.
- ALL MANHOLE FRAMES, CATCH BASIN FRAMES, WATER VALVES AND GAS VALVES TO BE ADJUSTED TO FINISH GRADE.
- ALL PIPE SIZES ARE IN MILLIMETRES UNLESS OTHERWISE NOTED.
- ALL DIMENSIONS ARE IN METRES UNLESS OTHERWISE NOTED.
- HIGH PRIORITY FIBRE OPTIC BELL AND COSECO CABLES ARE PRESENT - USE EXTREME CAUTION.

BASE PLAN	MW
DESIGN	
CHECKED BY	

GEODETIC BENCHMARK
No. 9338022
Iron pipe with brass cap
situated on the northeast
corner of Drury Cres. and
Sunnyva Drive, 10.0m north
of centerline Drury Cres.,
9.0m east of centerline
Sunnyva Drive, 2.7m
northeast of street sign,
14.9m south of hydrant.
ELEVATION: 99.908m

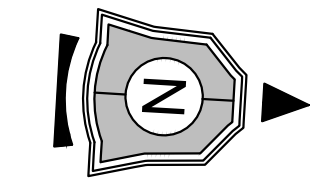


GRANTHAM RAIL TRAIL
GRANTHAM
RAIL TRAIL
Plan View
Station 8+20 to 12+40

FIELD NOTES	100-
DATE	2022-07-08
SCALE	1:200
DWG.No.	
MUN.REF.No.	
REV.	2

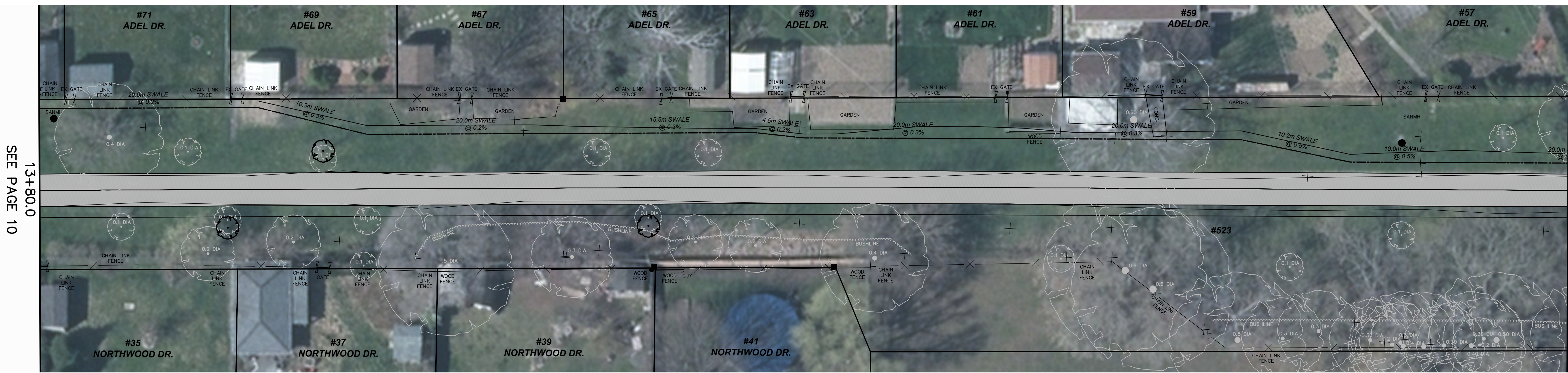
NO.	REVISION	DATE	INIT.
2	ISSUED FOR REVIEW (90%)	2022-07-08	MW
1	ISSUED FOR REVIEW (60%)	2022-06-17	MW
0	ISSUED FOR REVIEW (30%)	2022-05-25	MW

LEGEND	
WV	EX WATER VALVE
HO	EX HYDRANT
CB	EX CATCHBASIN
DCB	EX DOUBLE CATCHBASIN
CBMH	EX CATCHBASIN MANHOLE
SM	EX STORM MANHOLE
SAN	EX SANITARY MANHOLE
HP	EX HYDRO POLE
+	EX LIGHT STANDARD
100.00	EXISTING ELEVATION
100.00	PROPOSED ELEVATION
---	EX WATERMAIN
---	EX STORM SEWER
---	EX SANITARY SEWER
---	EX DITCH
---	PROPOSED DITCH
---	PROP TACTILE WARNING PLATES
---	PROP ROOT PROTECTION LIMITS
---	PROP SIGN LOCATION
---	PROP TREE RELOCATION
---	PROP ASPHALT AREA
---	PROP CONCRETE SIDEWALK
---	PROP ROADWAY ENTRANCE GATE
---	PROP CONCRETE PAD AND BENCH C/W OPTIONAL CENTER ARM INSTALLED
---	PROP CONCRETE PAD AND WASTE RECEPTACLE



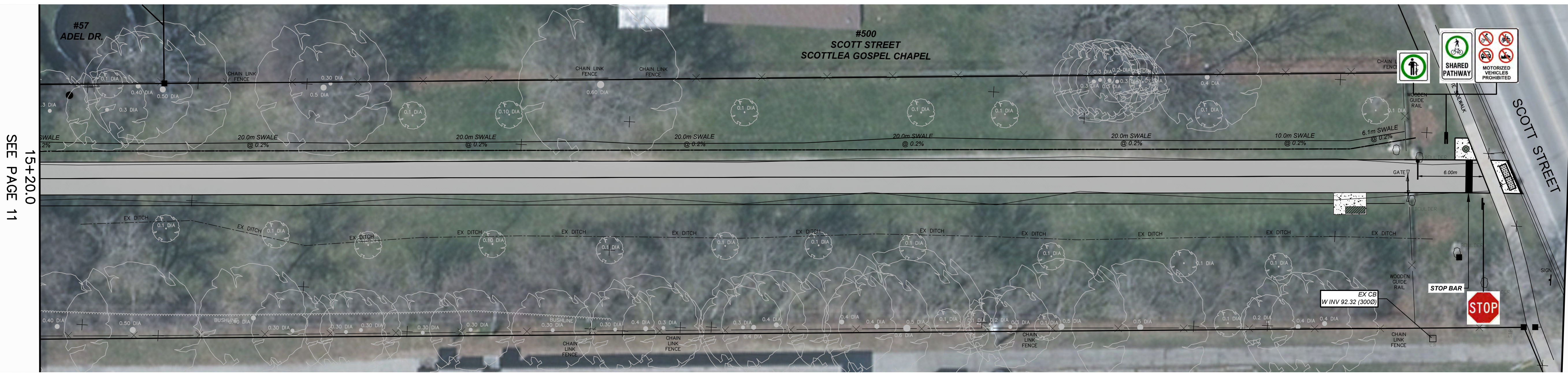
12+40.0
SEE PAGE 9

13+80.0
SEE PAGE 11



13+80.0
SEE PAGE 10

15+20.0
SEE PAGE 12



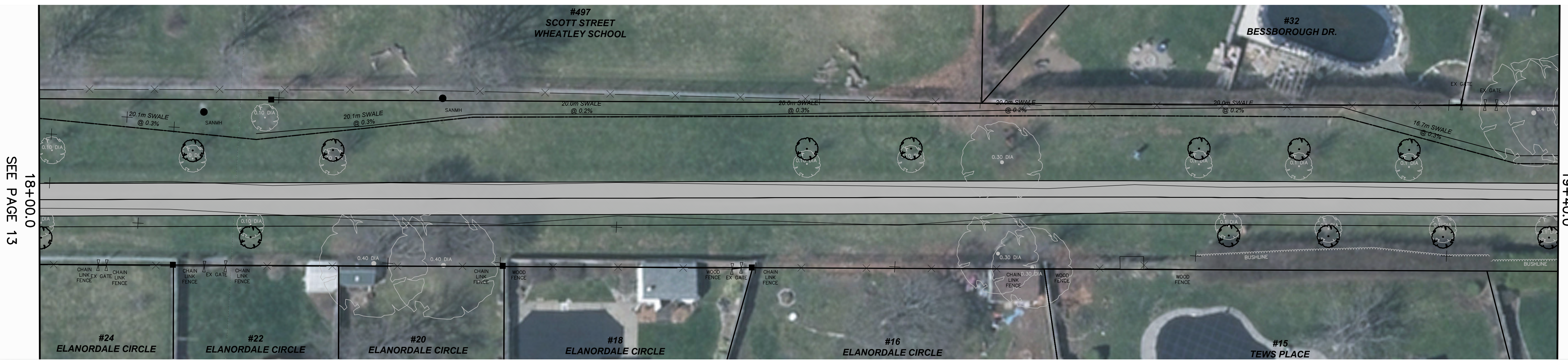
15+20.0
SEE PAGE 11

16+60.0
SEE PAGE 13

<p>DISCLAIMER:</p> <ol style="list-style-type: none"> THE POSITION OF THE POLE LINES, CONDUITS, WATERMAIN, SEWER AND OTHER UNDERGROUND AND ABOVE-GROUND UTILITIES AND STRUCTURES IS NOT NECESSARILY SHOWN ON THE CONSTRUCTION DRAWINGS AND WHERE SHOWN, THE ACCURACY OF THE POSITION OF SUCH UTILITIES AND STRUCTURES IS NOT GUARANTEED. BEFORE STARTING WORK, THE CONTRACTOR SHALL INFORM HIMSELF OF THE EXACT LOCATION OF SUCH UTILITIES AND STRUCTURES AND SHALL ASSUME ALL LIABILITY FOR DAMAGE TO THEM. HYDRO AND BELL POLES ARE TO BE SUPPORTED AS PER THE RESPECTIVE UTILITY REQUIREMENTS. ALL MANHOLE FRAMES, CATCH BASIN FRAMES, WATER VALVES AND GAS VALVES TO BE ADJUSTED TO FINISH GRADE. ALL PIPE SIZES ARE IN MILLIMETRES UNLESS OTHERWISE NOTED. ALL DIMENSIONS ARE IN METRES UNLESS OTHERWISE NOTED. HIGH PRIORITY FIBRE OPTIC BELL AND COSECO CABLES ARE PRESENT - USE EXTREME CAUTION. 			<p>BASE PLAN</p> <p>MW</p> <p>DESIGN</p> <p>CHECKED BY</p>	<p>GEODETIC BENCHMARK No. 9338022 Iron pipe with brass cap situated on the northeast corner of Drury Cres. and Sunnylea Drive, 10.0m north of centerline Drury Cres., 9.0m east of centerline Sunnylea Drive, 2.7m northeast of street sign, 14.9m south of hydrant. ELEVATION: 99.908m</p>	<p>ST. CATHARINES</p> <p>GRANTHAM RAIL TRAIL</p>	<p>GRANTHAM RAIL TRAIL</p> <p>GRANTHAM RAIL TRAIL</p> <p>Plan View</p> <p>Station 12+40 to 16+60</p>	<p>FIELD NOTES 100-</p> <p>DATE 2022-07-08</p> <p>SCALE 1:200</p> <p>DWG.No.</p> <p>MUN.REF.No.</p> <p>REV. 2</p>
---	--	--	--	---	--	--	---

NO.	REVISION	DATE	INIT.
2	ISSUED FOR REVIEW (90%)	2022-07-08	MW
1	ISSUED FOR REVIEW (60%)	2022-06-17	MW
0	ISSUED FOR REVIEW (30%)	2022-05-25	MW

LEGEND	
WV	EX WATER VALVE
HD	EX HYDRANT
CB	EX CATCHBASIN
DCB	EX DOUBLE CATCHBASIN
CBMH	EX CATCHBASIN MANHOLE
SM	EX STORM MANHOLE
SAN	EX SANITARY MANHOLE
HP	EX HYDRO POLE
+	EX LIGHT STANDARD
100.00	EXISTING ELEVATION
700.00	PROPOSED ELEVATION
---	EX WATERMAIN
---	EX STORM SEWER
---	EX SANITARY SEWER
---	EX DITCH
---	PROPOSED DITCH
---	PROP TACTILE WARNING PLATES
---	PROP ROOT PROTECTION LIMITS
---	PROP SIGN LOCATION
○	PROP TREE RELOCATION
■	PROP ASPHALT AREA
■	PROP CONCRETE SIDEWALK
■	PROP ROADWAY ENTRANCE GATE
■	PROP CONCRETE PAD AND BENCH C/W OPTIONAL CENTER ARM INSTALLED
■	PROP CONCRETE PAD AND WASTE RECEPTACLE



SEE PAGE 14
18+00.0
ELAN

SEE PAGE 15
19+40.0
B

SEE PAGE 16
20+80.0
FOXGI

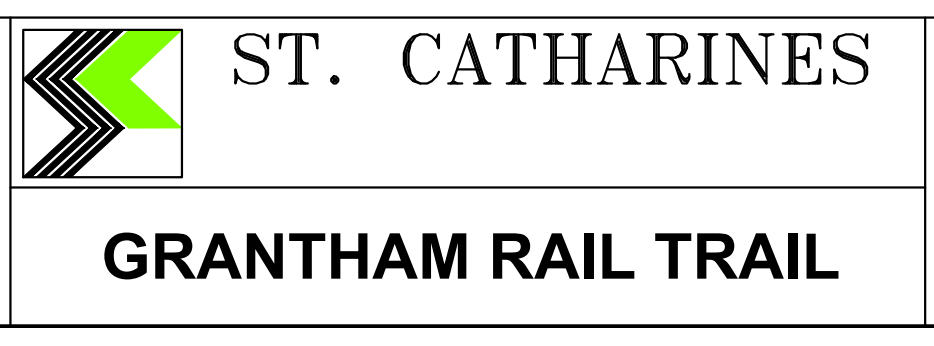
NO.	REVISION	DATE	INIT.
2	ISSUED FOR REVIEW (90%)	2022-07-08	MW
1	ISSUED FOR REVIEW (60%)	2022-06-17	MW
0	ISSUED FOR REVIEW (30%)	2022-05-25	MW

DISCLAIMER:

- THE POSITION OF THE POLE LINES, CONDUITS, WATERMAIN, SEWER AND OTHER UNDERGROUND AND ABOVE-GROUND UTILITIES AND STRUCTURES IS NOT NECESSARILY SHOWN ON THE CONSTRUCTION DRAWINGS AND WHERE SHOWN, THE ACCURACY OF THE POSITION OF SUCH UTILITIES AND STRUCTURES IS NOT GUARANTEED.
- BEFORE STARTING WORK, THE CONTRACTOR SHALL INFORM HIMSELF OF THE EXACT LOCATION OF SUCH UTILITIES AND STRUCTURES AND SHALL ASSUME ALL LIABILITY FOR DAMAGE TO THEM.
- HYDRO AND BELL POLES ARE TO BE SUPPORTED AS PER THE RESPECTIVE UTILITY REQUIREMENTS.
- ALL MANHOLE FRAMES, CATCH BASIN FRAMES, WATER VALVES AND GAS VALVES TO BE ADJUSTED TO FINISH GRADE.
- ALL PIPE SIZES ARE IN MILLIMETRES UNLESS OTHERWISE NOTED.
- ALL DIMENSIONS ARE IN METRES UNLESS OTHERWISE NOTED.
- HIGH PRIORITY FIBRE OPTIC BELL AND COSECO CABLES ARE PRESENT - USE EXTREME CAUTION.

BASE PLAN	MW
DESIGN	
CHECKED BY	

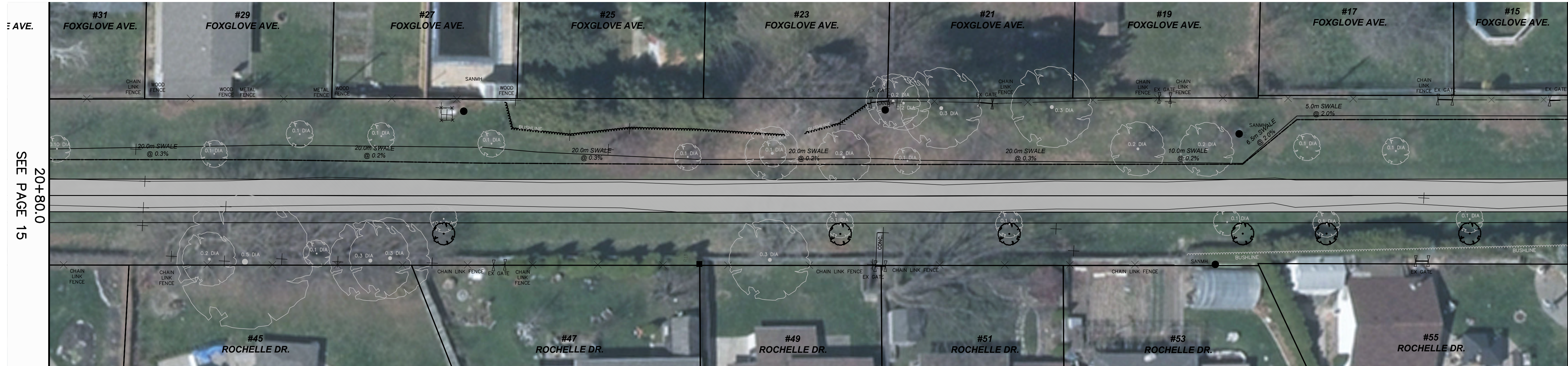
GEODETIC BENCHMARK
No. 9338022
Iron pipe with brass cap
situated on the northeast
corner of Drury Cres. and
Sunnylea Drive, 10.0m north
of centerline Drury Cres.,
9.0m east of centerline
Sunnylea Drive, 2.7m
northeast of street sign,
14.9m south of hydrant.
ELEVATION: 99.908m



GRANTHAM RAIL TRAIL
GRANTHAM RAIL TRAIL
Plan View
Station 16+60 to 20+80

FIELD NOTES	100-
DATE	2022-07-08
SCALE	1:200
DWG.No.	
MUN.REF.No.	
REV.	2

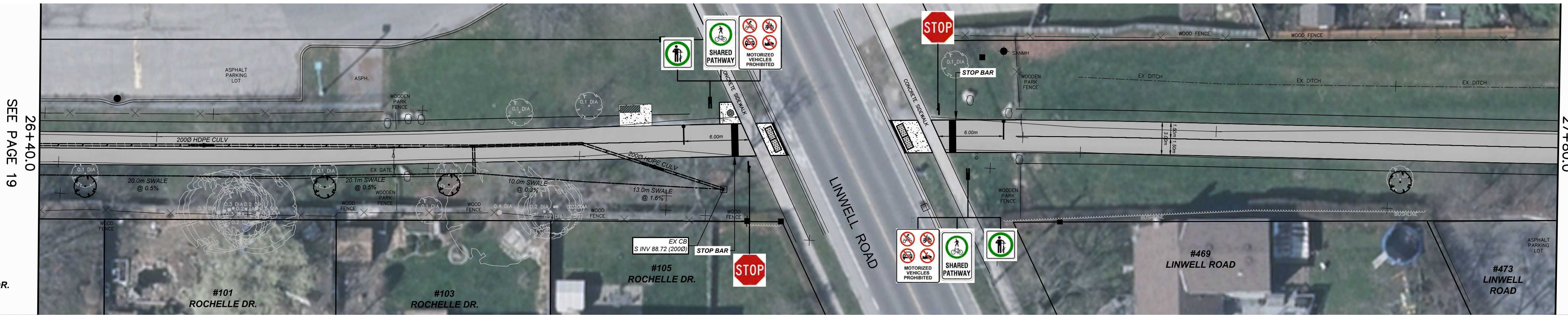
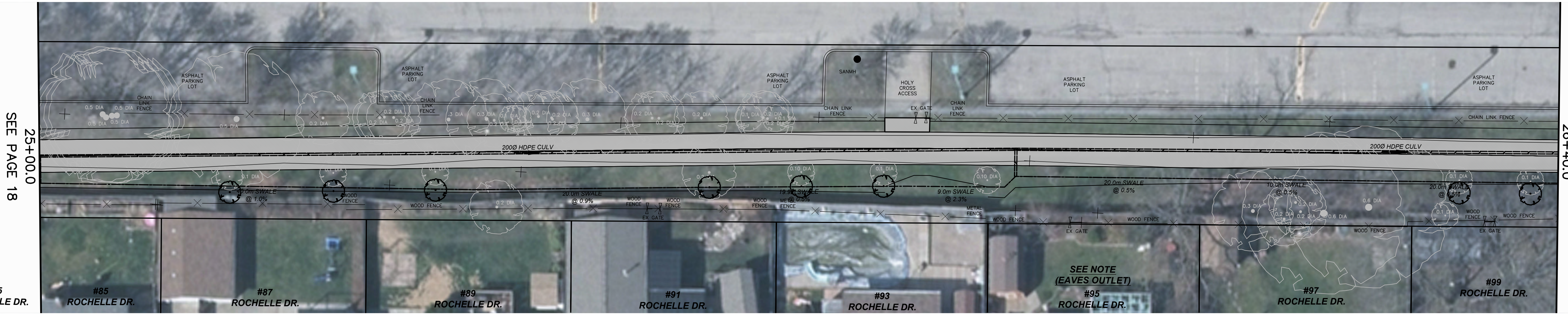
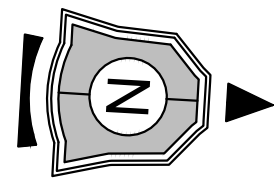
LEGEND	
WV	EX WATER VALVE
HY	EX HYDRANT
CB	EX CATCHBASIN
DCB	EX DOUBLE CATCHBASIN
CBMH	EX CATCHBASIN MANHOLE
SM	EX STORM MANHOLE
SAN	EX SANITARY MANHOLE
HP	EX HYDRO POLE
+	EX LIGHT STANDARD
100.00	EXISTING ELEVATION
700.00	PROPOSED ELEVATION
---	EX WATERMAIN
---	EX STORM SEWER
---	EX SANITARY SEWER
---	EX DITCH
---	PROPOSED DITCH
---	PROP TACTILE WARNING PLATES
---	PROP ROOT PROTECTION LIMITS
---	PROP SIGN LOCATION
---	PROP TREE RELOCATION
---	PROP ASPHALT AREA
---	PROP CONCRETE SIDEWALK
---	PROP ROADWAY ENTRANCE GATE
---	PROP CONCRETE PAD AND BENCH C/W OPTIONAL CENTER ARM INSTALLED
---	PROP CONCRETE PAD AND WASTE RECEPTACLE



<p>DISCLAIMER:</p> <ol style="list-style-type: none"> THE POSITION OF THE POLE LINES, CONDUITS, WATERMAIN, SEWER AND OTHER UNDERGROUND AND ABOVE-GROUND UTILITIES AND STRUCTURES IS NOT NECESSARILY SHOWN ON THE CONSTRUCTION DRAWINGS AND WHERE SHOWN, THE ACCURACY OF THE POSITION OF SUCH UTILITIES AND STRUCTURES IS NOT GUARANTEED. BEFORE STARTING WORK, THE CONTRACTOR SHALL INFORM HIMSELF OF THE EXACT LOCATION OF SUCH UTILITIES AND STRUCTURES AND SHALL ASSUME ALL LIABILITY FOR DAMAGE TO THEM. HYDRO AND BELL POLES ARE TO BE SUPPORTED AS PER THE RESPECTIVE UTILITY REQUIREMENTS. ALL MANHOLE FRAMES, CATCH BASIN FRAMES, WATER VALVES AND GAS VALVES TO BE ADJUSTED TO FINISH GRADE. ALL PIPE SIZES ARE IN MILLIMETRES UNLESS OTHERWISE NOTED. ALL DIMENSIONS ARE IN METRES UNLESS OTHERWISE NOTED. HIGH PRIORITY FIBRE OPTIC BELL AND COGECO CABLES ARE PRESENT - USE EXTREME CAUTION. 			<p>BASE PLAN</p> <p>MW</p> <p>DESIGN</p> <p>CHECKED BY</p>	<p>GEODETIC BENCHMARK No. 9338022 Iron pipe with brass cap situated on the northeast corner of Drury Cres. and Sunjaya Drive, 10.0m north of centerline Drury Cres., 9.0m east of centerline Sunjaya Drive, 2.7m northeast of street sign, 14.9m south of hydrant. ELEVATION: 99.908m</p>	<p>ST. CATHARINES</p> <p>GRANTHAM RAIL TRAIL</p>	<p>GRANTHAM RAIL TRAIL</p> <p>GRANTHAM RAIL TRAIL</p> <p>Plan View</p> <p>Station 20+80 to 25+00</p>	<p>FIELD NOTES 100-</p> <p>DATE 2022-07-08</p> <p>SCALE 1:200</p> <p>DWG.No.</p> <p>MUN.REF.No.</p> <p>REV. 2</p>
---	--	--	--	---	--	--	---

NO.	REVISION	DATE	INIT.
2	ISSUED FOR REVIEW (90%)	2022-07-08	MW
1	ISSUED FOR REVIEW (60%)	2022-06-17	MW
0	ISSUED FOR REVIEW (30%)	2022-05-25	MW

LEGEND	
WV	EX WATER VALVE
HY	EX HYDRANT
CB	EX CATCHBASIN
DCB	EX DOUBLE CATCHBASIN
CBMH	EX CATCHBASIN MANHOLE
SM	EX STORM MANHOLE
SAN	EX SANITARY MANHOLE
HP	EX HYDRO POLE
+	EX LIGHT STANDARD
+	EXISTING ELEVATION
+	PROPOSED ELEVATION
---	EX WATERMAIN
---	EX STORM SEWER
---	EX SANITARY SEWER
---	EX DITCH
---	PROPOSED DITCH
---	PROP TACTILE WARNING PLATES
---	PROP ROOT PROTECTION LIMITS
---	PROP SIGN LOCATION
○	PROP TREE RELOCATION
■	PROP ASPHALT AREA
■	PROP CONCRETE SIDEWALK
■	PROP ROADWAY ENTRANCE GATE
■	PROP CONCRETE PAD AND BENCH C/W OPTIONAL CENTER ARM INSTALLED
■	PROP CONCRETE PAD AND WASTE RECEPTACLE



25+00.0
SEE PAGE 18

26+40.0
SEE PAGE 20

26+40.0
SEE PAGE 19

27+80.0
SEE PAGE 21

27+80.0
SEE PAGE 20

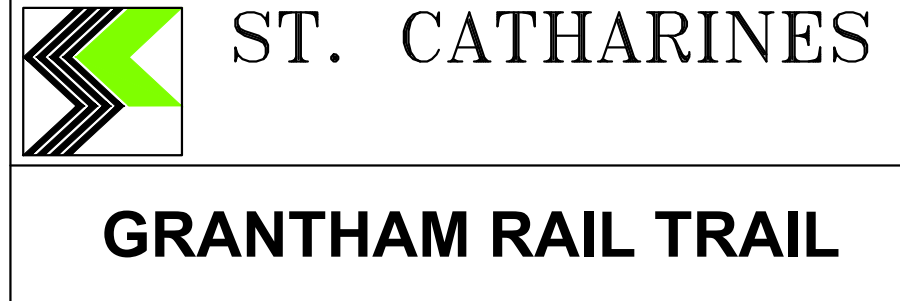
29+20.0
SEE PAGE 22

DISCLAIMER:
1. THE POSITION OF THE POLE LINES, CONDUITS, WATERMAIN, SEWER AND OTHER UNDERGROUND AND ABOVE-GROUND UTILITIES AND STRUCTURES IS NOT NECESSARILY SHOWN ON THE CONSTRUCTION DRAWINGS AND WHERE SHOWN, THE ACCURACY OF THE POSITION OF SUCH UTILITIES AND STRUCTURES IS NOT GUARANTEED.
2. BEFORE STARTING WORK, THE CONTRACTOR SHALL INFORM HIMSELF OF THE EXACT LOCATION OF SUCH UTILITIES AND STRUCTURES AND SHALL ASSUME ALL LIABILITY FOR DAMAGE TO THEM.

3. HYDRO AND BELL POLES ARE TO BE SUPPORTED AS PER THE RESPECTIVE UTILITY REQUIREMENTS.
4. ALL MANHOLE FRAMES, CATCH BASIN FRAMES, WATER VALVES AND GAS VALVES TO BE ADJUSTED TO FINISH GRADE.
5. ALL PIPE SIZES ARE IN MILLIMETRES UNLESS OTHERWISE NOTED.
6. ALL DIMENSIONS ARE IN METRES UNLESS OTHERWISE NOTED.
7. HIGH PRIORITY FIBRE OPTIC BELL AND COGECO CABLES ARE PRESENT - USE EXTREME CAUTION.

BASE PLAN	MW
DESIGN	
CHECKED BY	

GEODETIC BENCHMARK
No. 9338022
Iron pipe with brass cap
situated on the northeast
corner of Drury Cres. and
Sunnylea Drive, 10.0m north
of centerline Drury Cres.,
9.0m east of centerline
Sunnylea Drive, 2.7m
northeast of street sign,
14.9m south of hydrant.
ELEVATION: 99.908m



GRANTHAM RAIL TRAIL
GRANTHAM
RAIL TRAIL
Plan View
Station 25+00 to 29+20

FIELD NOTES	100-
DATE	2022-07-08
SCALE	1:200
DWG.No.	
MUN.REF.No.	
REV.	2

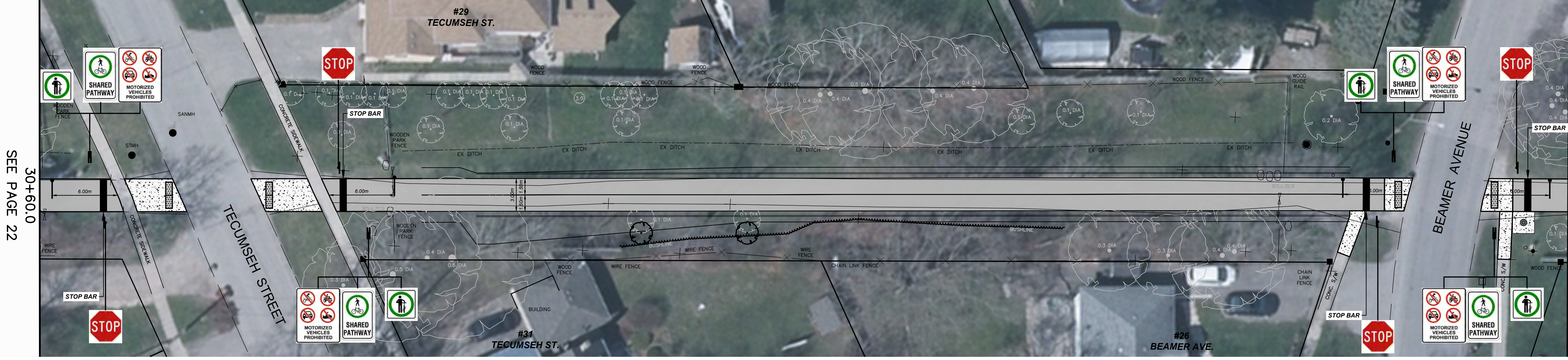
NO.	REVISION	DATE	INIT.
2	ISSUED FOR REVIEW (90%)	2022-07-08	MW
1	ISSUED FOR REVIEW (60%)	2022-06-17	MW
0	ISSUED FOR REVIEW (30%)	2022-05-25	MW

LEGEND	
WV	EX WATER VALVE
HY	EX HYDRANT
CB	EX CATCHBASIN
DCB	EX DOUBLE CATCHBASIN
CBMH	EX CATCHBASIN MANHOLE
SM	EX STORM MANHOLE
SAN	EX SANITARY MANHOLE
HP	EX HYDRO POLE
+	EX LIGHT STANDARD
+	EXISTING ELEVATION
700.00	PROPOSED ELEVATION
---	EX WATERMAIN
---	EX STORM SEWER
---	EX SANITARY SEWER
---	EX DITCH
---	PROPOSED DITCH
---	PROP TACTILE WARNING PLATES
---	PROP ROOT PROTECTION LIMITS
---	PROP SIGN LOCATION
---	PROP TREE RELOCATION
---	PROP ASPHALT AREA
---	PROP CONCRETE SIDEWALK
---	PROP ROADWAY ENTRANCE GATE
---	PROP CONCRETE PAD AND BENCH C/W OPTIONAL CENTER ARM INSTALLED
---	PROP CONCRETE PAD AND WASTE RECEPTACLE



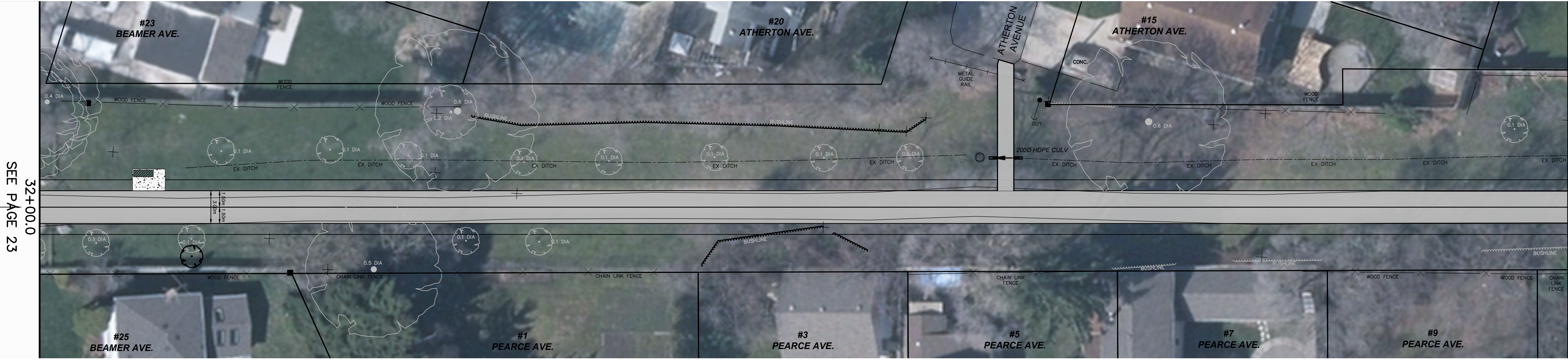
SEE PAGE 21

SEE PAGE 23



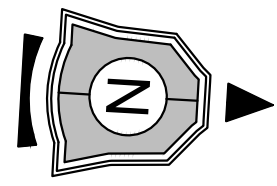
SEE PAGE 22

SEE PAGE 24



SEE PAGE 23

SEE PAGE 25



NO.	REVISION	DATE	INIT.
2	ISSUED FOR REVIEW (90%)	2022-07-08	MW
1	ISSUED FOR REVIEW (60%)	2022-06-17	MW
0	ISSUED FOR REVIEW (30%)	2022-05-25	MW

DISCLAIMER:

- THE POSITION OF THE POLE LINES, CONDUITS, WATERMAIN, SEWER AND OTHER UNDERGROUND AND ABOVE-GROUND UTILITIES AND STRUCTURES IS NOT NECESSARILY SHOWN ON THE CONSTRUCTION DRAWINGS AND WHERE SHOWN, THE ACCURACY OF THE POSITION OF SUCH UTILITIES AND STRUCTURES IS NOT GUARANTEED.
- BEFORE STARTING WORK, THE CONTRACTOR SHALL INFORM HIMSELF OF THE EXACT LOCATION OF SUCH UTILITIES AND STRUCTURES AND SHALL ASSUME ALL LIABILITY FOR DAMAGE TO THEM.
- HYDRO AND BELL POLES ARE TO BE SUPPORTED AS PER THE RESPECTIVE UTILITY REQUIREMENTS.
- ALL MANHOLE FRAMES, CATCH BASIN FRAMES, WATER VALVES AND GAS VALVES TO BE ADJUSTED TO FINISH GRADE.
- ALL PIPE SIZES ARE IN MILLIMETRES UNLESS OTHERWISE NOTED.
- ALL DIMENSIONS ARE IN METRES UNLESS OTHERWISE NOTED.
- HIGH PRIORITY FIBRE OPTIC BELL AND COGECO CABLES ARE PRESENT - USE EXTREME CAUTION.

BASE PLAN	MW
DESIGN	
CHECKED BY	

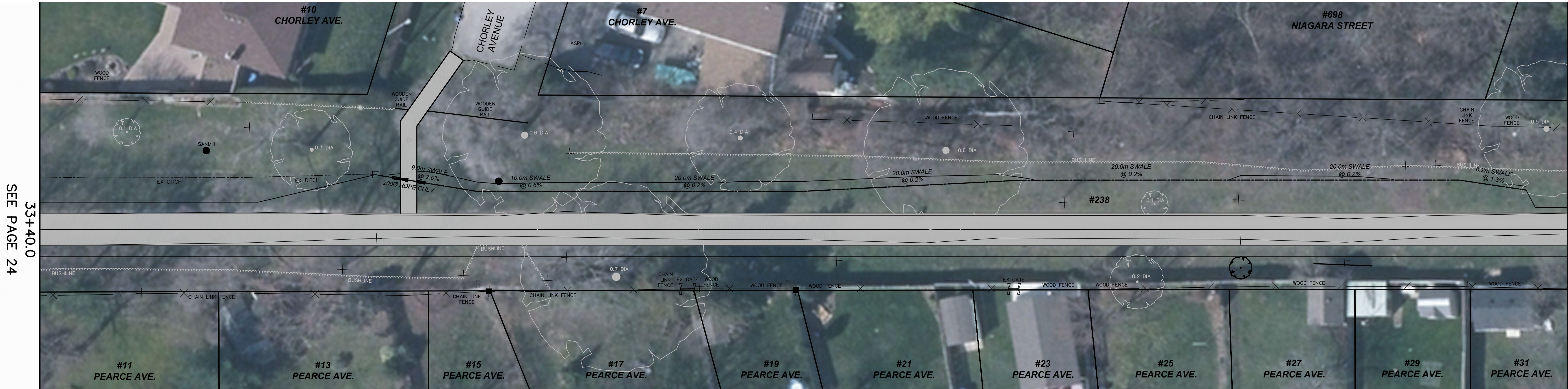
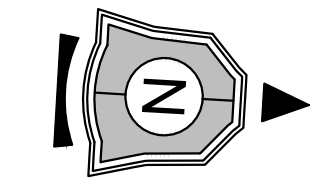
GEODETIC BENCHMARK
No. 9338022
Iron pipe with brass cap
situated on the northeast
corner of Drury Cres. and
Sunmyea Drive, 10.0m north
of centerline Drury Cres.,
9.0m east of centerline
Sunmyea Drive, 2.7m
northeast of street sign,
14.9m south of hydrant.
ELEVATION: 99.908m



GRANTHAM RAIL TRAIL
GRANTHAM
RAIL TRAIL
Plan View
Station 29+20 to 33+40

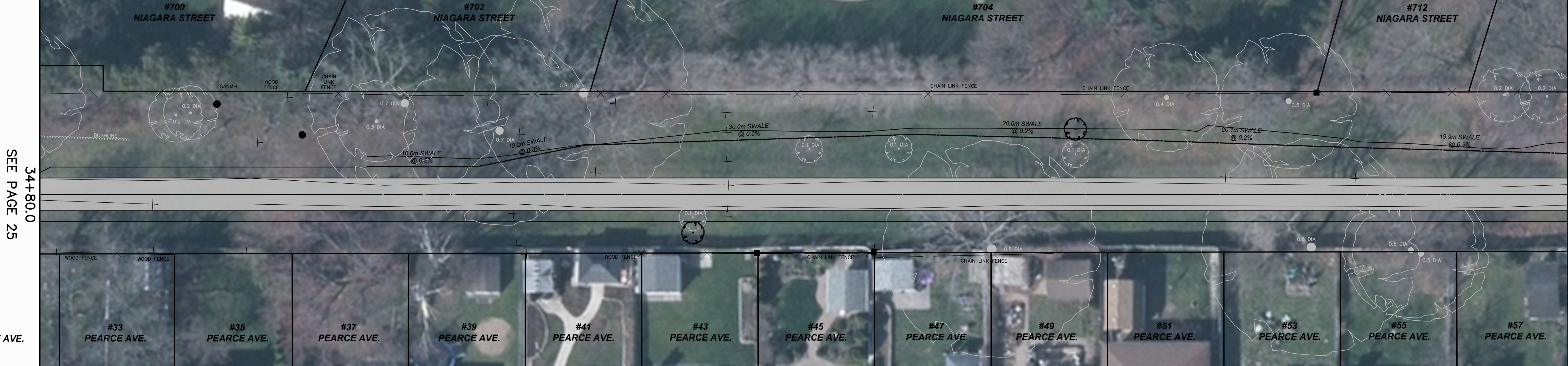
FIELD NOTES	100-
DATE	2022-07-08
SCALE	1:200
DWG.No.	
MUN.REF.No.	
REV.	2

LEGEND	
WV	EX WATER VALVE
HY	EX HYDRANT
CB	EX CATCHBASIN
DCB	EX DOUBLE CATCHBASIN
CBMH	EX CATCHBASIN MANHOLE
SM	EX STORM MANHOLE
SAN	EX SANITARY MANHOLE
HP	EX HYDRO POLE
+	EX LIGHT STANDARD
100.00	EXISTING ELEVATION
700.00	PROPOSED ELEVATION
---	EX WATERMAIN
---	EX STORM SEWER
---	EX SANITARY SEWER
---	EX DITCH
---	PROPOSED DITCH
---	PROP TACTILE WARNING PLATES
---	PROP ROOT PROTECTION LIMITS
---	PROP SIGN LOCATION
---	PROP TREE RELOCATION
---	PROP ASPHALT AREA
---	PROP CONCRETE SIDEWALK
---	PROP ROADWAY ENTRANCE GATE
---	PROP CONCRETE PAD AND BENCH C/W OPTIONAL CENTER ARM INSTALLED
---	PROP CONCRETE PAD AND WASTE RECEPTACLE



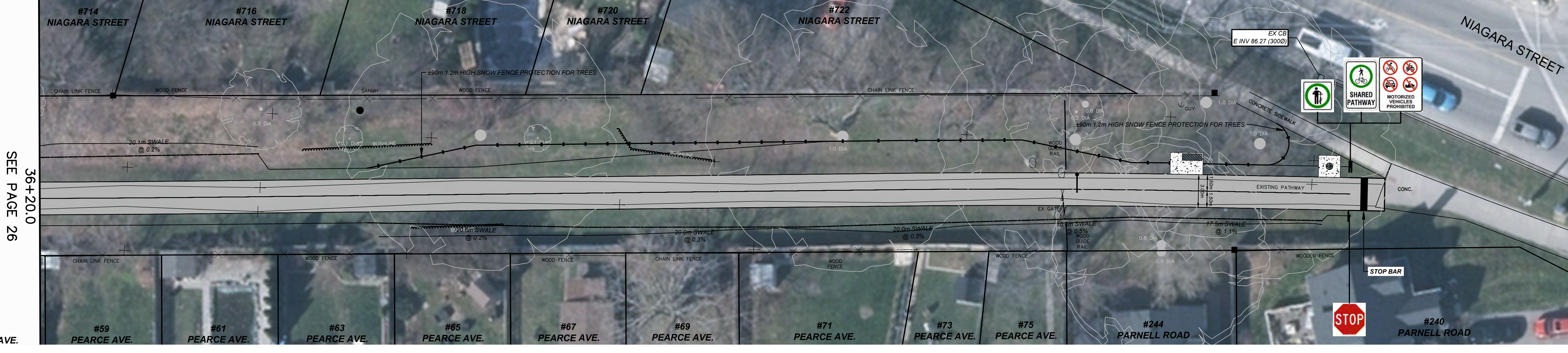
SEE PAGE 24
33+40.0

SEE PAGE 26
34+80.0



SEE PAGE 25
34+80.0

SEE PAGE 27
36+20.0



SEE PAGE 26
36+20.0

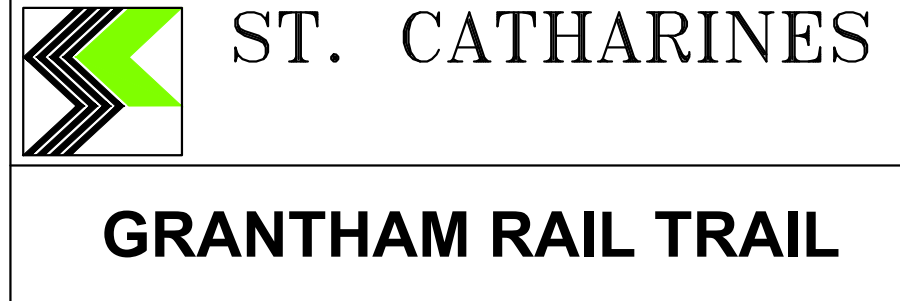
37+40.0

DISCLAIMER:

- THE POSITION OF THE POLE LINES, CONDUITS, WATERMAIN, SEWER AND OTHER UNDERGROUND AND ABOVE-GROUND UTILITIES AND STRUCTURES IS NOT NECESSARILY SHOWN ON THE CONSTRUCTION DRAWINGS AND WHERE SHOWN, THE ACCURACY OF THE POSITION OF SUCH UTILITIES AND STRUCTURES IS NOT GUARANTEED.
- BEFORE STARTING WORK, THE CONTRACTOR SHALL INFORM HIMSELF OF THE EXACT LOCATION OF SUCH UTILITIES AND STRUCTURES AND SHALL ASSUME ALL LIABILITY FOR DAMAGE TO THEM.
- HYDRO AND BELL POLES ARE TO BE SUPPORTED AS PER THE RESPECTIVE UTILITY REQUIREMENTS.
- ALL MANHOLE FRAMES, CATCH BASIN FRAMES, WATER VALVES AND GAS VALVES TO BE ADJUSTED TO FINISH GRADE.
- ALL PIPE SIZES ARE IN MILLIMETRES UNLESS OTHERWISE NOTED.
- ALL DIMENSIONS ARE IN METRES UNLESS OTHERWISE NOTED.
- HIGH PRIORITY FIBRE OPTIC BELL AND COGECO CABLES ARE PRESENT - USE EXTREME CAUTION.

BASE PLAN	MW
DESIGN	
CHECKED BY	

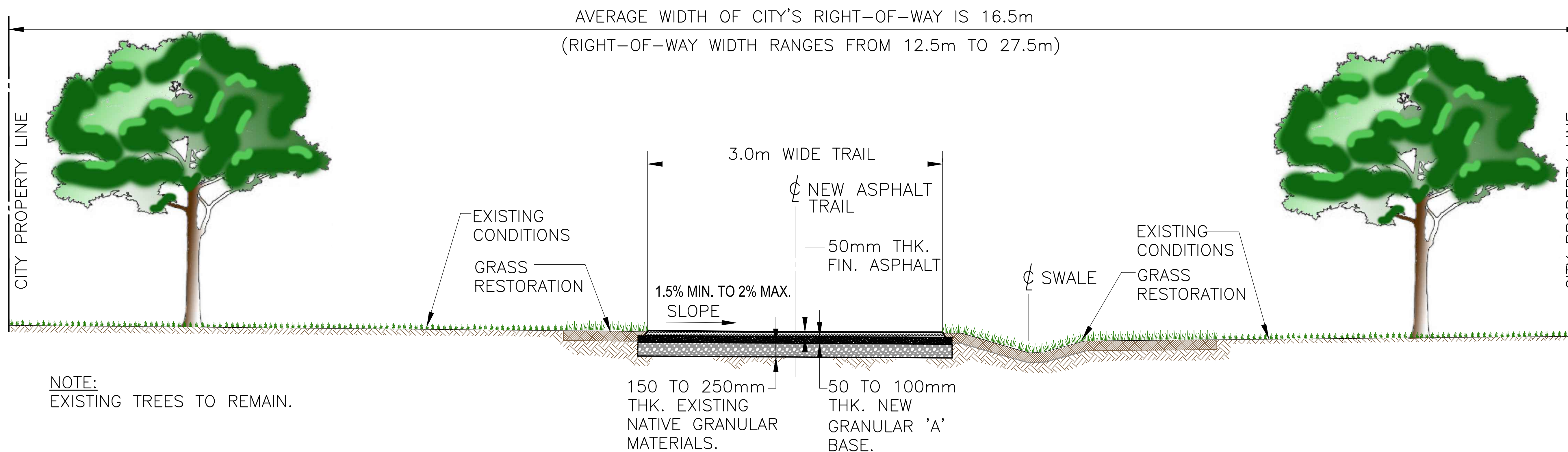
GEODETIC BENCHMARK
No. 9338022
Iron pipe with brass cap
situated on the northeast
corner of Drury Cres. and
Sunnyvale Drive, 10.0m north
of centerline Drury Cres.,
9.0m east of centerline
Sunnyvale Drive, 2.7m
northeast of street sign,
14.9m south of hydrant.
ELEVATION: 99.908m



GRANTHAM RAIL TRAIL
GRANTHAM RAIL TRAIL
Plan View
Station 33+40 to 37+40

FIELD NOTES	100-
DATE	2022-07-08
SCALE	1:200
DWG.No.	
MUN.REF.No.	REV. 2

NO.	REVISION	DATE	INIT.
2	ISSUED FOR REVIEW (90%)	2022-07-08	MW
1	ISSUED FOR REVIEW (60%)	2022-06-17	MW
0	ISSUED FOR REVIEW (30%)	2022-05-25	MW



TYPICAL CROSS SECTION OF THE NEW GRANTHAM RAIL TRAIL IMPROVEMENTS PAVED MULTI-USE PATHWAY

DISCLAIMER:

1. THE POSITION OF THE POLE LINES, CONDUITS, WATERMAIN, SEWER AND OTHER UNDERGROUND AND ABOVE-GROUND UTILITIES AND STRUCTURES IS NOT NECESSARILY SHOWN ON THE CONSTRUCTION DRAWINGS AND WHERE SHOWN, THE ACCURACY OF THE POSITION OF SUCH UTILITIES AND STRUCTURES IS NOT GUARANTEED.

2. BEFORE STARTING WORK, THE CONTRACTOR SHALL INFORM HIMSELF OF THE EXACT LOCATION OF SUCH UTILITIES AND STRUCTURES AND SHALL ASSUME ALL LIABILITY FOR DAMAGE TO THEM.

3. HYDRO AND BELL POLES ARE TO BE SUPPORTED AS PER THE RESPECTIVE UTILITY REQUIREMENTS.

4. ALL MANHOLE FRAMES, CATCH BASIN FRAMES, WATER VALVES AND GAS VALVES TO BE ADJUSTED TO FINISH GRADE.

5. ALL PIPE SIZES ARE IN MILLIMETRES UNLESS OTHERWISE NOTED.

6. ALL DIMENSIONS ARE IN METRES UNLESS OTHERWISE NOTED.

7. HIGH PRIORITY FIBRE OPTIC BELL AND COGECO CABLES ARE PRESENT - USE EXTREME CAUTION.

BASE PLAN	MW
DESIGN	
CHECKED BY	

GEODETIC BENCHMARK
No. 9338022
Iron pipe with brass cap
situated on the northeast
corner of Drury Cres. and
Sunjaya Drive, 10.0m north
of centerline Drury Cres.,
9.0m east of centerline
Sunjaya Drive, 2.7m
northeast of street sign,
14.9m south of hydrant.
ELEVATION: 99.908m



ST. CATHARINES

GRANTHAM RAIL TRAIL

GRANTHAM RAIL TRAIL
GRANTHAM
RAIL TRAIL

TYPICAL CROSS SECTION

FIELD NOTES	100-
DATE	2022-07-08
SCALE	N.T.S.
DWG.No.	
MUN. REF.No.	
REV.	2

NO.	REVISION	DATE	INIT.
2	ISSUED FOR REVIEW (90%)	2022-07-08	MW
1	ISSUED FOR REVIEW (60%)	2022-06-17	MW
0	ISSUED FOR REVIEW (30%)	2022-05-25	MW